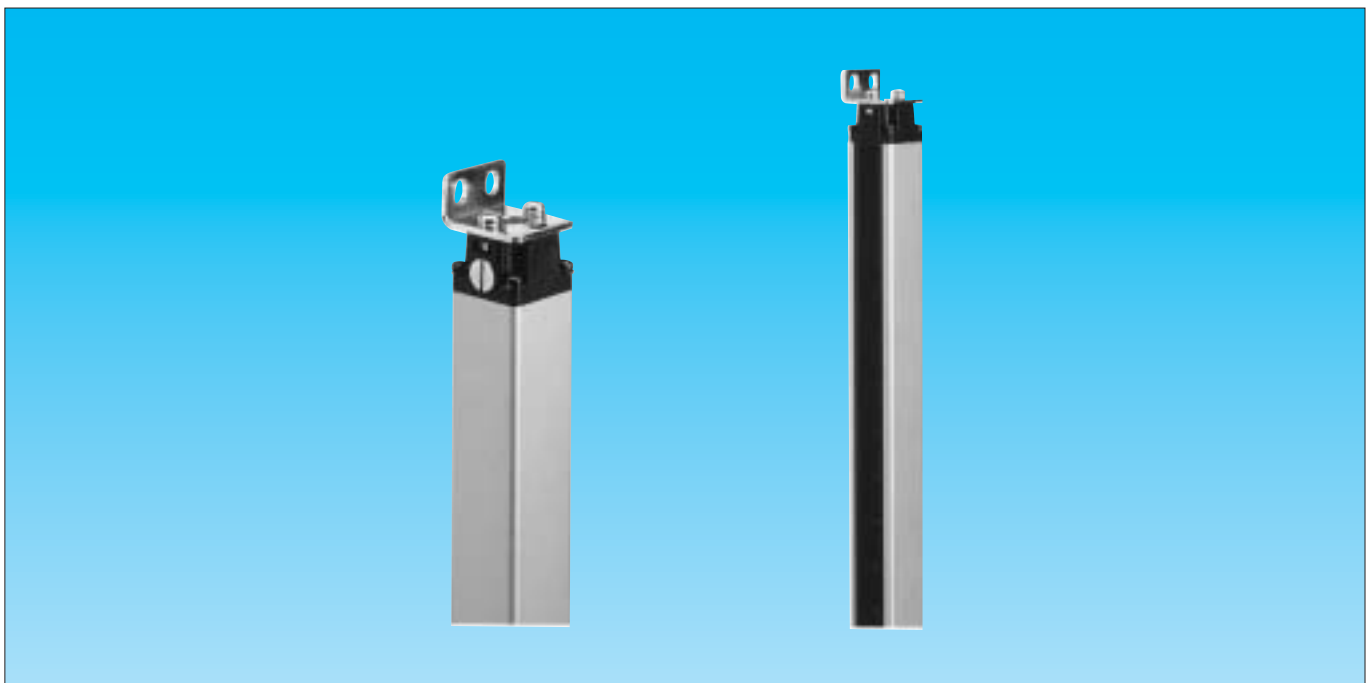


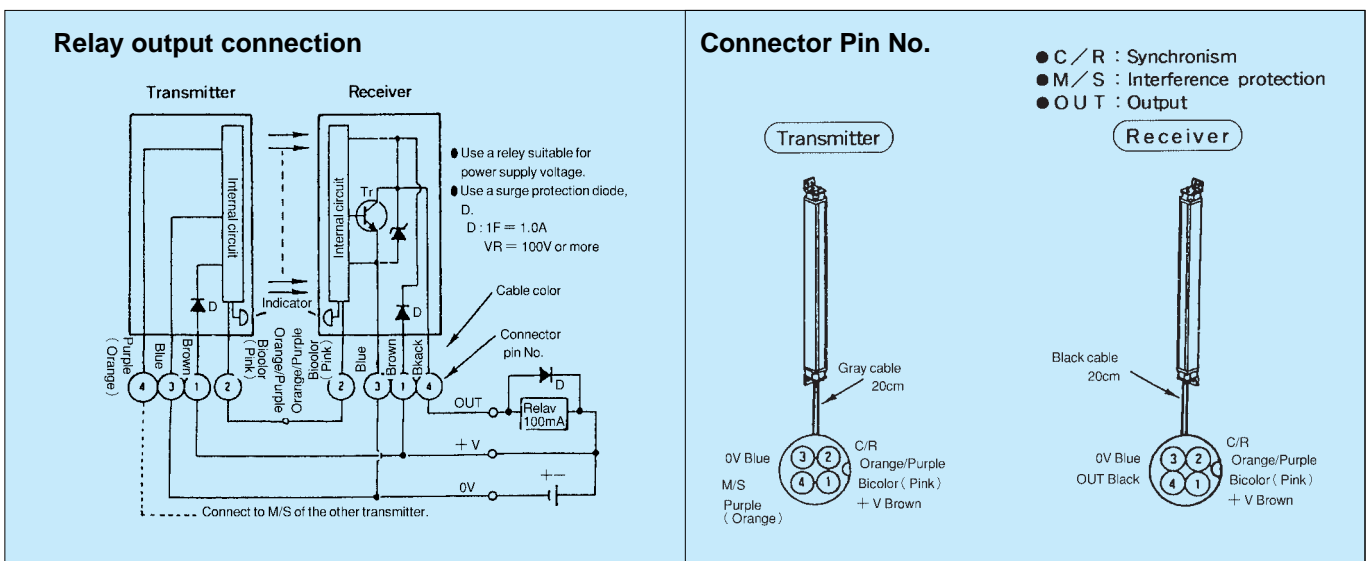
# SS20/SS40 series

LIGHT CURTAIN SENSORS

- Optical axis pitch 20mm/40mm
- Anti mutual interference circuit built in for parallel installation (M/S changeover operation).
- The longest range for its class of 7m is now available.



## OUTPUT CIRCUIT



## SPECIFICATIONS

Model	SS20-T8	SS20-T12	SS20-T16	SS20-T20	SS20-T24	SS20-T32	SS20-T40	SS20-T48	SS40-T4	SS40-T6	SS40-T8	SS40-T10	SS40-T12	SS40-T16	SS40-T20	SS40-T24	
Transmitter	SS20-TL8	SS20-TL12	SS20-TL16	SS20-TL20	SS20-TL24	SS20-TL32	SS20-TL40	SS20-TL48	SS40-TL4	SS40-TL6	SS40-TL8	SS40-TL10	SS40-TL12	SS40-TL16	SS40-TL20	SS40-TL24	
Receiver	SS20-TR8	SS20-TR12	SS20-TR16	SS20-TR20	SS20-TR24	SS20-TR32	SS20-TR40	SS20-TR48	SS40-TR4	SS40-TR6	SS40-TR8	SS40-TR10	SS40-TR12	SS40-TR16	SS40-TR20	SS40-TR24	
Detection	Through-beam																
Range	7m( Max. )																
Object resolution	32mm( Min ) Opaque object( Refer to the chart below right )								52mm( Min ) Opaque object( Refer to the chart below right )								
No. of optical axis	8	12	16	20	24	32	40	48	4	6	8	10	12	16	20	24	
Detecting width	140mm	220mm	300mm	380mm	460mm	620mm	780mm	940mm	120mm	200mm	280mm	360mm	440mm	600mm	760mm	920mm	
Optical axis pitch	20mm								40mm								
Power supply	12V - 24V DC $\pm$ 10%, Ripple 10%( Max. )																
Current consumption( Max. )	70mA	80mA	90mA	100mA	110mA	130mA	150mA	170mA	50mA	55mA	60mA	65mA	70mA	80mA	90mA	100mA	
Output mode	NPN Open collector								NPN Open Collector( 1 ) Sink current 100mA, 30VDC( Max. )								
Rating	Current output : Sink current 100mA, DC30V( Max. )																
Operating mode	A/O Operation, M/S( For preventing interference when installing in parallel. )( Built-in the selectable switch )																
Response time	15msec( Max. )								7msec( Max. )								
Light source	Infrared LED, Wave-length 950nm																
Sensing cell	Photo-transistor																
LED indicator	Transmitter : M/S indicator( Red LED ), Power indicator( Green LED ) Receiver : Stability indicator( Green LED ), Operation indicator( Red LED )																
Incidental Function	Built-in Output short circuit protection, discontinuity of transfer line protection and function preventing interference when installing in parallel.																
Switch	Trns. : Built-in M/S operation selectable switch( M side...Master operation. S side...Sleeve operation )..Lid on the back side Rcvr. : Built-in A/O operation selectable switch( A side...ON operation when all light axis lights on. O side...ON operation when one light axis lights on )..Lid on the back side																
Material	Case : Aluminum, Front cover and Lens : Acrylic																
Connection	Connector 0.5sq $\times$ 4, Outer dia. 6.8. 0.2m length. With 4 pins in the connector( 1 )																
Weight ( Max. )	Trns.	250g	300g	350g	400g	450g	600g	700g	800g	250g	300g	350g	400g	450g	550g	650g	750g
	Rcvr.	250g	300g	350g	400g	450g	600g	700g	800g	250g	300g	350g	400g	450g	550g	650g	750g

- ( 1 ) All models has a PNP output type.  
 ( ) The connector cord ( 5m ) is attached with transmitter and receiver.  
 ( ) Available for 14,18,22 optical axis types.

## ENVIRONMENT

Ambient light	Withstands 9,000 lx
Operating temp.	- 25 ~ + 55
Humidity	35 ~ 85% RH
Vibration	10Hz ~ 55Hz, 1.5mm Amplitude 2Hr., 3 Directions
Case protection	IP66 ( IEC )

