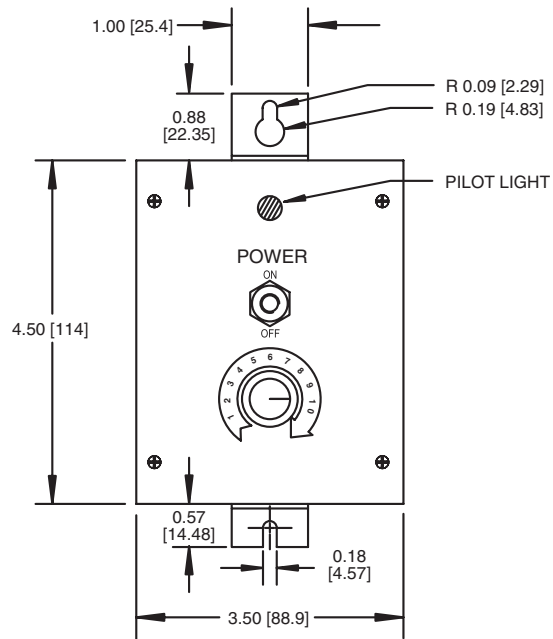


SPECIFICATIONS

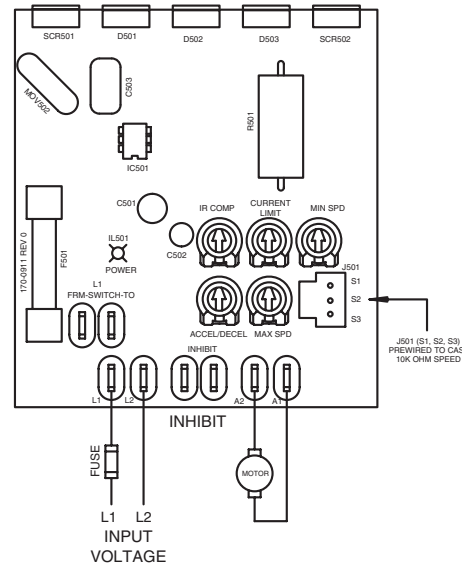
AC Line Voltage	115 VAC, single phase
Horsepower Range with 115 VAC applied *	.1/8 - 1/2 HP
Maximum Armature Current *	.5 ADC
Form Factor	1.37 at base speed
Analog Input Voltage Range	
(signal must be isolated; S1 to S2):	0 - 4 VDC
Input Impedance (S1 to S2)	.200K ohms
Load Regulation	.1% base speed or better

* Double maximum armature current and horsepower when drive is mounted on heatsink part number 223-0159.

DIMENSIONAL DIAGRAM



WIRING DIAGRAM



POWER INPUT

Connect the AC line power to terminals L1 and L2.

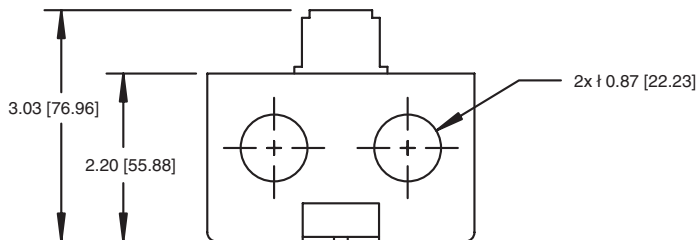
LINE FUSE

EC2 drives require an external fuse for protection. Use fast acting fuses rated for 250 VAC or higher, and approximately 150% of the maximum armature current. Fuse only the HOT line, connected to L1 and leave L2 unfused.

INHIBIT HEADER

Short the INHIBIT pins to coast the motor to stop. Open the INHIBIT terminals to accelerate the motor to set speed.

Twist the inhibit wires and separate them from power-carrying wires or sources of electrical noise. Use shielded cable if the inhibit wires are longer than 18 inches (46 cm). If shielded cable is used, ground only one end of the shield to earth ground. Do not ground both sides of the shield.



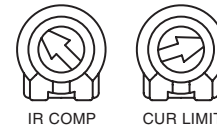
901 East Thompson Avenue, Glendale, CA 91201-2011;
Phone: (800) MINARIK (646-2745); Fax: (800) 394-6334

Document Number 250-0361, Revision 0; Printed in the U.S.A. - November 2002

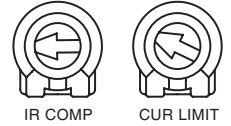
Copyright 2002 by Minarik Corporation - All rights reserved. No part of this manual may be reproduced or transmitted in any form without written permission from Minarik Corporation. The information and technical data in this manual are subject to change without notice. Minarik Corporation and its Divisions make no warranty of any kind with respect to this material, including, but not limited to, the implied warranties of its merchantability and fitness for a given purpose. Minarik Corporation and its Divisions assume no responsibility for any errors that may appear in this manual and make no commitment to update or to keep current the information in this manual. MVD111902

APPROXIMATE CALIBRATION SETTINGS

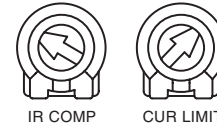
1 HP
90 VDC
1750 RPM
10 AMPS



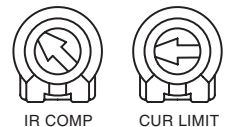
1/4 HP
90 VDC
1750 RPM
2.7 AMPS



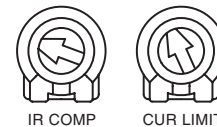
3/4 HP
90 VDC
1750 RPM
7.5 AMPS



1/8 HP
90 VDC
1750 RPM
1.3 AMPS



1/2 HP
90 VDC
1740 RPM
5 AMPS



NOTE
Current limit settings
are set to 150% of
nameplate rating.