

Quick shipment is standard on all LEESON BRAVO® stock and modified stock gear reducers. A wide range of mounting styles are offered and are listed on the accompanying chart. Start with one of the stock reducer styles shown—add an accessory—and create a new mounting style.

**STYLE T, U OR J
HORIZONTAL
BASE**



**MOTORIZED
C FLANGE
QUILL INPUT**



(Style BMQ Shown)

| Type | Stock Reducer Style | T Base Worm Over | U Base Worm Under | J Base Vertical Input |
|--|---------------------|------------------|-------------------|-----------------------|
| Single Reduction Solid Shaft | BMQ | TMQ | UMQ* | JMQ |
| Single Reduction Hollow Shaft | HMQ | THMQ | UHMQ* | JHMQ |
| Double Reduction Worm/Worm Solid Shaft | DMQ | DTMQ | DUMQ* | DJMQ |
| Double Reduction Worm/Worm Hollow Shaft | DHMQ | DTHMQ | DUHMQ* | DJHMQ |
| Double Reduction Helical/Worm Solid Shaft | DXMQ | DXTMQ | DXUMQ* | DXJMQ |
| Double Reduction Helical/Worm Hollow Shaft | DXHMQ | DXTHMQ | DXUHMQ* | DXJHMQ |
| Single Reduction Solid Shaft | B | T | U* | J |
| Single Reduction Hollow Shaft | H | TH | UH* | JH |
| Double Reduction Worm/Worm Solid Shaft | D | DT | DU* | DJ |
| Double Reduction Worm/Worm Hollow Shaft | DH | DTH | DUH* | DJH |
| Double Reduction Helical/Worm Solid Shaft | DX | DXT | DXU* | DXJ |
| Double Reduction Helical/Worm Hollow Shaft | DXH | DXTH | DXUH* | DXJH |

NON-FLANGED



(Style B Shown)

* Not a recommended mounting style. Consult LEESON for selection assistance.

**STYLE F
OUTPUT
FLANGE**



**STYLE FL
OUTPUT
FLANGE**



**STYLE R
REACTION
ARM**



**Free Mod-Squad™
Service
Or Assemble It
Yourself!**



Any of the modified stock gear reducers shown are available on a quick-shipment basis, factory assembled by the **LEESON Gear Mod-Squad**—at no charge for the labor! Just pay for the accessory item. To order, specify the stock reducer and the Gear Mod-Squad Service Number (see below).

Or **assemble it yourself** by ordering the appropriate stock reducer and accessory kit (see below).

Before ordering, check the dimensional information available in this catalog.

More LEESON BRAVO® accessories, options and assembly services are available. See next page.

| F SHORT OUTPUT FLANGE | FL LONG OUTPUT FLANGE | R REACTION ARM Shaft |
|-----------------------------|-----------------------------|----------------------------|
| FMQ | FLMQ | RMQ |
| FHMQ | FLHMQ | RHMQ |
| DFMQ | DFLMQ | DRMQ |
| DFHMQ | DFLHMQ | DRHMQ |
| DXFMQ | DXFLMQ | DXRMQ |
| DXFHMQ | DXFLHMQ | DXRHMQ |
| F | FL | R |
| FH | FLH | RH |
| DF | DFL | DR |
| DFH | DFLH | DRH |
| DXF | DXFL | DXR |
| DXFH | DXFLH | DXRH |

Ordering Information

Style T, U or J - Horizontal Base

| Series | Accessory Kit Only Catalog No. | Mod-Squad™ Service Number | | | Weight (lbs) |
|--------|--------------------------------|---------------------------|---------|---------|--------------|
| | | Style T | Style U | Style J | |
| 512 | G175231 | T512 | U512 | J512 | 2 |
| 518 | G175205 | T518 | U518 | J518 | 2 |
| 520 | G175206 | T520 | U520 | J520 | 2 |
| 525 | G175207 | T525 | U525 | J525 | 3 |
| 534 | G175208 | T534 | U534 | J534 | 5 |

Style F - Short Output Flange

| Series | Accessory Kit Only Catalog No. | Mod-Squad™ Service Number | Weight (lbs) |
|--------|--------------------------------|---------------------------|--------------|
| | | Style F | |
| 512 | G175232 | F512 | 1 |
| 518 | G175209 | F518 | 1 |
| 520 | G175210 | F520 | 1 |
| 525 | G175211 | F525 | 2 |
| 534 | G175212 | F534 | 3 |

Style FL - Long Output Flange

| Series | Accessory Kit Only Catalog No. | Mod-Squad™ Service Number | Weight (lbs) |
|--------|--------------------------------|---------------------------|--------------|
| | | Style FL | |
| 512 | G175233 | FL512 | 1 |
| 518 | G175213 | FL518 | 2 |
| 520 | G175214 | FL520 | 2 |
| 525 | G175215 | FL525 | 3 |
| 534 | G175216 | FL534 | 5 |

Style R - Reaction Arm

| Series | Accessory Kit Only Catalog No. | Mod-Squad™ Service Number | Weight (lbs) |
|--------|--------------------------------|---------------------------|--------------|
| | | Style R | |
| 512 | G175234 | R512 | 1 |
| 518 | G175201 | R518 | 1 |
| 520 | G175202 | R520 | 1 |
| 525 | G175203 | R525 | 2 |
| 534 | G175204 | R534 | 3 |

Refer to page 146 for reaction arm dimensions.

Bravo®
Accessory Kits

SOLID OUTPUT SHAFT Accessory Kits



SINGLE EXTENSION INCH DIMENSIONS*

| Series | Accessory Kit Only Catalog No. | Weight (lbs) |
|--------|--------------------------------|--------------|
| 512 | CONTACT LEESON | |
| 518 | G175236 | 2 |
| 520 | G175237 | 3 |
| 525 | G175521 | 3 |
| 534 | G175238 | 6 |

* Shaft dimensions are in inches. These shafts will only fit into reducers with inch dimensioned output bores.

SINGLE EXTENSION METRIC DIMENSIONS†

| Series | Accessory Kit Only Catalog No. | Weight (lbs) |
|--------|--------------------------------|--------------|
| 512 | G175240 | 2 |
| 518 | G175241 | 2 |
| 520 | G175242 | 3 |
| 525 | G175243 | 3 |
| 534 | G175244 | 6 |

† Shaft dimensions are in millimeters. These shafts will only fit into reducers with metric dimensioned output bores.

DOUBLE EXTENSION INCH DIMENSIONS*

| Series | Accessory Kit Only Catalog No. | Weight (lbs) |
|--------|--------------------------------|--------------|
| 512 | CONTACT LEESON | |
| 518 | G175221 | 3 |
| 520 | G175222 | 4 |
| 525 | G175223 | 4 |
| 534 | G175224 | 7 |

* Shaft dimensions are in inches. These shafts will only fit into reducers with inch dimensioned output bores.

DOUBLE EXTENSION METRIC DIMENSIONS†

| Series | Accessory Kit Only Catalog No. | Weight (lbs) |
|--------|--------------------------------|--------------|
| 512 | G175245 | 3 |
| 518 | G175246 | 3 |
| 520 | G175247 | 4 |
| 525 | G175248 | 4 |
| 534 | G175249 | 7 |

† Shaft dimensions are in millimeters. These shafts will only fit into reducers with metric dimensioned output bores.

Motorized C-Face Quill Input Bushing Kits

NEMA Bushing Kits ◊ - Inches

| Frame Conversion | Input Quill Bore Size (Inch) | Accessory Kit Only Catalog No. | Weight (lbs) |
|------------------|------------------------------|--------------------------------|--------------|
| 180TC to 140TC | 1-1/8 to 7/8 | G175230 | 0.5 |
| 180TC to 56C | 1-1/8 to 5/8 | G175229 | 0.4 |
| 140TC to 56C | 7/8 to 5/8 | G175228 | 0.4 |

◊ Bushing reduces the bore size of input quill to accommodate a smaller motor shaft diameter. The application may also require a different input flange size. Bushings are not intended to be used in output bores.

IEC Bushing Kits ◊ - MM

| Frame Conversion | Input Quill Bore Size (mm) | Accessory Kit Only Catalog No. | Weight (lbs) |
|------------------|----------------------------|--------------------------------|--------------|
| D63 to D56 | 11 to 9 | G175259 | 0.4 |
| D71 to D63 | 14 to 11 | G175251 | 0.4 |
| D71 to D56 | 14 to 9 | G175252 | 0.4 |
| D80 to D71 | 19 to 14 | G175253 | 0.4 |
| D80 to D63 | 19 to 11 | G175254 | 0.4 |
| D90 to D80 | 24 to 19 | G175255 | 0.4 |
| D90 to D71 | 24 to 14 | G175256 | 0.4 |
| DF100/112 to D90 | 28 to 24 | G175257 | 0.5 |
| DF100/112 to D80 | 28 to 19 | G175258 | 0.5 |

◊ Bushing reduces the bore size of input quill to accommodate a smaller motor shaft diameter. The application may also require a different input flange size. Bushings are not intended to be used in output bores.

Double Reduction Adapter Kits

| Series | Accessory Kit Only Catalog No. | Primary Unit Size | Secondary Unit Quill Size | Weight (lbs) |
|--------|--------------------------------|-------------------|---------------------------|--------------|
| 518 | G175225 | 518 | 0.625 | 1 |
| 520 | G175225 | 518 | 0.625 | 1 |
| 525 | G175226 | 518 | 0.875 | 1 |
| 534 | G175227 | 518 | 1.125 | 1.5 |

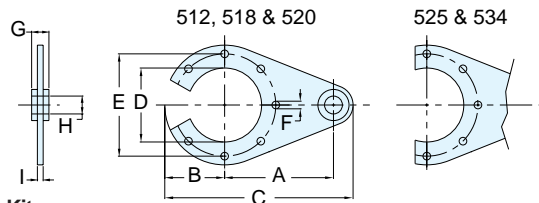
Protection Cap Accessory Kits Ω

| Series | Accessory Kit Only Catalog No. | Weight (lbs) |
|--------|--------------------------------|--------------|
| 512 | G175250 | 0.3 |
| 518 | G175217 | 0.3 |
| 520 | G175218 | 0.3 |
| 525 | G175219 | 0.4 |
| 534 | G175220 | 0.6 |



Ω This protective cap covers the unused output bore for single extension assemblies. Check OSHA requirements and review installation manual to assure all safety requirements of gear reducer installation are met.

Style R Reaction Arm Dimensions



Style R - Reaction Arm Kits

| Series | A | B | C | D | E | F | G | H | I |
|--------|------|------|-------|------|------|------|------|------|------|
| 512 | 3.94 | 1.57 | 6.22 | 1.97 | 2.56 | 0.28 | 0.16 | 0.31 | 0.16 |
| 518 | 3.94 | 1.77 | 6.22 | 1.97 | 2.56 | 0.28 | 0.16 | 0.31 | 0.16 |
| 520 | 3.94 | 2.17 | 6.81 | 2.68 | 3.70 | 0.28 | 0.16 | 0.31 | 0.16 |
| 525 | 5.91 | 2.17 | 9.25 | 2.95 | 3.54 | 0.35 | 0.79 | 0.39 | 0.24 |
| 534 | 7.87 | 3.15 | 12.60 | 4.33 | 5.12 | 0.43 | 0.98 | 0.79 | 0.24 |

Refer to page 145 for accessory kits available.