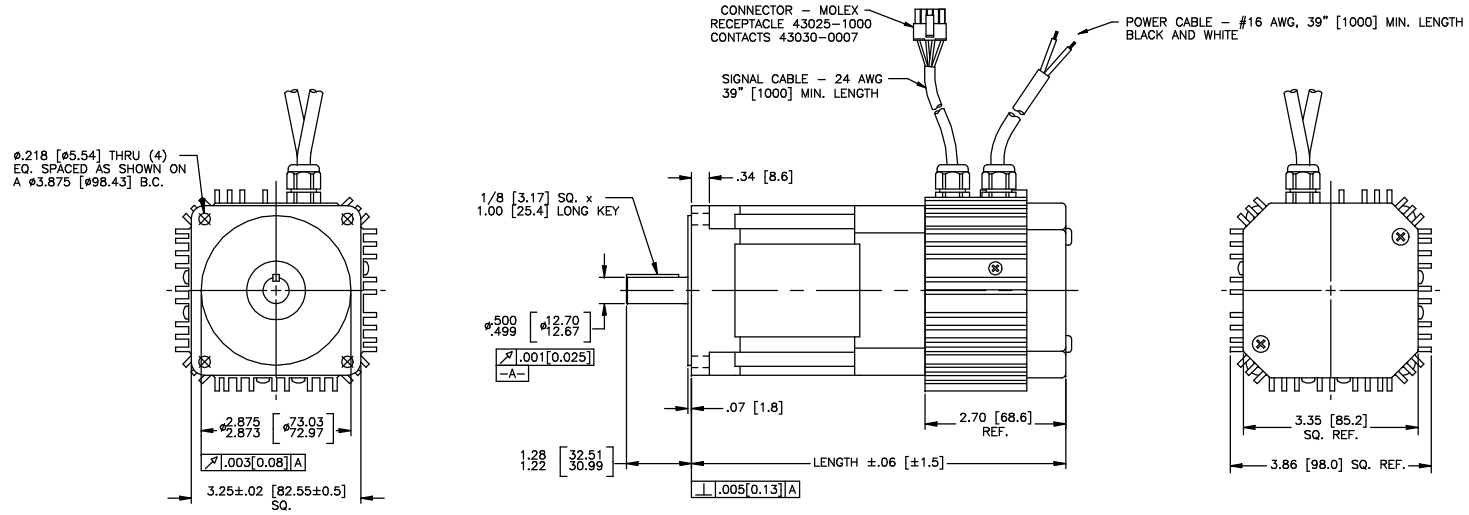
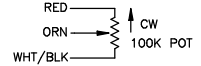


PART NUMBER	INPUT VOLTAGE	INPUT CURRENT AMPS	UNDER VOLTAGE LOCKOUT	SPEED RPM	OUTPUT WATTS	ACTUAL HP	APPROX. HP	TORQUE		MOTOR INERTIA		WEIGHT		LENGTH	
								LB-IN	Nm	LB-IN-SEC ²	Kg-cm ²	LB	Kg	IN	MM
MA34132	120 VAC	2	95 VAC	1750	168	0.22	1/5	8.10	0.915254	0.00088	0.99352	6.1	2.77	6.18	157.0
MA34232	120 VAC	4	95 VAC	3450	331	0.44	1/3	8.10	0.915254	0.00088	0.99352	6.1	2.77	6.18	157.0
MA34134	120 VAC	8	95 VAC	1750	278	0.37	1/3	13.40	1.514124	0.00144	1.62576	8.4	3.81	7.18	182.4

REVISIONS			
REV	DESCRIPTION	DATE	APPD
P1	PRELIMINARY	9-27-06	
P2	PRELIMINARY	10-3-06	
P3	PRELIMINARY	10-18-06	



- NOTES:
- FOR FIXED NOMINAL SPEED OPERATION, PERMANENTLY SHORT RED AND ORANGE WIRES.
 - FOR ADJUSTABLE SPEED:



- TO CHANGE DIRECTION, CONNECT GREEN TO BLACK - ONLY WHEN MOTOR IS STOPPED.
- TO MAKE MOTOR RUN, CONNECT YELLOW TO BLACK.



VERY IMPORTANT!
FOR AC POWERED UNITS, ALL SIGNAL LEADS ARE AT HIGH VOLTAGE POTENTIAL RELATIVE TO EARTH AND MOTOR CASE. HANDLE WITH CARE FOR SHOCK HAZARD AND DO NOT ALLOW TO COME IN CONTACT WITH EARTH, MOTOR CASE, OR ANY OTHER VOLTAGE AS DAMAGE WILL OCCUR.

THIS DRAWING AND THE INFORMATION DISCLOSED HEREIN ARE PROPRIETARY DATA OF MOTION CONTROL GROUP AND IS TO BE IMMEDIATELY RETURNED UPON REQUEST. REPRODUCTION OF THIS DRAWING OR THE INFORMATION CONTAINED HEREIN IS PROHIBITED WITHOUT THE EXPRESSED WRITTEN APPROVAL OF MCG.

PIN	WIRE COLOR	FUNCTION
1	RED	POT +
2	BLACK	SIGNAL COMMON
3	WHT/BLK	POT -
4	ORANGE	Vc
5	YELLOW	INHIBIT/ENABLE
6	GREEN	DIRECTION
7	BLUE	/RESET
8	WHITE	FAULT/READY
9	BROWN	SPEED MON.

DIMENSIONS: INCHES [MILLIMETERS]
NOTE: THIS DRAWING HAS BEEN CREATED BY AUTOCAD.
MANUAL REVISIONS ARE NOT ALLOWED.

DESIGNED	DATE	BY
CHECKED		
APPROVED		
MCG MOTION CONTROL GROUP		
TITLE		
BRUSHLESS D.C. MOTOR-DRIVE		
TOLERANCES ON DECIMALS	FRACTIONS 1/64	SIZE NUMBER
XX ±.005	XX ±.010 ANGLES 1/2°	D MA34XXX-120VAC
UNLESS OTHERWISE SPECIFIED DIMENSIONS ARE IN INCHES		SCALE 1:1 SHEET 1 of 1