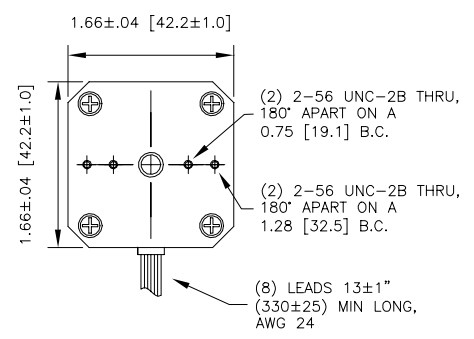
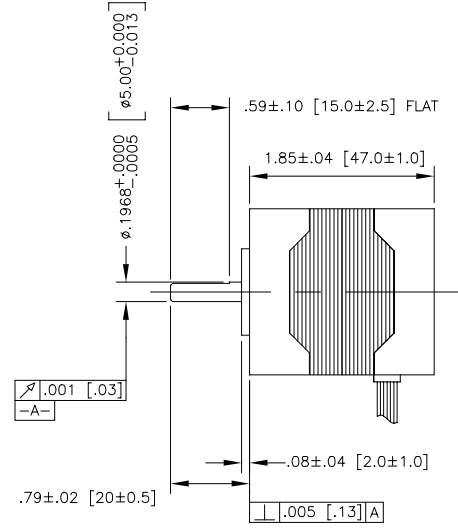
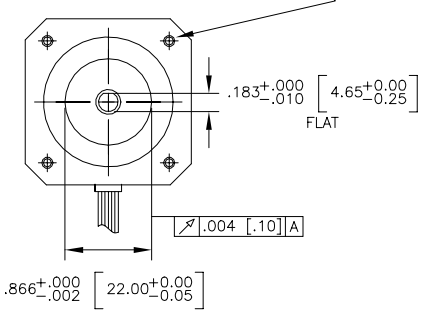
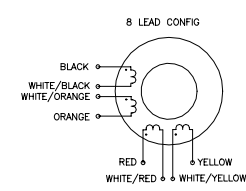


REVISIONS			
REV	DESCRIPTION	DATE	APPD
A	RELEASED ECO# 11621	04-25-02	JPH
B	ECO - 11635	05-30-02	JPH
C	ECO - 11713	10-2-02	JPH

(4) 4-40 UNC-2B X 0.18 [4.5] MIN DEEP, EQ. SPD AS SHOWN ON A Ø1.726±0.010 [43.84±0.25] B.C.



NOTE: MOTOR ROTATION CAN BE REVERSED BY REVERSING EITHER A AND A OR B AND B

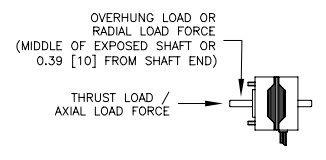


8 LEAD WIRING DIAGRAM								
LEAD WIRE COLOR	BLACK	ORANGE	BLACK	ORANGE	RED	WHITE	RED	YELLOW
PARALLEL CONNECTION	A	A	A	A	B	B	B	B
SERIES CONNECTION	A	COM	B	C	COM	D		
UNIPOLAR DRIVE	A	COM	B	C	COM	D		



WINDING CONFIGURATION	MOTOR PARAMETERS			oz-in [N-cm] (MIN)
	BIPOLAR PARALLEL	BIPOLAR SERIES	UNIPOLAR	
HOLDING TORQUE	62.8 [44.3]	62.8 [44.3]	44.4 [31]	
DETTENT TORQUE	4.0 [2.8]	4.0 [2.8]	4.0 [2.8]	
RATED CURRENT/PHASE	1.13	0.56	0.8	AMPS DC
PHASE RESISTANCE	4.5	18.0	9.0	OHMS (±10%)
PHASE INDUCTANCE	9.5	38.0	9.5	mH (±20%)
VOLTAGE	5.08	10.08	7.20	VOLTS DC
STEP ANGLE	1.8		DEGREES	
ACCURACY	± 5		%	
ROTOR INERTIA	0.0009583 [67.7]			oz-in-s <sup>2</sup> [g-cm <sup>2</sup> ]
WEIGHT	0.73 [0.33]			lb. [kg]
THRUST LOAD	2.25 [1.02]		lb. [kg] MAX	
OVERHUNG LOAD	6.25 [2.84]		lb. [kg] MAX	
INSULATION CLASS	B			
INSULATION RESISTANCE	100			MOHMS @ 500 VDC, 25°C
AMBIENT OPERATE TEMP	(-25) - (40)			DEGREES CELSIUS
MAX MOTOR CASE TEMP	90			DEGREES CELSIUS
MAX POWER DISSIPATION	9.22			WATTS
DIELECTRIC STRENGTH	500			VOLTS AC
MAX BUSS VOLTAGE	40			VOLTS
THERMAL RESISTANCE	7.05			DEGREES CELSIUS / WATT

MAXIMUM WINDING TEMP = 130 DEGREES CELSIUS



NOTE: THIS DRAWING HAS BEEN CREATED BY AUTOCAD. MANUAL REVISIONS ARE NOT ALLOWED.

DRAWN	JPH	
CHECKED		
APPROVED		
TITLE		1.8" STEP MOTOR
TOLERANCES ON DECIMALS - FRACTIONS ±1/64 XX ±0.010 ANGLES ±1/2' XXX ±0.005 UNLESS OTHERWISE SPECIFIED DIMENSION ARE IN INCHES		SIZE NUMBER B IS17020
SCALE 1:1		SHEET 1 of 1

THIS DRAWING AND THE INFORMATION DISCLOSED HEREIN ARE PROPRIETARY DATA OF MOTION CONTROL GROUP AND IS TO BE IMMEDIATELY RETURNED UPON REQUEST. REPRODUCTION OF THIS DRAWING OR THE INFORMATION CONTAINED HEREIN IS PROHIBITED WITHOUT THE EXPRESSED WRITTEN APPROVAL OF MCG.