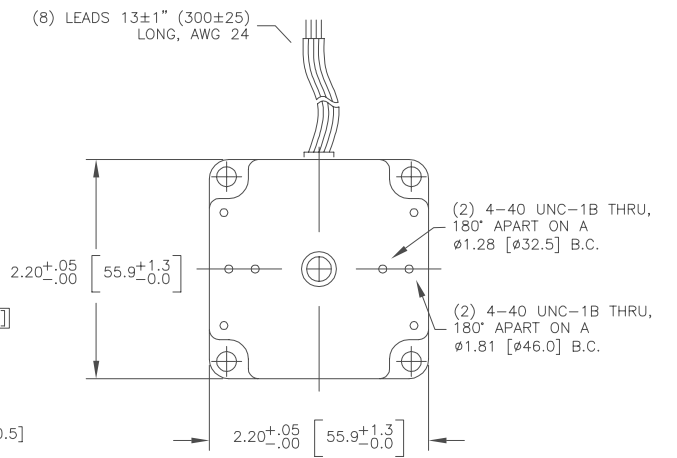
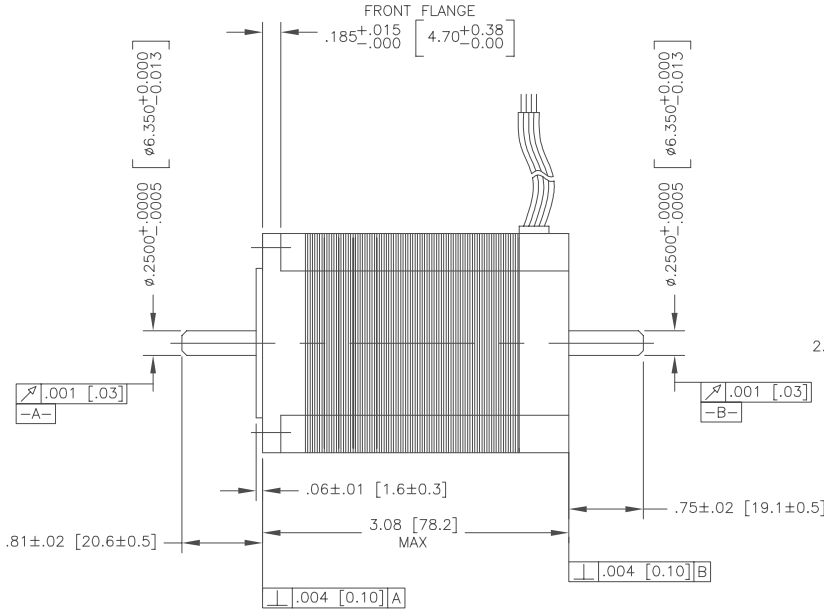
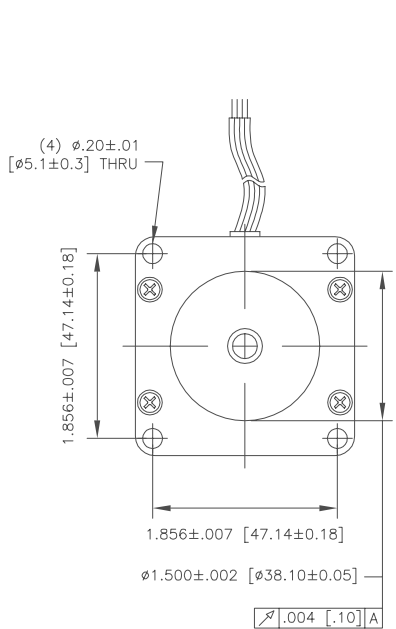
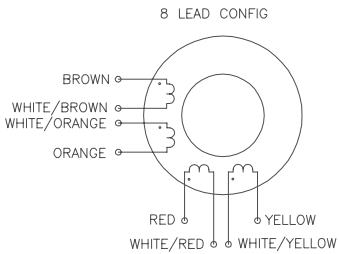


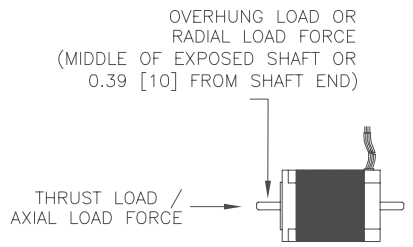
REVISIONS			
REV	DESCRIPTION	DATE	APPD
A	RELEASED (ECO# 11777)	02-12-03	JPH
B	ECO - 11867	8-20-03	GP
C	ECO - 12044	6-17-04	GKH



NOTE: MOTOR ROTATION CAN BE REVERSED BY REVERSING EITHER A AND  $\bar{A}$  OR B AND  $\bar{B}$



MOTOR PARAMETERS			
WINDING CONFIGURATION	BIPOLAR PARALLEL	BIPOLAR SERIES	UNIPOLAR
HOLDING TORQUE	258 [182]	258 [182]	181 [128]
DETENT TORQUE	11 [7.5]	11 [7.5]	11 [7.5]
RATED CURRENT/PHASE	4.20	2.14	3.00
PHASE RESISTANCE	0.55	2.20	1.10
PHASE INDUCTANCE	1.7	6.8	1.7
VOLTAGE	2.31	4.70	3.30
STEP ANGLE	1.8	DEGREES	
ACCURACY	± 5	%	
ROTOR INERTIA	0.0048 [340]	oz-in-s <sup>2</sup> [g-cm <sup>2</sup> ]	
WEIGHT	2.20 [1.0]	lb. [kg]	
THRUST LOAD	3.40 [1.45]	lb. [kg] MAX	
OVERHUNG LOAD	18.00 [8.18]	lb. [kg] MAX	
INSULATION CLASS	B		
INSULATION RESISTANCE	100	MOHMS, @ 500 VDC, 25°C	
AMBIENT OPERATE TEMP	(-25) - (40)	DEGREES CELSIUS	
MAX MOTOR CASE TEMP	90	DEGREES CELSIUS	
MAX POWER DISSIPATION	19.4	WATTS	
DIELECTRIC STRENGTH	500	VOLTS AC	
MAX BUSS VOLTAGE	75	VOLTS	
THERMAL RESISTANCE	3.35	DEGREES CELSIUS / WATT	



8 LEAD WIRING DIAGRAM									
	LEAD WIRE COLOR	BROWN	ORANGE WHITE	BROWN WHITE	ORANGE	RED WHITE	YELLOW WHITE	RED WHITE	YELLOW
BIPOLAR DRIVE	PARRALLEL CONNECTION	A		$\bar{A}$		B		$\bar{B}$	
	SERIES CONNECTION	A	COM	$\bar{A}$	$\bar{A}$	B	COM	$\bar{B}$	$\bar{B}$
UNIPOLAR DRIVE		A	COM	B	C	COM	D		

NOTE: THIS DRAWING HAS BEEN CREATED BY AUTOCAD. MANUAL REVISIONS ARE NOT ALLOWED.

DRAWN JPH  
 CHECKED  
 APPROVED

TITLE: IH 23 014 STEP MOTOR

TOLERANCES ON DECIMALS: FRACTIONS ±1/64, XX ±.010, ANGLES ±1/2°, XXX ±.005  
 UNLESS OTHERWISE SPECIFIED DIMENSION ARE IN INCHES

SIZE: C  
 NUMBER: IH 23 014  
 SCALE: 1:1  
 SHEET: 1 of 1



THIS DRAWING AND THE INFORMATION DISCLOSED HEREIN ARE PROPRIETARY DATA OF MOTION CONTROL GROUP, AND IS TO BE IMMEDIATELY RETURNED UPON REQUEST. REPRODUCTION OF THIS DRAWING OR THE INFORMATION CONTAINED HEREIN IS PROHIBITED WITHOUT THE EXPRESSED WRITTEN APPROVAL OF MCG.

NOTE: MAXIMUM WINDING TEMP = 130 DEGREES CELSIUS