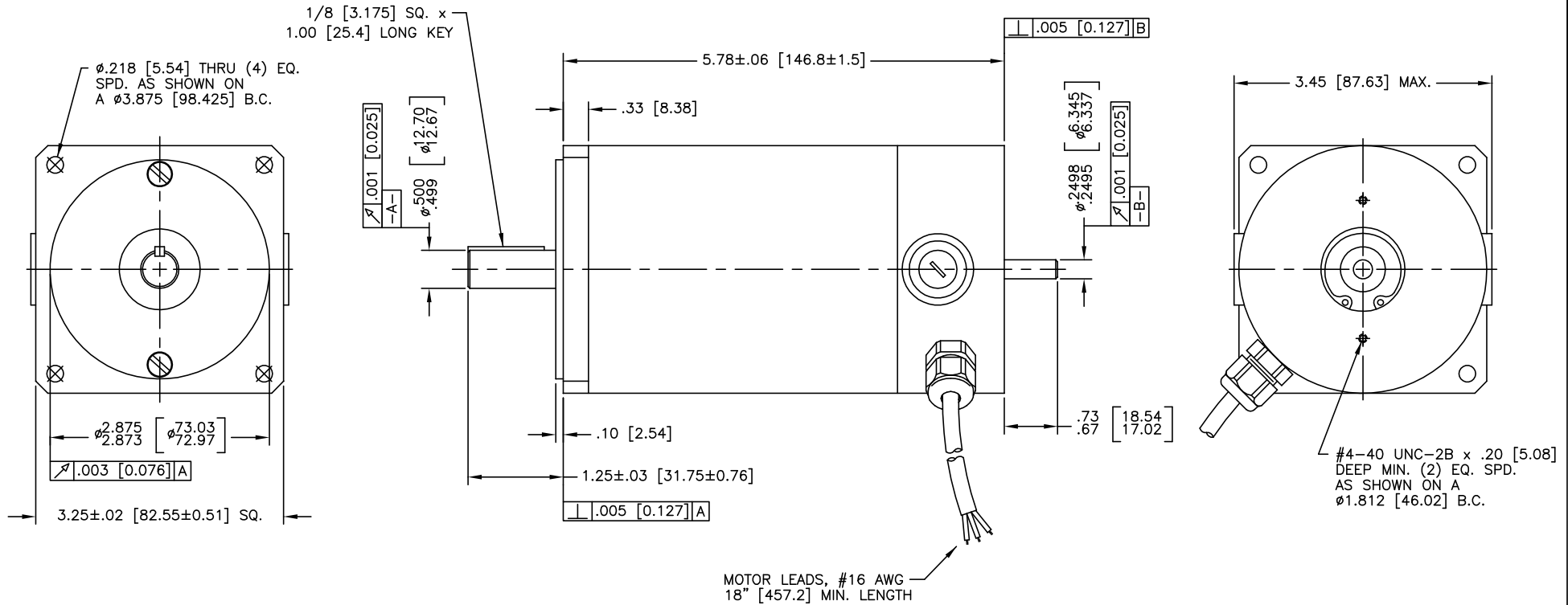


NOTES:  
 1. ROTATION: CLOCKWISE AS VIEWED FROM OUTPUT SHAFT END.

REVISIONS			
REV	DESCRIPTION	DATE	APPD
A	RELEASED - ECO 12043	6-16-04	GKH
B	ECO - 12079	8-24-04	<i>[Signature]</i>
C	ECO - 12140	12-15-04	GKH



MOTOR PARAMETERS @25°C

	TOL.	UNITS	VALUE
MAX. OPERATING SPEED ( $S_n$ )	MAX.	R.P.M.	6000
CONTINUOUS TORQUE ( $T_c$ )	MAX.	OZ-IN	120
PEAK TORQUE ( $T_p$ )	MAX.	OZ-IN	600
TORQUE SENSITIVITY (Kt)	±10%	OZ-IN/AMPS	18.03
BACK EMF CONSTANT ( $K_e$ )	±10%	V/K R.P.M.	13.36
TERMINAL VOLTAGE ( $V_t$ )	MAX.	VDC	90
TERMIANL RESISTANCE ( $R_t$ )	±15%	OHMS	0.82
INDUCTANCE (L)	±15%	mH	2.31
ROTOR INERTIA ( $J_a$ )	NOM.	OZ-IN-SEC <sup>2</sup>	0.033
FRICTION TORQUE ( $T_f$ )	NOM.	OZ-IN	6
DAMPING TORQUE ( $T_d$ )	NOM.	OZ-IN/KRPM	1
WINDING TEMPERATURE	MAX.	°C	155
WEIGHT	NOM.	LBS	7.2

MOTOR CONNECTIONS	
COLOR	FUNCTION
RED	MOTOR +
BLACK	MOTOR -
WHITE	CASE GROUND

DIMENSIONS: INCHES [MILLIMETERS]

NOTE: THIS DRAWING HAS BEEN CREATED BY AUTOCAD. MANUAL REVISIONS ARE NOT ALLOWED.

DRAWN 6-16-04	
CHECKED	
APPROVED 6-16-04	
TITLE D.C. MOTOR	
TOLERANCES ON DECIMALS FRACTIONS ±1/64 XX ±.010 ANGLES ±1/2 XXX ±.005 UNLESS OTHERWISE SPECIFIED DIMENSION ARE IN INCHES	SIZE C
NUMBER ID33005	
SCALE 1:1	SHEET 1 of 1

THIS DRAWING AND THE INFORMATION DISCLOSED HEREIN ARE PROPRIETARY DATA OF MOTION CONTROL GROUP, AND IS TO BE IMMEDIATELY RETURNED UPON REQUEST. REPRODUCTION OF THIS DRAWING OR THE INFORMATION CONTAINED HEREIN IS PROHIBITED WITHOUT THE EXPRESSED WRITTEN APPROVAL OF MCG.