

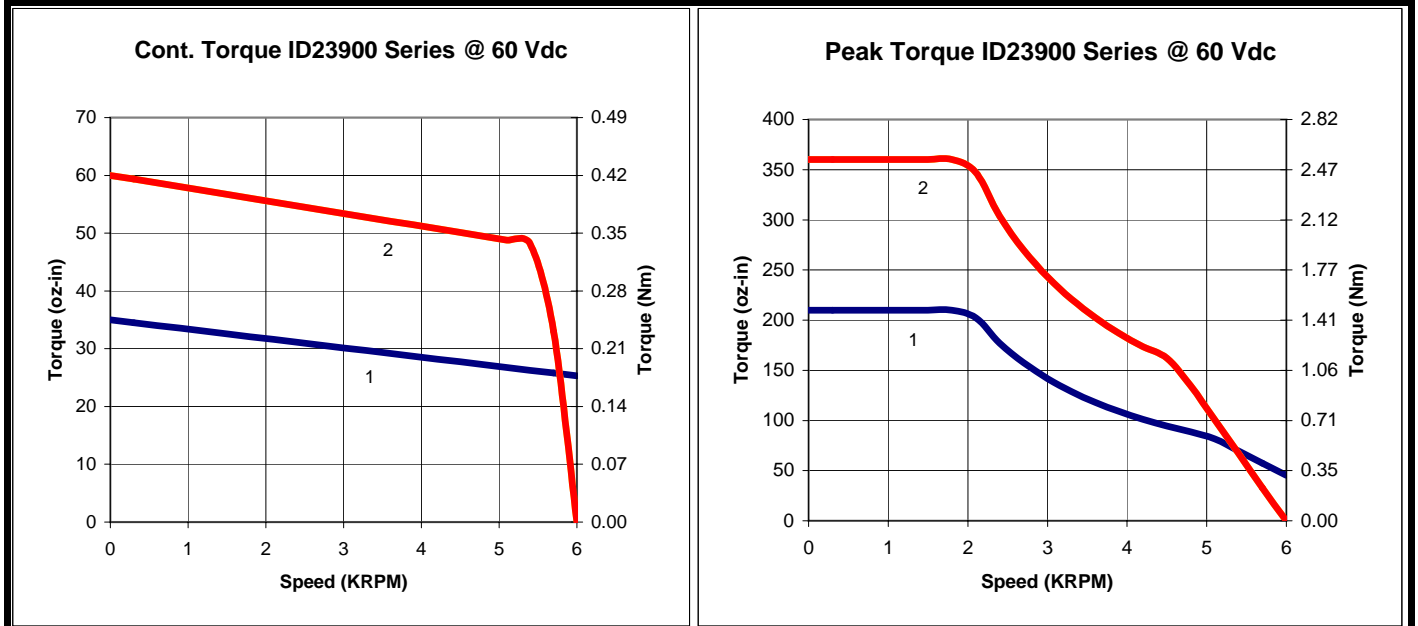
ID23900 DC Brush Motor

- 2.25 Inch NEMA 23 Motor
- Continuous Torque FROM 35 TO 150 oz-in
- Voltage Rating up to 60 Vdc w/ Speeds to 6000 rpm
- 10 Lb Radial Load 1/2" from Front Face
- Motor / Tachometer Versions (shaded), 7 V/Krpm
- Optical Encoders - Economical to High Precision, Optional
- NEMA 23 Low Cost Planetary Gearhead, Optional
- "Bolt On" Brake or Precision Gearhead, Optional



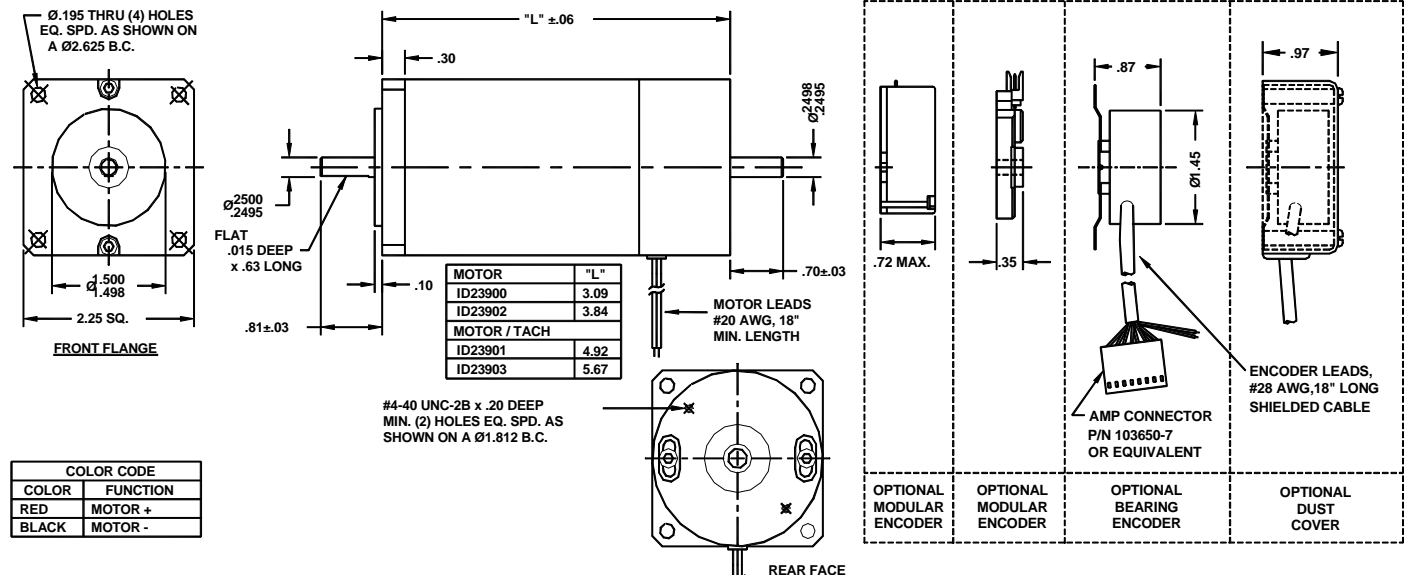
Catalog Number	Torque		Speed @ Vt ω RPM	Voltage Terminal Vt V dc	Current		Torque Constant		Voltage Constant Ke V / KRPM	Res. Rt ohms	Ind. L mH	Inertia		Weight
	Cont. Tcs Nm / oz-in	Peak Tps Nm / oz-in			Cont. Ics A	Peak Ips A	Nm / A	oz-in / A				kg-cm ²	oz-in-s ²	
ID23900	0.247 / 35	1.48 / 210	6000	60	3.5	20.8	0.0792	11.21	8.29	1.383	1.00	0.3178	0.0045	0.91 / 2
ID23901	0.247 / 35	1.48 / 210	6000	60	3.5	20.8	0.0792	11.21	8.29	1.383	1.00	0.3955	0.0056	1.22 / 2.7
ID23902	0.42 / 60	2.54 / 360	5500	60	5.0	29.7	0.0950	13.45	9.95	0.750	0.50	0.6356	0.009	1.59 / 3.5
ID23903	0.42 / 60	2.54 / 360	5500	60	5.0	29.7	0.0950	13.45	9.95	0.750	0.50	0.7133	0.0101	1.9 / 4.2

Notes: 1) 155C winding temp. All others @ 25C. 2) Tolerance on winding constants (+/- 10%), Resistance and Inductance (+/- 15%). 3) Visit www.mcg-net.com for more individual CAD drawings & data



Curves: 1) ID23900 & ID23902 2) ID23901 & ID23903

System Performance may differ depending on the drive capability



COLOR CODE	
COLOR	FUNCTION
RED	MOTOR +
BLACK	MOTOR -

