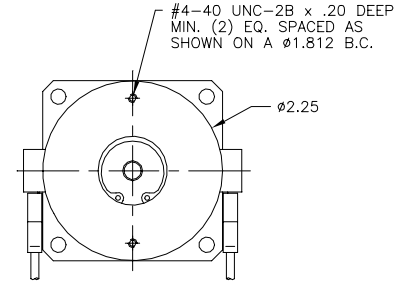
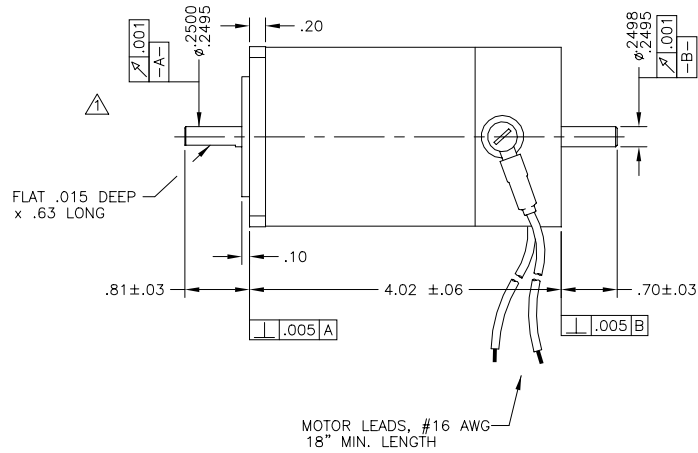
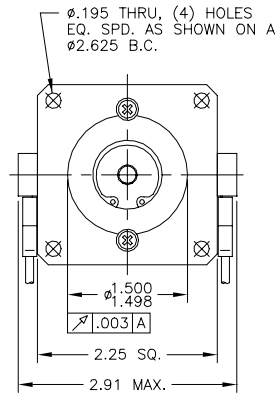


NOTES:

⚠ ROTATION: WITH POSITIVE VOLTAGE APPLIED THE THE RED LEAD, ROTATION SHALL BE CLOCKWISE AS VIEWED FROM OUTPUT SHAFT END.

REVISIONS			
REV	DESCRIPTION	DATE	APPD
P1	PRELIMINARY	11-18-02	



MOTOR PARAMETERS @25°C			
	TOL.	UNITS	VALUE
MAX. OPERATING SPEED (Sn)	MAX.	R.P.M.	6000
TERMINAL VOLTAGE (Vt)	MAX.	V.D.C.	60
CONTINUOUS TORQUE (Tc)	MAX.	OZ-IN	30
PEAK TORQUE (Tp)	MAX.	OZ-IN	240
TORQUE SENSITIVITY (kt)	±10%	OZ-IN/AMPS	7.84
BACK EMF CONSTANT (Ke)	±10%	V/K R.P.M.	5.8
D.C. RESISTANCE (Rt)	±10%	OHMS	1.15
INDUCTANCE (L)	±15%	mH	1.40
ROTOR INERTIA (Ja)	NOM.	OZ-IN-SEC ²	0.0038
WINDING TEMPERATURE	MAX.	°C	155
WEIGHT	NOM.	LBS	2.2

MOTOR CONNECTIONS	
COLOR	FUNCTION
RED	MOTOR +
BLACK	MOTOR -

NOTE: THIS DRAWING HAS BEEN CREATED BY AUTOCAD.
 MANUAL REVISIONS ARE NOT ALLOWED.

DRAWN 11-18-02 JKH		SIZE	NUMBER
CHECKED		C	ID23000
APPROVED		SCALE	1:1
TITLE		D.C. MOTOR	
TOLERANCES ON DECIMALS FRACTIONS ±1/64 XX ±.010 ANGLES ±1/2° XXX ±.005 UNLESS OTHERWISE SPECIFIED DIMENSIONS ARE IN INCHES			

THIS DRAWING AND THE INFORMATION DISCLOSED HEREIN ARE PROPRIETARY
 DATA OF MOTION CONTROL GROUP, AND IS TO BE IMMEDIATELY RETURNED UPON
 REQUEST. REPRODUCTION OF THIS DRAWING OR THE INFORMATION CONTAINED
 HEREIN IS PROHIBITED WITHOUT THE EXPRESSED WRITTEN APPROVAL OF MCG.