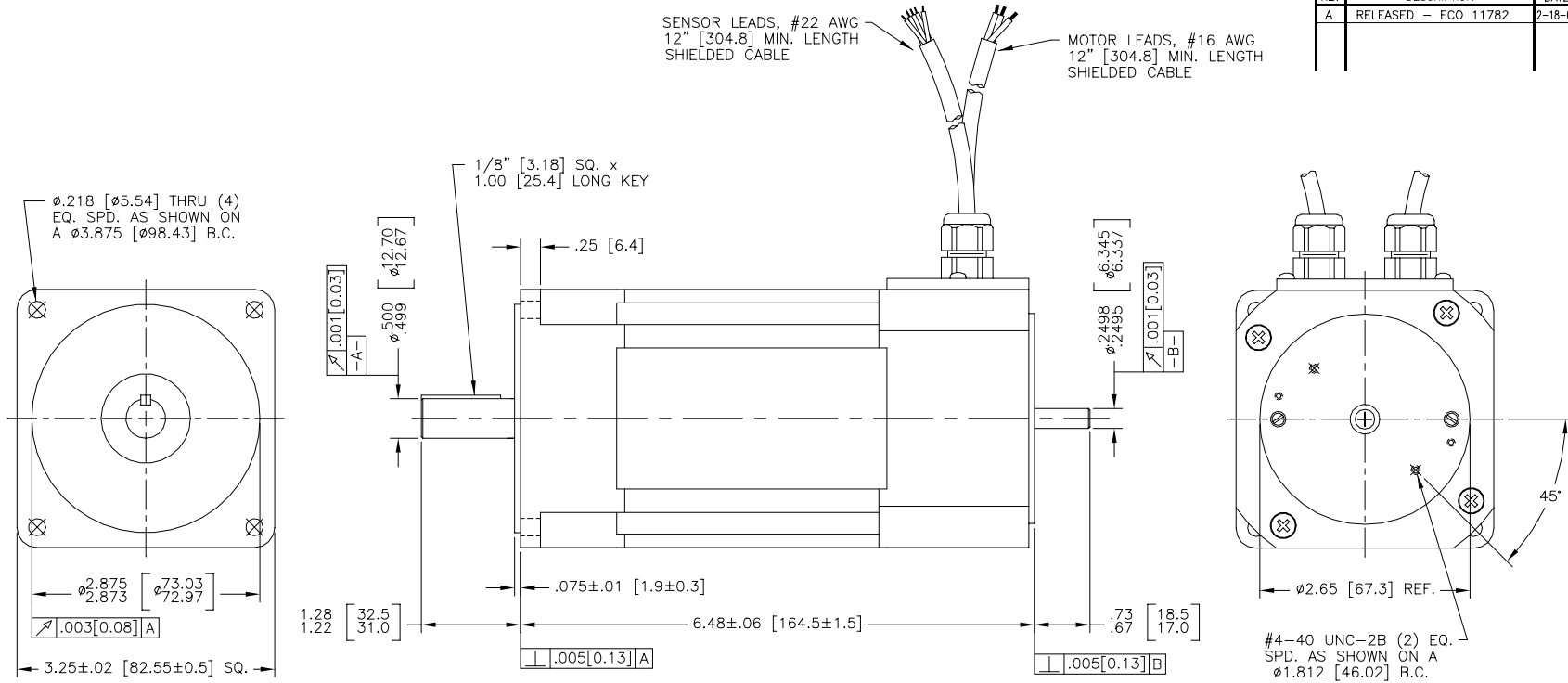
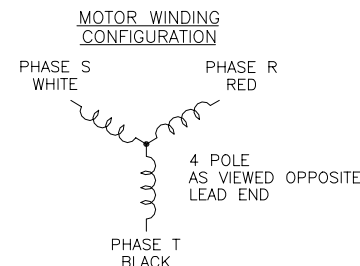
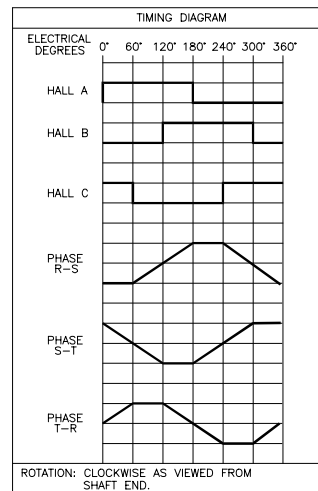


REVISIONS			
REV	DESCRIPTION	DATE	APPD
A	RELEASED - ECO 11782	2-18-03	GKH



MOTOR PARAMETERS @25°C			
	TOL.	UNITS	VALUE
MAX. OPERATING SPEED (S _{nl})	MAX.	R.P.M.	6000
CONTINUOUS TORQUE (T _c)	MAX.	IN-LB	16.25
PEAK TORQUE (T _p)	MAX.	IN-LB	65.0
TORQUE SENSITIVITY (K _t)	±10%	IN-LB/AMPS	1.55
BACK EMF CONSTANT (K _e) (L-L, D.C.)	±10%	V/K R.P.M.	18.50
D.C. RESISTANCE (R _t) (L-L)	±10%	OHMS	0.50
INDUCTANCE (L) (L-L)	±30%	mH	1.95
ROTOR INERTIA (J _a)	NOM.	IN-LB-SEC ²	0.00188
FRICTION TORQUE (T _f)	NOM.	IN-LB	0.20
DAMPING TORQUE (T _d)	NOM.	IN-LB/KRPM	0.07
WINDING TEMPERATURE	MAX.	°C	155
WEIGHT	NOM.	LBS	10.3



MOTOR CONNECTIONS	
COLOR	FUNCTION
RED	PHASE R
WHITE	PHASE S
BLACK	PHASE T

SENSOR CONNECTIONS	
COLOR	FUNCTION
RED	+5-15 VDC
BLACK	GROUND
WHITE	HALL A
ORANGE	HALL B
GREEN	HALL C

DIMENSIONS: INCHES [MILLIMETERS]
 NOTE: THIS DRAWING HAS BEEN CREATED BY AUTOCAD.
 MANUAL REVISIONS ARE NOT ALLOWED.

DRAWN 2-18-03 JWH		SIZE	NUMBER
CHECKED		C	IB32006
APPROVED 2-18-03 JWH		SCALE 1:1	SHEET 1 of 1
TITLE BRUSHLESS D.C. MOTOR		TOLERANCES ON DECIMALS FRACTIONS ±1/64 XXX ±0.10 ANGLES ±1/2° UNLESS OTHERWISE SPECIFIED DIMENSION ARE IN INCHES	

THIS DRAWING AND THE INFORMATION DISCLOSED HEREIN ARE PROPRIETARY DATA OF MOTION CONTROL GROUP, AND IS TO BE IMMEDIATELY RETURNED UPON REQUEST. REPRODUCTION OF THIS DRAWING OR THE INFORMATION CONTAINED HEREIN IS PROHIBITED WITHOUT THE EXPRESSED WRITTEN APPROVAL OF MCG.