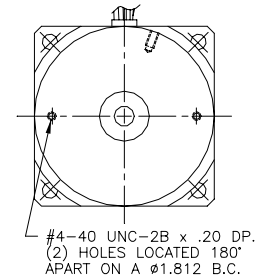
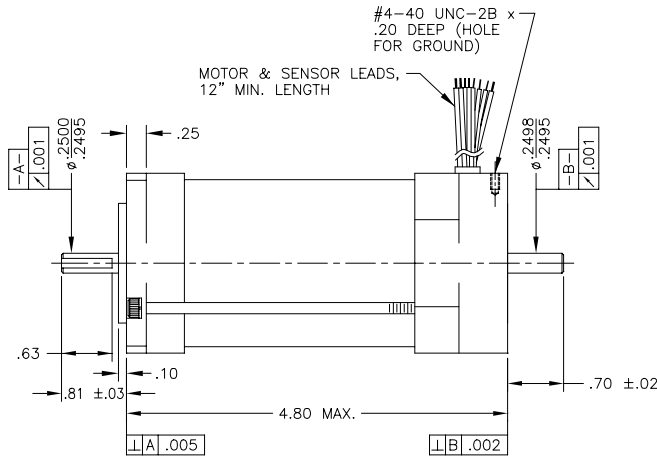
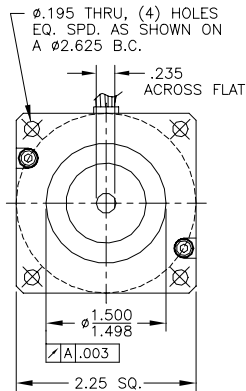


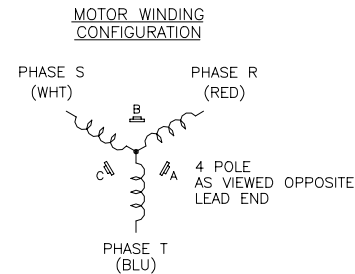
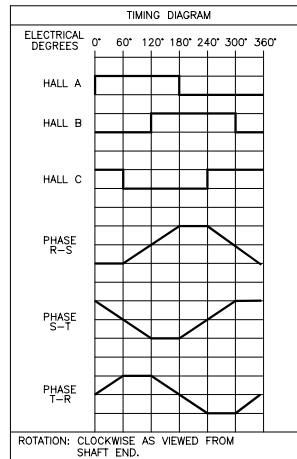
NOTES:

- MOTOR SEALED TO MEET IP 24, WITH LEAD EXIT DOWN.

REVISIONS			
REV	DESCRIPTION	DATE	APPD
A	RELEASED - ECO 11101	12-20-99	GKH



MOTOR PARAMETERS @25°C			
	TOL.	UNITS	VALUE
MAX. OPERATING SPEED (Sn)	MAX.	R.P.M.	4200
CONTINUOUS TORQUE (Tc)	MAX.	OZ-IN	110
PEAK TORQUE (Tp)	MAX.	OZ-IN	330
TORQUE SENSITIVITY (Kt)	±10%	OZ-IN/AMPS	45.4
BACK EMF CONSTANT (Ke)(L-L, DC)	±10%	V/K R.P.M.	33.6
D.C. RESISTANCE (Rt)(L-L)	±10%	OHMS	3.94
INDUCTANCE (L)(L-L)	±15%	mH	3.85
ROTOR INERTIA (Ja)	NOM.	OZ-IN-SEC <sup>2</sup>	0.0055
FRICTION TORQUE (Tf)	NOM.	OZ-IN	2.5
DAMPING TORQUE (Td)	NOM.	OZ-IN/KRPM	1.0
WINDING TEMPERATURE	MAX.	°C	125
WEIGHT	NOM.	LBS	3.8



LEADWIRE COLOR CODE		
COLOR	GAUGE	FUNCTION
RED	#20 AWG	PHASE R
WHITE	#20 AWG	PHASE S
BLUE	#20 AWG	PHASE T
BROWN	#22 AWG	HALL A
ORANGE	#22 AWG	HALL B
YELLOW	#22 AWG	HALL C
RED	#22 AWG	+5-15 VDC
BLACK	#22 AWG	GROUND

NOTE: THIS DRAWING HAS BEEN CREATED BY AUTOCAD. MANUAL REVISIONS ARE NOT ALLOWED.

DRAWN 12-20-99 <i>gja</i>		TITLE	
CHECKED 12-20-99 <i>gja</i>		BRUSHLESS D.C. MOTOR	
APPROVED 12-20-99 <i>gja</i>			
TOLERANCES ON DECIMALS FRACTIONS ±1/64 XX ±.010 ANGLES ±1/2° XXX ±.005 UNLESS OTHERWISE SPECIFIED DIMENSION ARE IN INCHES		SIZE C	NUMBER 1B23007
SCALE 1:1		SHEET 1 of 1	

THIS DRAWING AND THE INFORMATION DISCLOSED HEREIN ARE PROPRIETARY DATA OF MOTION CONTROL GROUP, AND IS TO BE IMMEDIATELY RETURNED UPON REQUEST. REPRODUCTION OF THIS DRAWING OR THE INFORMATION CONTAINED HEREIN IS PROHIBITED WITHOUT THE EXPRESSED WRITTEN APPROVAL OF MCG.