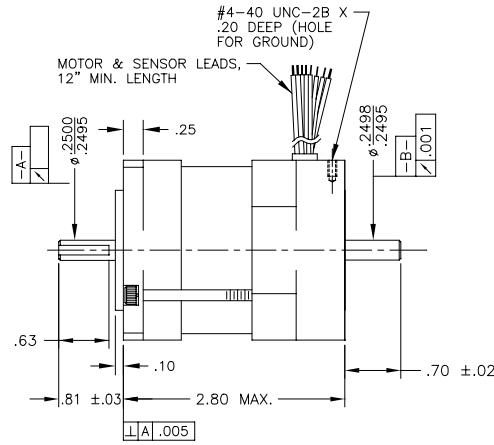
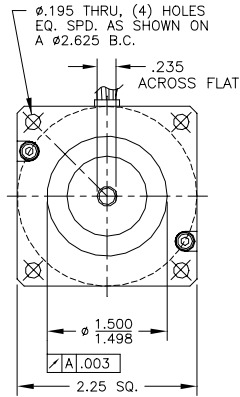
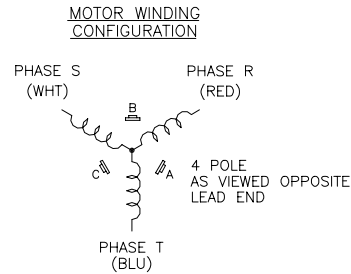
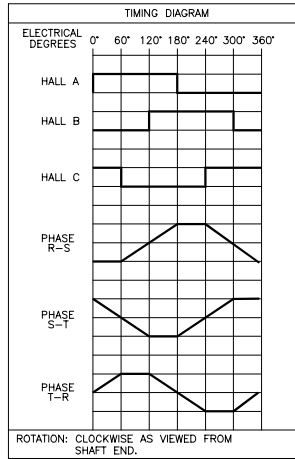


- NOTES:
1. MOTOR SEALED TO MEET IP 24, WITH LEAD EXIT DOWN.

REVISIONS			
REV	DESCRIPTION	DATE	APPD
P1	PRELIMINARY	11-15-02	JPH



MOTOR PARAMETERS @25°C			
	TOL.	UNITS	VALUE
MAX. OPERATING SPEED (Sn)	MAX.	R.P.M.	6000
CONTINUOUS TORQUE (Tc)	MAX.	OZ-IN	50
PEAK TORQUE (Tp)	MAX.	OZ-IN	150
TORQUE SENSITIVITY (kt)	±10%	OZ-IN/AMPS	15.1
BACK EMF CONSTANT (Ke)(L-L, DC)	±10%	V/K R.P.M.	11.2
D.C. RESISTANCE (Rt)(L-L)	±10%	OHMS	2.09
INDUCTANCE (L)(L-L)	±15%	mH	1.6
ROTOR INERTIA (Ja)	NOM.	OZ-IN-SEC ²	0.0019
FRICTION TORQUE (Tf)	NOM.	OZ-IN	1.5
DAMPING TORQUE (Td)	NOM.	OZ-IN/KRPM	0.4
WINDING TEMPERATURE	MAX.	°C	125
WEIGHT	NOM.	LBS	2.0



LEADWIRE COLOR CODE		
COLOR	GAUGE	FUNCTION
RED	#20 AWG	PHASE R
WHITE	#20 AWG	PHASE S
BLUE	#20 AWG	PHASE T
BROWN	#22 AWG	HALL A
ORANGE	#22 AWG	HALL B
YELLOW	#22 AWG	HALL C
RED	#22 AWG	+5-15 VDC
BLACK	#22 AWG	GROUND

NOTE: THIS DRAWING HAS BEEN CREATED BY AUTOCAD. MANUAL REVISIONS ARE NOT ALLOWED.

DRAWN		SIZE	NUMBER
CHECKED		C	1B23000
APPROVED		SCALE	1:1
TITLE		BRUSHLESS D.C. MOTOR	
TOLERANCES ON DECIMALS FRACTIONS ±1/64 XX ±.010 ANGLES ±1/2° XXX ±.005 UNLESS OTHERWISE SPECIFIED DIMENSIONS ARE IN INCHES			

THIS DRAWING AND THE INFORMATION DISCLOSED HEREIN ARE PROPRIETARY DATA OF MOTION CONTROL GROUP, AND IS TO BE IMMEDIATELY RETURNED UPON REQUEST. REPRODUCTION OF THIS DRAWING OR THE INFORMATION CONTAINED HEREIN IS PROHIBITED WITHOUT THE EXPRESSED WRITTEN APPROVAL OF MCG.