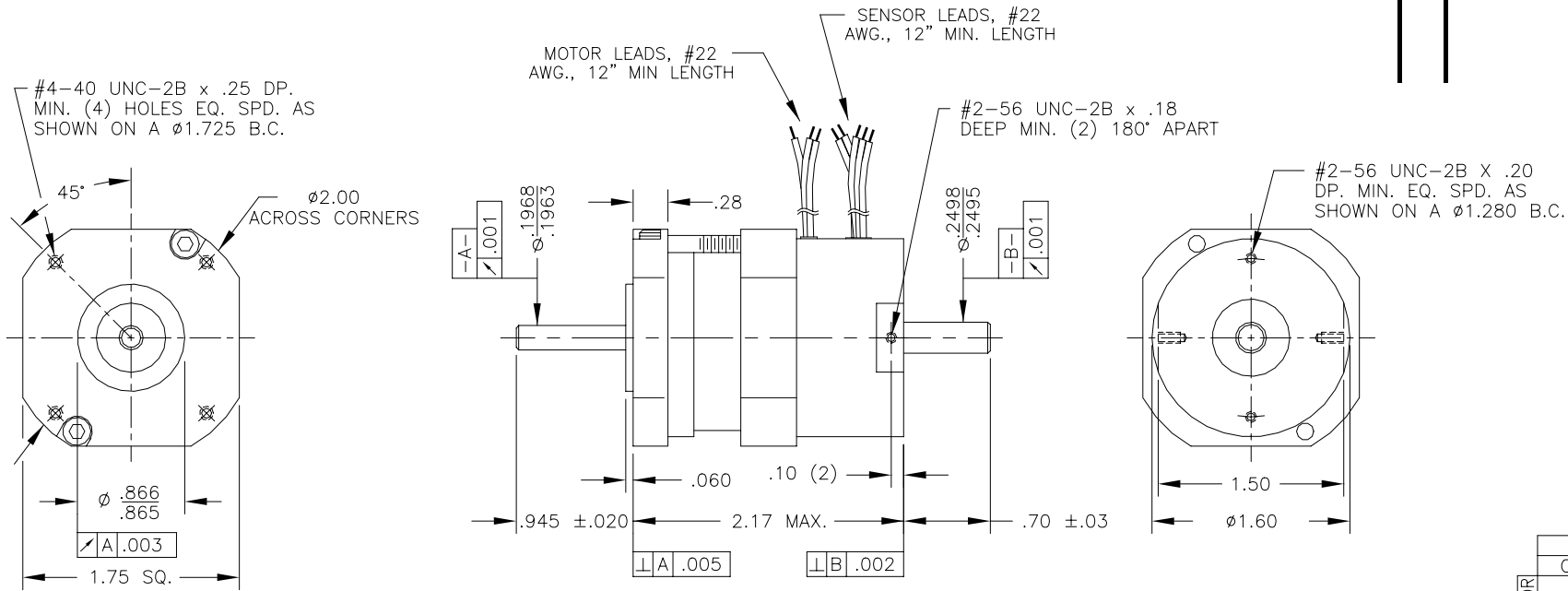


REVISIONS

REV	DESCRIPTION	DATE	APPD

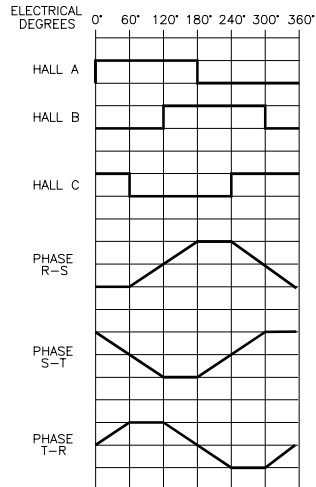


LEADWIRE COLOR CODE	
COLOR	FUNCTION
RED	PHASE R
WHITE	PHASE S
BLUE	PHASE T
BROWN	HALL A
ORANGE	HALL B
YELLOW	HALL C
RED	+5-15 VDC
BLACK	GROUND

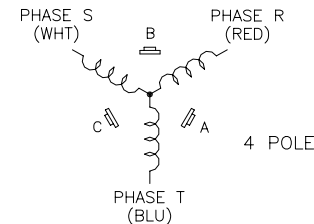
MOTOR PARAMETERS @25°C

	TOL.	UNITS	VALUE
MAX. OPERATING SPEED (Snl)	MAX.	R.P.M.	9000
CONTINUOUS TORQUE (Tc)	MAX.	OZ-IN	10
PEAK TORQUE (Tp)	MAX.	OZ-IN	50
TORQUE SENSITIVITY (kt)	\pm 10%	OZ-IN/AMPS	6.06
BACK EMF CONSTANT (Ke)	\pm 10%	V/K R.P.M.	4.48
D.C. RESISTANCE (Rt)	\pm 10%	OHMS	5.82
INDUCTANCE (L)	\pm 15%	mH	2.38
ROTOR INERTIA (Ja)	NOM.	OZ-IN-SEC ²	.00024
FRICTION TORQUE (Tf)	NOM.	OZ-IN	0.69
DAMPING TORQUE (Td)	NOM.	OZ-IN/KRPM	0.2
WINDING TEMPERATURE	MAX.	°C	155
WEIGHT	NOM.	LBS	0.64

TIMING DIAGRAM



MOTOR WINDING CONFIGURATION



NOTE: THIS DRAWING HAS BEEN CREATED BY AUTOCAD. MANUAL REVISIONS ARE NOT ALLOWED.

DRAWN TRAVIS
9-13-95
CHECKED RJT
9-13-95
APPROVED
9-13-95



TITLE BRUSHLESS D.C. MOTOR

TOLERANCES ON	SIZE	NUMBER
DECIMALS	B	IB17000
FRACTIONS \pm 1/64		
XX \pm .010		
ANGLES \pm 1/2°		
XXX \pm .005		
UNLESS OTHERWISE SPECIFIED DIMENSION ARE IN INCHES	SCALE 1:1	SHEET 1 of 1

THIS DRAWING AND THE INFORMATION DISCLOSED HEREIN ARE PROPRIETARY DATA OF MOTION CONTROL GROUP AND IS TO BE IMMEDIATELY RETURNED UPON REQUEST. REPRODUCTION OF THIS DRAWING OR THE INFORMATION CONTAINED HEREIN IS PROHIBITED WITHOUT THE EXPRESSED WRITTEN APPROVAL OF MCG.

ROTATION: CLOCKWISE AS VIEWED FROM SHAFT END.