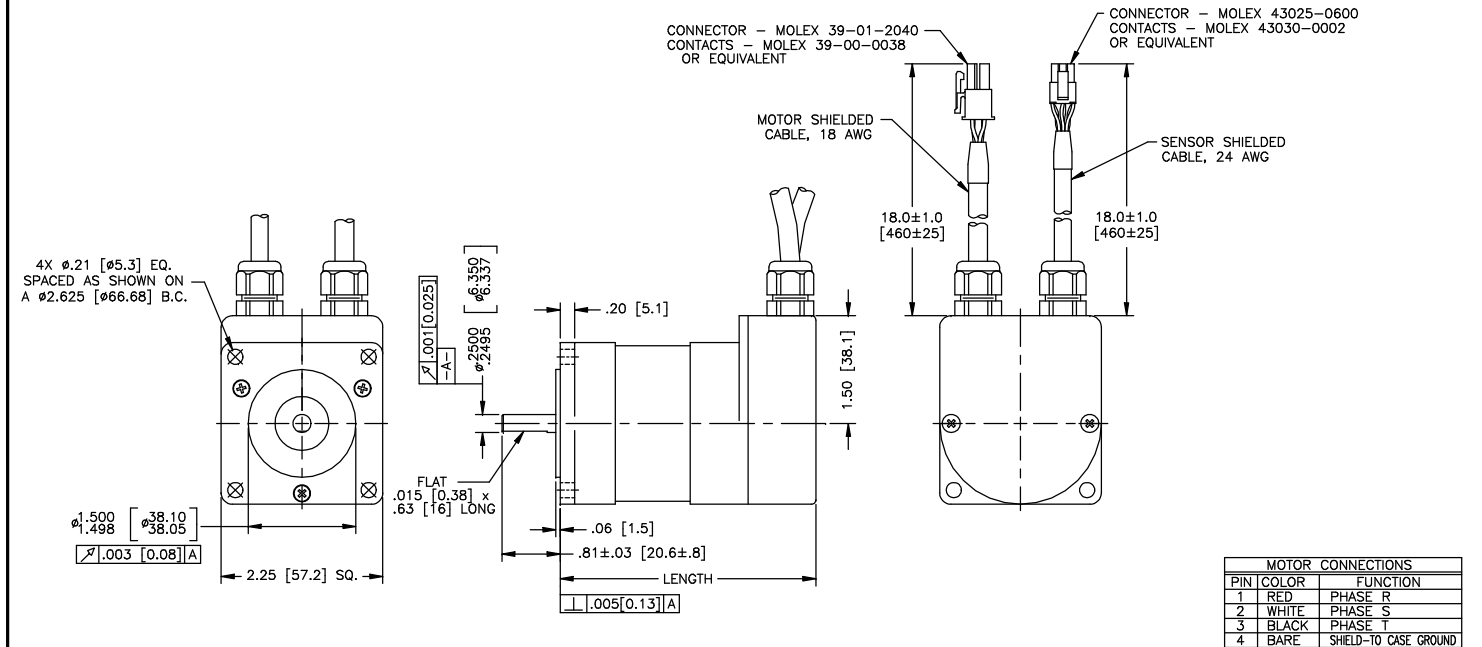


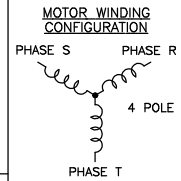
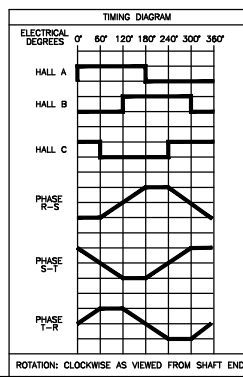
REVISIONS			
REV	DESCRIPTION	DATE	APPD
P1	PRELIMINARY	9-11-06	
P2	PRELIMINARY	9-12-06	
P3	PRELIMINARY	9-25-06	
P4	PRELIMINARY	10-16-06	



MOTOR CONNECTIONS		
PIN	COLOR	FUNCTION
1	RED	PHASE R
2	WHITE	PHASE S
3	BLACK	PHASE T
4	BARE	SHIELD-TO CASE GROUND

SENSOR CONNECTIONS		
PIN	COLOR	FUNCTION
1	RED	+Vcc
2	BLACK	GROUND
3	BROWN	HALL A
4	ORANGE	HALL B
5	YELLOW	HALL C
6	BARE	SHIELD

MOTOR PARAMETERS @25°C			MODEL	MODEL	MODEL
	TOL.	UNITS	I2351	I2352	I2353
MAX. OPERATING SPEED (S _n)	MAX.	R.P.M.	12,000	12,000	12,000
CONTINUOUS TORQUE (T _c)	MAX.	OZ-IN	16	28	41
PEAK TORQUE (T _p)	MAX.	OZ-IN	40.0	75.2	110.4
CONTINUOUS CURRENT (I _c)	MAX.	AMPS	7.74	7.20	7.02
PEAK CURRENT (I _p)	MAX.	AMPS	20.6	19.3	18.9
TORQUE SENSITIVITY (K _t)	±10%	OZ-IN/AMPS	1.94	3.89	5.83
BACK EMF CONSTANT (K _e) (L-L, D.C.)	±10%	V/K R.P.M.	1.44	2.88	4.32
D.C. RESISTANCE (R _t) (L-L)	±10%	OHMS	0.33	0.46	0.56
INDUCTANCE (L) (L-L)	±15%	mH	0.38	0.60	1.00
ROTOR INERTIA (J _r)	NOM.	OZ-IN-SEC ²	0.0005	0.0010	0.0013
FRICTION TORQUE (T _f)	NOM.	OZ-IN	1.6	2.4	3.2
DAMPING TORQUE (T _d)	NOM.	OZ-IN/KRPM	0.08	0.13	0.18
WINDING TEMPERATURE	MAX.	°C	125	125	125
WEIGHT	NOM.	LBS	1.0	1.5	2.1
LENGTH	±.06 [1.5]	IN [MM]	2.96 [75.2]	3.56 [90.4]	4.16 [105.6]



DIMENSIONS: INCHES [MILLIMETERS]
NOTE: THIS DRAWING HAS BEEN CREATED BY AUTOCAD. MANUAL REVISIONS ARE NOT ALLOWED.

Drawn: *[Signature]*
Checked: *[Signature]*
Approved: *[Signature]*

MCG MOTION CONTROL GROUP

TITLE: BRUSHLESS D.C. MOTOR

TOLENCES ON DECIMALS: FRACTIONS: 1/64 XX: 2,010 ANGLES: ±1/2° XXX: 3.000 UNLESS OTHERWISE SPECIFIED DIMENSIONS ARE IN INCHES

SIZE: C NUMBER: 12350 SERIES

SCALE: 1:1 SHEET 1 of 1

THIS DRAWING AND THE INFORMATION DISCLOSED HEREIN ARE PROPRIETARY DATA OF MOTION CONTROL GROUP, AND IS TO BE IMMEDIATELY RETURNED UPON REQUEST. REPRODUCTION OF THIS DRAWING OR THE INFORMATION CONTAINED HEREIN IS PROHIBITED WITHOUT THE EXPRESSED WRITTEN APPROVAL OF MCG.