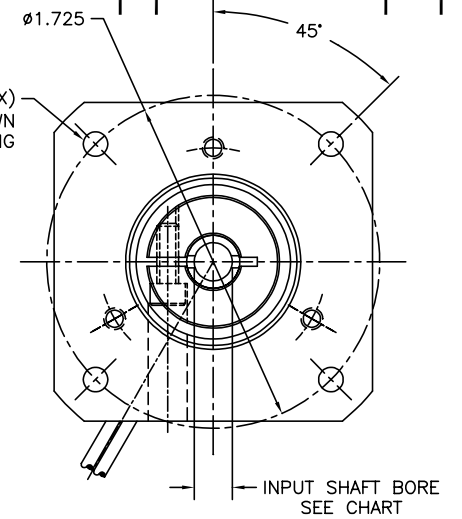
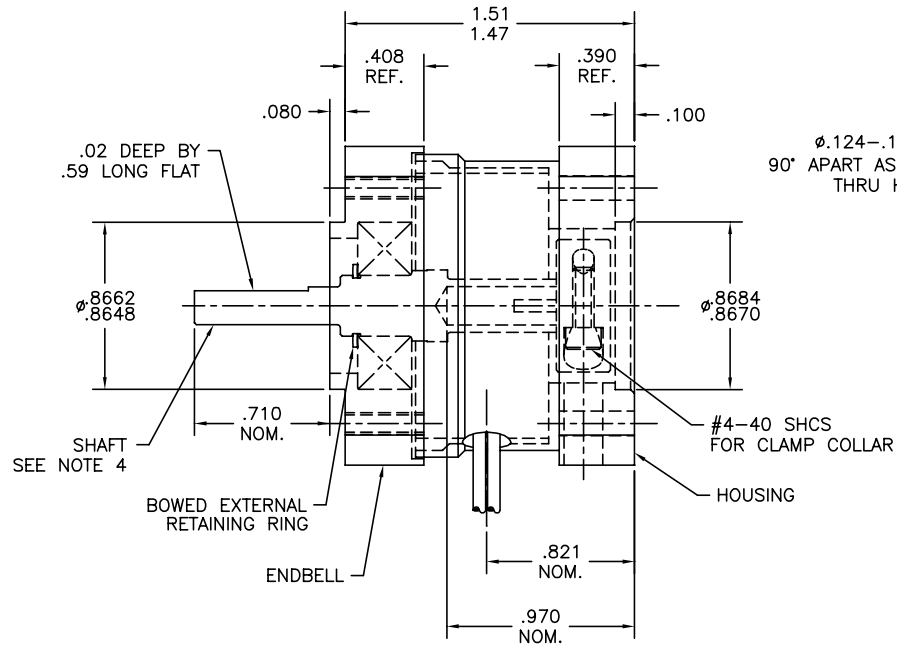
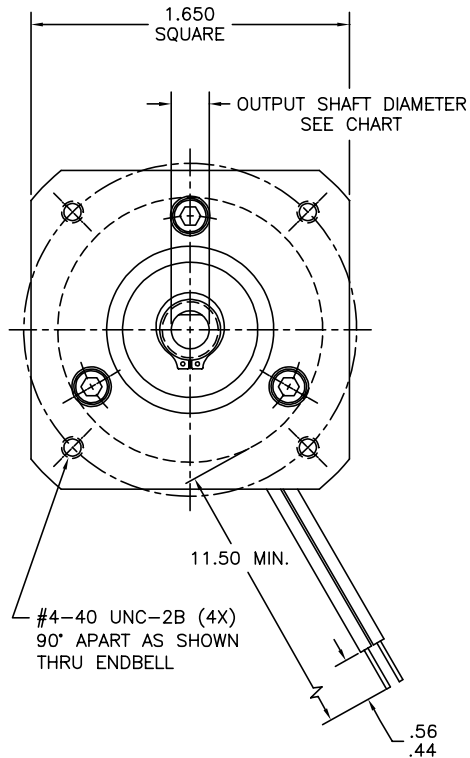
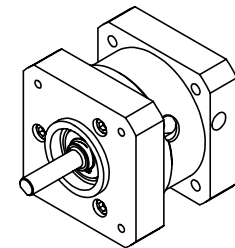


REVISIONS			
REV	DESCRIPTION	DATE	APPD
A	RELEASED - ECO NONE	5-26-00	GKH



NOMINAL COIL DATA @ 20°C:			
VOLTS	WATTS	AMPS	OHMS
24 VDC	5.2	.220	117

OUTPUT SHAFT DIAMETER		INPUT SHAFT BORE	
5 mm	4.989-4.999 mm	5 mm	5.004-5.156 mm



ISOMETRIC VIEW
SCALE: 1:1

NOTES:

- 1.) STATIC TORQUE RATING OF BRAKE: 1 LB-IN. MINIMUM.
- 2.) LEAD WIRE DATA: 22 AWG, 7/30 STRANDED, 105°C, 300 V, UL STYLE 1430, CSA REW INSULATION: .064 NOMINAL O.D., COLOR - WHITE EXCEPT 120 VAC, ONE WHITE & ONE BLACK.
- 3.) NOMINAL COIL VOLTAGE MUST BE APPLIED FOR PROPER BRAKE RELEASE.
- 4.) SHAFT IS BALL BEARING MOUNTED.
- 5.) SHAFT MATERIAL: STAINLESS STEEL
- 6.) UNIT COLOR: BLACK
- 7.) REF: SHAFT MAY BE REMOVED BY REMOVING BOWED EXTERNAL RETAINING RING.
- 8.) (4) #4-40 X 5/8 SOCKET HEAD CAP SCREWS ARE SUPPLIED WITH UNIT.

THIS DRAWING AND THE INFORMATION DISCLOSED HEREIN ARE PROPRIETARY DATA OF MOTION CONTROL GROUP, AND IS TO BE IMMEDIATELY RETURNED UPON REQUEST. REPRODUCTION OF THIS DRAWING OR THE INFORMATION CONTAINED HEREIN IS PROHIBITED WITHOUT THE EXPRESSED WRITTEN APPROVAL OF MCG.

NOTE: THIS DRAWING HAS BEEN CREATED BY AUTOCAD. MANUAL REVISIONS ARE NOT ALLOWED.

DRAWN 3/30/00 OTTO		SIZE	NUMBER
CHECKED		C	B7
APPROVED		TITLE NEMA 17 BRAKE	
TOLERANCES ON DECIMALS FRACTIONS ±1/64 XX ±.010 ANGLES ±1/2° XXX ±.005 UNLESS OTHERWISE SPECIFIED DIMENSION ARE IN INCHES		SCALE 1:1	SHEET 1 of 1