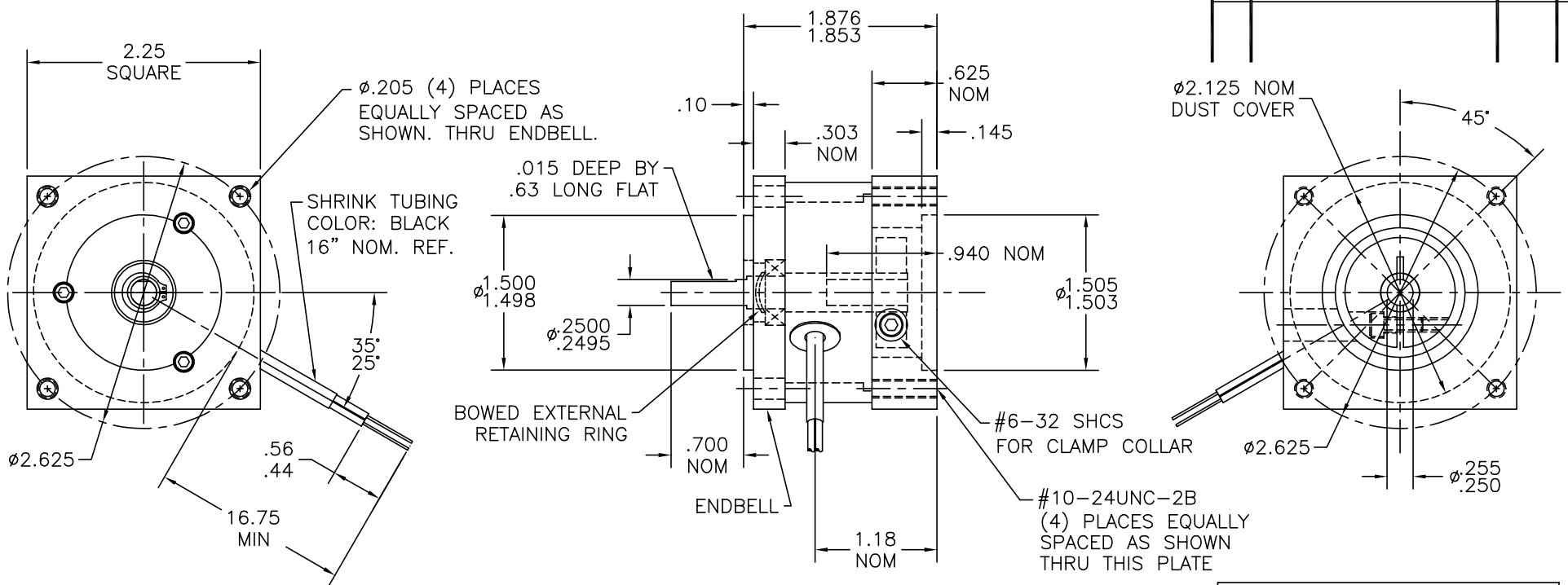


REVISIONS			
REV	DESCRIPTION	DATE	APPD
A	RELEASED - ECO NONE	11-21-00	GKH



**NOTES:**

- 1.) STATIC TORQUE RATING OF BRAKE: 3 LBS-IN. MINIMUM
- 2.) LEAD WIRE DATA: 22 AWG, 7/30 STRANDED, 105°C, 300 V, UL STYLE 1430, INSULATION: .064 NOMINAL O.D., COLOR - WHITE
- 3.) 24 VDC MUST BE APPLIED FOR PROPER BRAKE RELEASE.
- 4.) SHAFT MAY BE REMOVED BY REMOVING BOWED EXTERNAL RETAINING RING.
- 5.) SHAFT IS BALL BEARING MOUNTED
- 6.) SHAFT MATERIAL: STAINLESS STEEL
- 7.) UNIT COLOR: BLACK
- 8.) (4) #10-24 X 5/8 SOCKET HEAD CAP SCREWS ARE SUPPLIED WITH UNIT.

NOMINAL COIL DATA @ 20°C:			
VOLTS	WATTS	AMPS	OHMS
24 VDC	4.36	.181	132

NOTE: THIS DRAWING HAS BEEN CREATED BY AUTOCAD. MANUAL REVISIONS ARE NOT ALLOWED.

THIS DRAWING AND THE INFORMATION DISCLOSED HEREIN ARE PROPRIETARY DATA OF MOTION CONTROL GROUP AND IS TO BE IMMEDIATELY RETURNED UPON REQUEST. REPRODUCTION OF THIS DRAWING OR THE INFORMATION CONTAINED HEREIN IS PROHIBITED WITHOUT THE EXPRESSED WRITTEN APPROVAL OF MCG.

DRAWN	<input type="checkbox"/> TTD	<b>MCG</b> MOTION CONTROL GROUP	
CHECKED			
APPROVED	<i>[Signature]</i>		
TITLE			
23 FRAME MOTOR BRAKE			
TOLERANCES ON		SIZE	NUMBER
DECIMALS - FRACTIONS $\pm 1/64$		B	B3
XX $\pm .010$ ANGLES $\pm 1/2^\circ$			
XXX $\pm .005$			
UNLESS OTHERWISE SPECIFIED DIMENSION ARE IN INCHES		SCALE 1:1	SHEET <u>1</u> of <u>1</u>