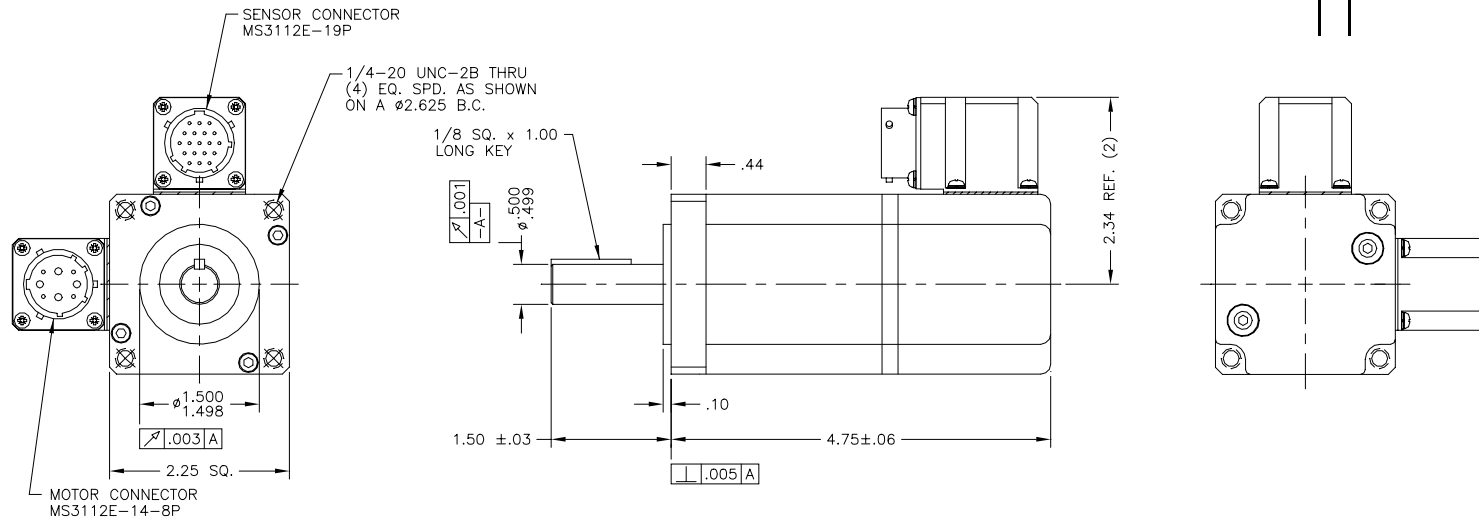
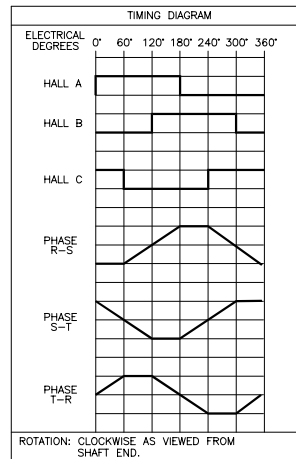


REVISIONS			
REV	DESCRIPTION	DATE	APPD
P1	PRELIMINARY	10-22-02	JPH

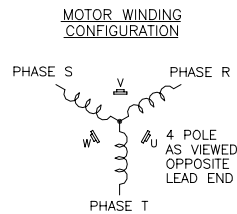


MOTOR PARAMETERS @25°C			
	TOL.	UNITS	VALUE
MAX. OPERATING SPEED (S _{nl})	MAX.	R.P.M.	6000
CONTINUOUS TORQUE (T _c)	MAX.	IN-LB	3.75
PEAK TORQUE (T _p)	MAX.	IN-LB	11.25
TORQUE SENSITIVITY (K _t)	±10%	IN-LB/AMPS	1.0
BACK EMF CONSTANT (K _e) (L-L, D.C.)	±10%	V/K R.P.M.	11.89
D.C. RESISTANCE (R _t) (L-L)	±10%	OHMS	2.22
INDUCTANCE (L) (L-L)	±15%	mH	1.81
ROTOR INERTIA (J _a)	NOM.	IN-LB-SEC ²	0.000138
FRICTION TORQUE (T _f)	NOM.	IN-LB	0.18
DAMPING TORQUE (T _d)	NOM.	IN-LB/KRPM	0.03
WINDING TEMPERATURE	MAX.	°C	125
WEIGHT	NOM.	LBS	2.2



MOTOR CONNECTOR PINOUT	
PIN	FUNCTION
1	PHASE R
2	PHASE S
3	PHASE T
4	CASE GROUND

SENSOR CONNECTOR PINOUT	
PIN	FUNCTION
A	THERMOSTAT
B	THERMOSTAT
C	HALL B
D	N.C.
E	N.C.
F	N.C.
G	N.C.
H	N.C.
J	SENSOR GROUND
K	N.C.
L	+5-15 VDC SENSOR
M	HALL A
N	N.C.
P	N.C.
R	HALL C
S	N.C.
T	N.C.
U	N.C.
V	N.C.



NOTE: THIS DRAWING HAS BEEN CREATED BY AUTOCAD.
MANUAL REVISIONS ARE NOT ALLOWED.

DRAWN 8-27-01 JPH		SIZE	NUMBER
CHECKED		C	AB23000
APPROVED		SCALE	1:1
TITLE BRUSHLESS D.C. MOTOR			
TOLERANCES ON DECIMALS FRACTIONS ±1/64 XXX ±0.010 ANGLES ±1/2° XXX ±0.005 UNLESS OTHERWISE SPECIFIED DIMENSIONS ARE IN INCHES			

THIS DRAWING AND THE INFORMATION DISCLOSED HEREIN ARE PROPRIETARY DATA OF MOTOR CONTROL GROUP AND IS TO BE IMMEDIATELY RETURNED UPON REQUEST. REPRODUCTION OF THIS DRAWING OR THE INFORMATION CONTAINED HEREIN IS PROHIBITED WITHOUT THE EXPRESSED WRITTEN APPROVAL OF MCG.