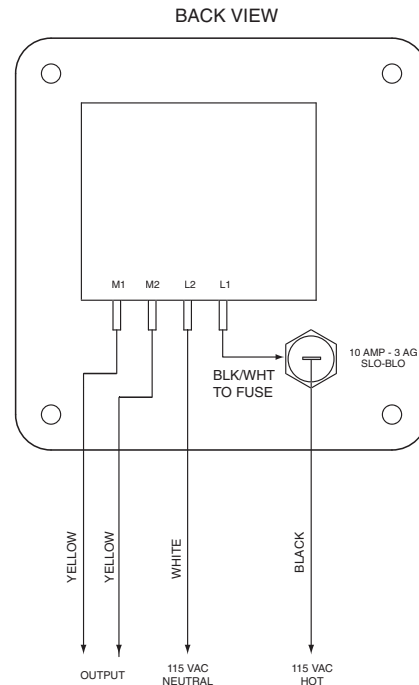
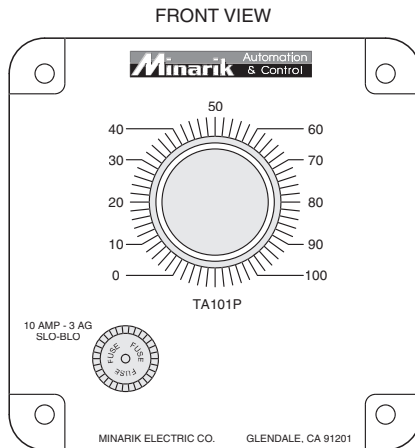


TA101P TRIAC CONTROL FOR 3/4 HP OR LESS MOTORS

NOTE If the speed pot is remote from the control, add 5600 OHM 1/2 WATT resistors in series with each lead from the speed pot. Mount the resistors on the printed wiring board. This modification will prevent catastrophic destruction of the diac or triac should the pot become grounded.



MINARIK CORPORATION
 901 East Thompson Avenue, Glendale, CA 91201-2011;
 Phone: (800) MINARIK (646-2745); Fax: (800) 394-6334
 Document Number 250-0121, Revision 1;
 Printed in the U.S.A. – 03/02

Copyright 2002 by Minarik Corporation - All rights reserved. No part of this manual may be reproduced or transmitted in any form without written permission from Minarik Corporation. The information and technical data in this manual are subject to change without notice. Minarik Corporation and its Divisions make no warranty of any kind with respect to this material, including, but not limited to, the implied warranties of its merchantability and fitness for a given purpose. Minarik Corporation and its Divisions assume no responsibility for any errors that may appear in this manual and make no commitment to update or to keep current the information in this manual.