

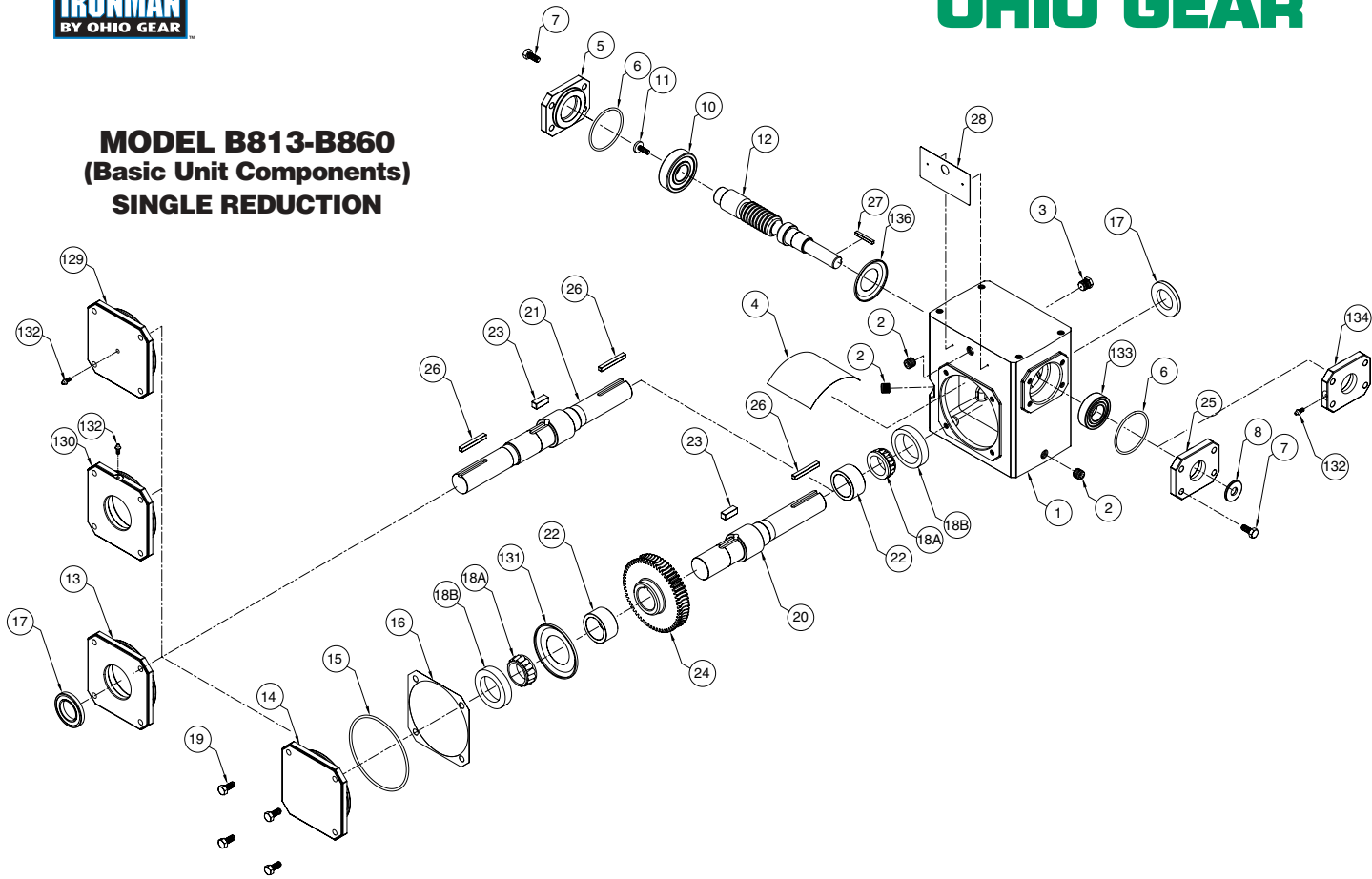


TECHNICAL INFORMATION



OHIO GEAR™

MODEL B813-B860 (Basic Unit Components) SINGLE REDUCTION



BASIC SINGLE REDUCTION UNIT (B-STYLE)

ITEM # DESCRIPTION

- 1 HOUSING
- 2 PIPE PLUG
- 3 VENT PLUG
- 4 SPLASH GUARD
- 5 INPUT CAP
- 6 O-RING
- 7 HEX HEAD CAP SCREW
- 8 INPUT OIL SEAL
- 9 INPUT BEARING (cup and cone for 842 and larger units)
- 10 INPUT BEARING (cup and cone for 842 and larger units)
- *11 RETAINING SCREW
- 12 INPUT WORM SHAFT
- 13 OUTPUT COVER - OPEN
- 14 OUTPUT COVER - CLOSED
- 15 O-RING
- 16 OUTPUT COVER SHIM (as required)
- 17 OUTPUT OIL SEAL
- 18 OUTPUT BEARING (18A. CONE, 18B. CUP)
- 19 HEX HEAD CAP SCREW

- ♣20 OUTPUT SHAFT - SINGLE
- ♣21 OUTPUT SHAFT - DOUBLE
- 22 GEAR SPACER
- 23 GEAR KEY (only used on size 826 and larger units)
- ♣24 OUTPUT GEAR
- *25 INPUT COVER
- 26 KEY - OUTPUT EXTENSION
- 27 KEY - INPUT EXTENSION
- 28 NAMEPLATE

QUILL MOTOR FLANGE UNIT (BMQ-STYLE)

- 40 QUILL MOTOR FLANGE
- 41 INPUT OIL SEAL
- 42 HEX HEAD CAP SCREW (flange to housing)
- 43 RETAINING RING - SHAFT
- *44 RETAINING RING - HOUSING
- 45 QUILL INPUT SHAFT
- 46 KEY - INPUT
- 47 HEX HEAD CAP SCREW (motor to flange)

HOLLOW OUTPUT SHAFT UNIT (H-STYLE)

- 51 OUTPUT COVER
- 52 OUTPUT OIL SEAL

- 53 OUTPUT BEARING (53A. CONE, 53B. CUP)
- 54 GEAR SPACER
- ♣55 OUTPUT SHAFT
- 56 SETSCREW
- 57 GEAR KEY (only used on size 826 and larger units)
- ♣58 OUTPUT GEAR
- 59 OUTPUT KEY

LONG MOTOR FLANGE AND COUPLING KIT (BM-STYLE)

- 110 "C" FACE MOTOR FLANGE
- 111 HEX HEAD CAP SCREW (flange to housing)
- 112 COUPLING KEY - REDUCER SHAFT
- 113 SETSCREW - REDUCER SHAFT
- 114 COUPLING GEAR - REDUCER SHAFT
- 115 COUPLING SLEEVE
- 116 SETSCREW - MOTOR SHAFT
- 117 COUPLING GEAR - MOTOR SHAFT
- 118 COUPLING KEY - MOTOR SHAFT
- 119 HEX HEAD CAP SCREW

- 120 PLASTIC PLUG

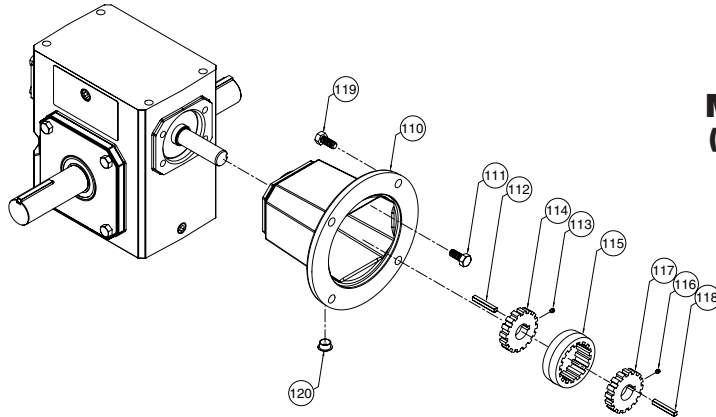
VERTICAL SHAFT REQUIRED PARTS (supplied only when mounting position involves a vertical shaft)

- *129 OUTPUT COVER - CLOSED
- *130 OUTPUT COVER - OPEN
- *131 OUTPUT BEARING GREASE RETAINER
- 132 GREASE FITTING
- 133 SEALED BALL BEARING (only used on size 818 thru 826 units)
- ◆134 INPUT COVER
- ◆136 INPUT BEARING GREASE RETAINER

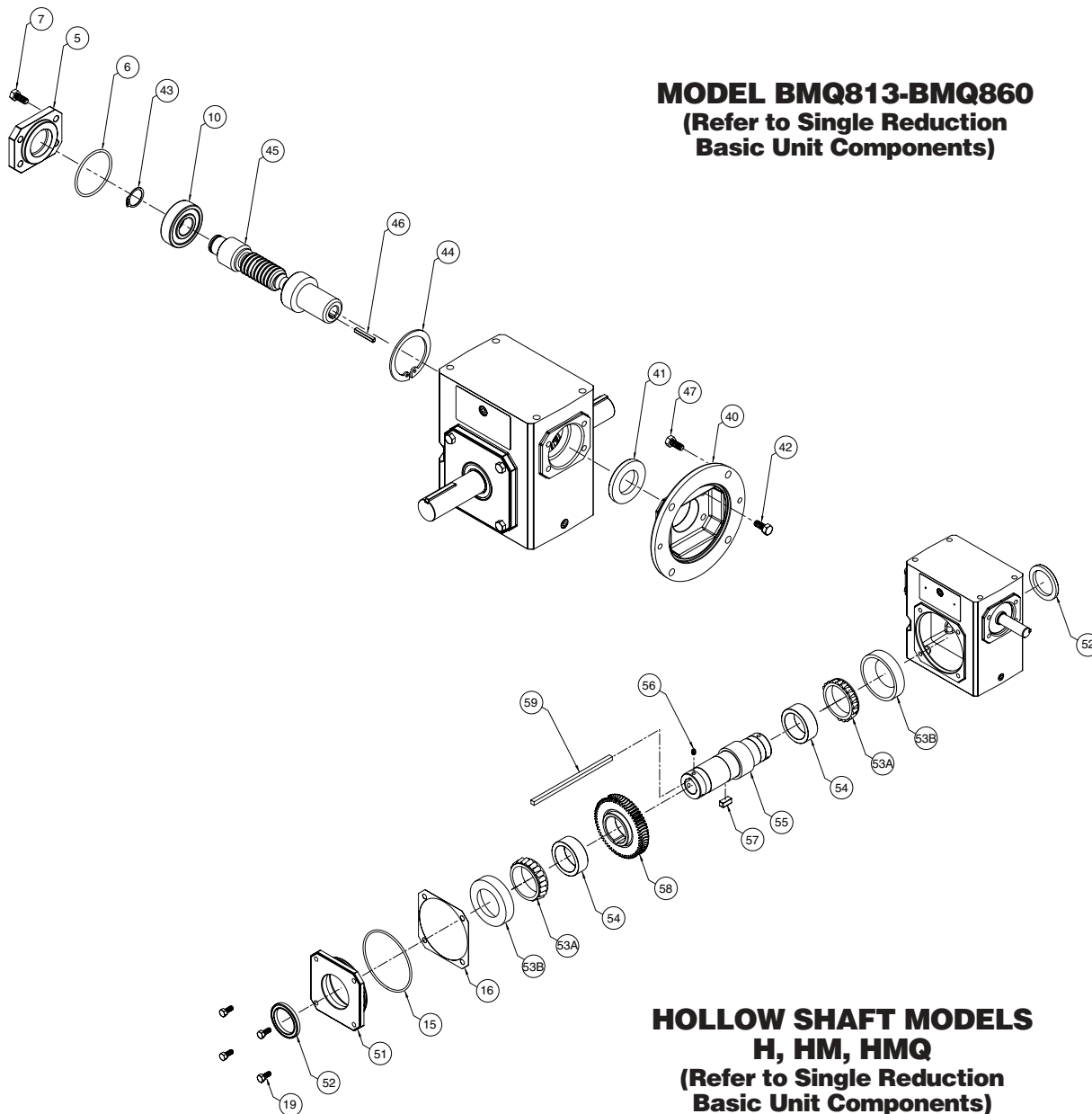
* ONLY USED ON SIZE 842 AND LARGER UNITS

◆ ONLY USED ON SIZE 830 AND LARGER UNITS

♣ SUPPLIED ONLY AS OUTPUT ASSEMBLY ON 813 THROUGH 824 UNITS



MODEL BM813-BM860
 (Refer to Single Reduction
 Basic Unit Components)



HOLLOW SHAFT MODELS
H, HM, HMQ
 (Refer to Single Reduction
 Basic Unit Components)



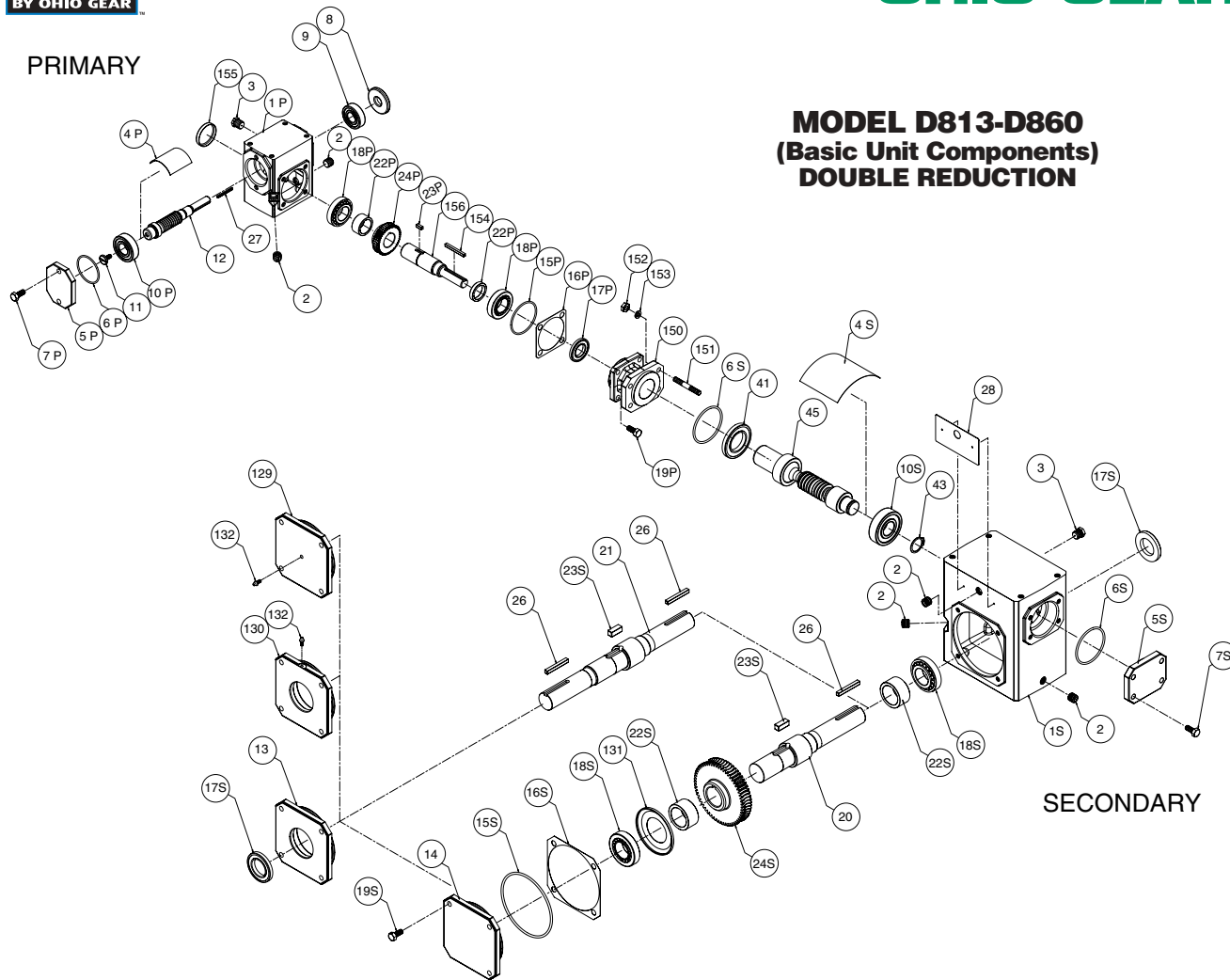
TECHNICAL INFORMATION



OHIO GEAR™

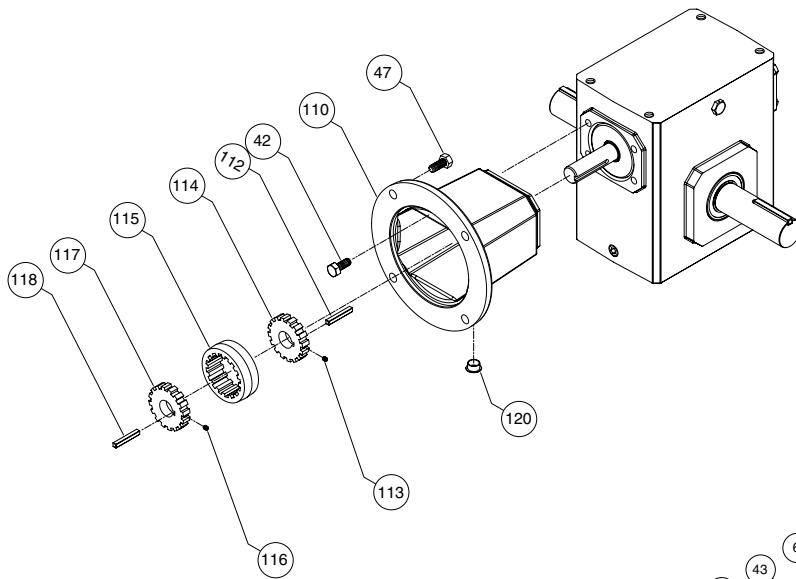
PRIMARY

MODEL D813-D860 (Basic Unit Components) DOUBLE REDUCTION

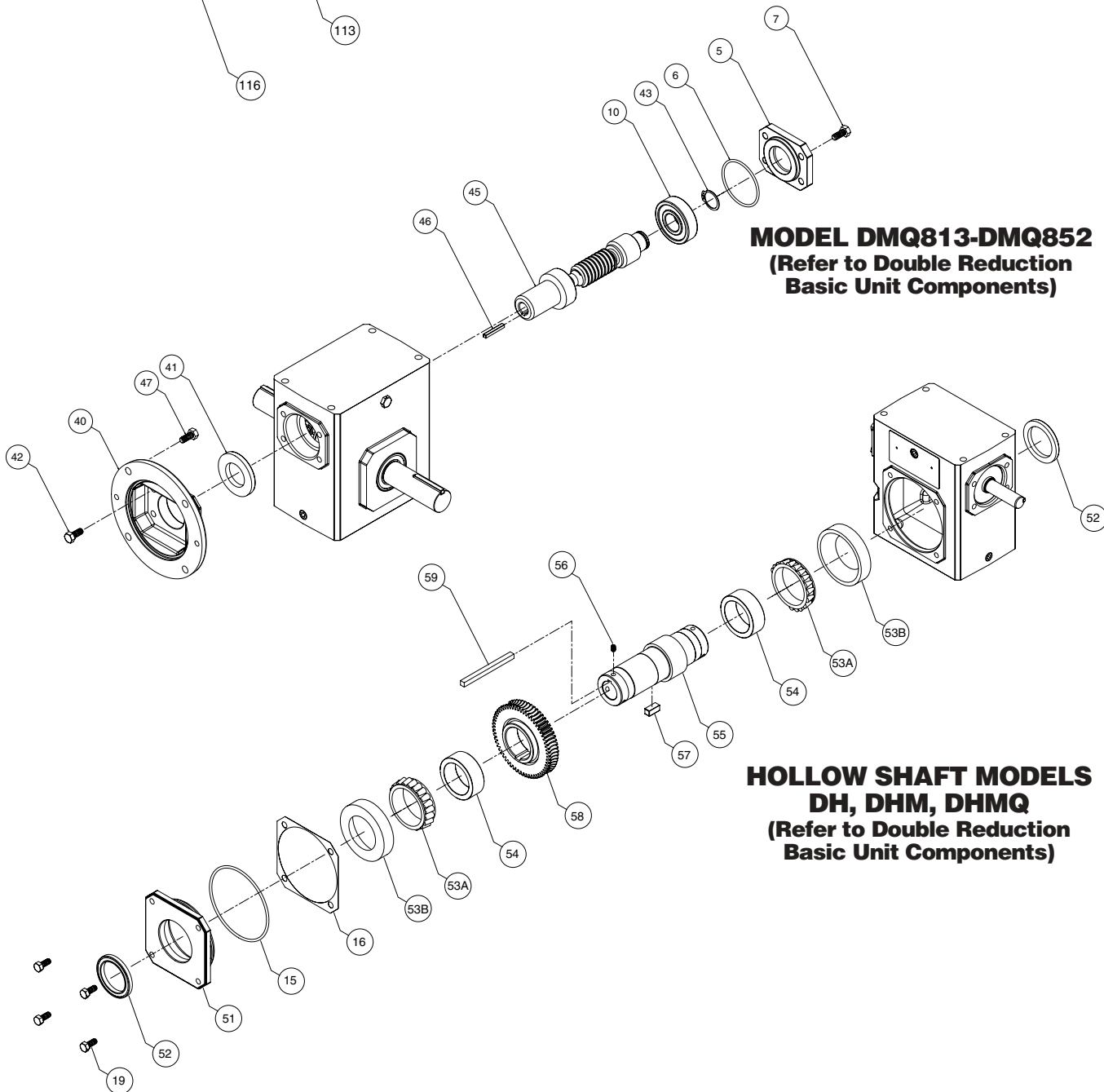


SECONDARY

| DOUBLE REDUCTION UNIT (D-STYLE) | | | | | |
|---------------------------------|---|--|---|--|--|
| ITEM # | DESCRIPTION | | | | |
| 1 | HOUSING | 23 | GEAR KEY (only used on size 826 and larger units) | 47 | HEX HEAD CAP SCREW (motor to flange) SHAFT |
| 2 | PIPE PLUG | *24 | OUTPUT GEAR | 118 | COUPLING KEY - MOTOR SHAFT |
| 3 | VENT PLUG | 26 | KEY - OUTPUT EXTENSION | 47 | HEX HEAD CAP SCREW (motor to flange) |
| 4 | SPLASH GUARD | 27 | KEY - INPUT EXTENSION | 120 | PLASTIC PLUG |
| 5 | INPUT CAP | 28 | NAMEPLATE | VERTICAL SHAFT REQUIRED PARTS (supplied only when mounting position involves a vertical shaft) | |
| 6 | O-RING | 41 | INPUT OIL SEAL | *129 | OUTPUT COVER - CLOSED |
| 7 | HEX HEAD CAP SCREW | 43 | RETAINING RING - SHAFT | *130 | OUTPUT COVER - OPEN |
| 8 | INPUT OIL SEAL | 45 | QUILL INPUT SHAFT | *131 | OUTPUT BEARING GREASE RETAINER |
| 9 | INPUT BEARING (cup and cone for 842 and larger units) | 45 | QUILL INPUT SHAFT | 132 | GREASE FITTING |
| 10 | INPUT BEARING (cup and cone for 842 and larger units) | 150 | DOUBLE REDUCTION ADAPTER | 133 | SEALED BALL BEARING (only used on size 818 thru 826 units) |
| 11 | RETAINING SCREW | 151 | STUD | ◆134 | INPUT COVER |
| 12 | INPUT WORM SHAFT | 152 | HEX NUT | ◆136 | INPUT BEARING GREASE RETAINER |
| 13 | OUTPUT COVER - OPEN | 153 | LOCK WASHER | * ONLY USED ON SIZE 842 AND LARGER UNITS | |
| 14 | OUTPUT COVER - CLOSED | 154 | PRIMARY SOLID OUTPUT KEY | ◆ ONLY USED ON SIZE 830 AND LARGER UNITS | |
| 15 | O-RING | 155 | EXPANSION PLUG | ♣ SUPPLIED ONLY AS OUTPUT ASSEMBLY ON 813 THROUGH 824 UNITS | |
| 16 | OUTPUT COVER SHIM (as required) | 156 | PRIMARY SOLID OUTPUT SHAFT | | |
| 17 | OUTPUT OIL SEAL | QUILL MOTOR FLANGE UNIT (DMQ-STYLE) | | | |
| 18 | OUTPUT BEARING (18A. CONE, 18B. CUP) | 40 | QUILL MOTOR FLANGE | | |
| 19 | HEX HEAD CAP SCREW | 41 | INPUT OIL SEAL | | |
| ♣20 | OUTPUT SHAFT - SINGLE | 42 | HEX HEAD CAP SCREW (flange to housing) | | |
| ♣21 | OUTPUT SHAFT - DOUBLE | 42 | HEX HEAD CAP SCREW (flange to housing) | | |
| 22 | GEAR SPACER | 43 | RETAINING RING - SHAFT | | |
| | | 43 | RETAINING RING - SHAFT | | |
| | | *44 | RETAINING RING - HOUSING | | |
| | | 45 | QUILL INPUT SHAFT | | |
| | | 46 | KEY - INPUT | | |
| | | 47 | HEX HEAD CAP SCREW (motor to flange) | | |
| | | HOLLOW OUTPUT SHAFT UNIT (H-STYLE) | | | |
| | | 51 | OUTPUT COVER | | |
| | | 52 | OUTPUT OIL SEAL | | |
| | | 53 | OUTPUT BEARING (53A. CONE, 53B. CUP) | | |
| | | 54 | GEAR SPACER | | |
| | | ♣55 | OUTPUT SHAFT | | |
| | | 56 | SETSCREW | | |
| | | 57 | GEAR KEY (only used on size 826 and larger units) | | |
| | | ♣58 | OUTPUT GEAR | | |
| | | 59 | OUTPUT KEY | | |
| | | LONG MOTOR FLANGE AND COUPLING KIT (BM-STYLE) | | | |
| | | 110 | "C" FACE MOTOR FLANGE | | |
| | | 42 | HEX HEAD CAP SCREW (flange to housing) | | |
| | | 112 | COUPLING KEY - REDUCER SHAFT | | |
| | | 113 | SETSCREW - REDUCER SHAFT | | |
| | | 114 | COUPLING GEAR - REDUCER SHAFT | | |
| | | 115 | COUPLING SLEEVE | | |
| | | 116 | SETSCREW - MOTOR SHAFT | | |
| | | 117 | COUPLING GEAR - MOTOR | | |



MODEL DM813-DM860
(Refer to Double Reduction
Basic Unit Components)



MODEL DMQ813-DMQ852
(Refer to Double Reduction
Basic Unit Components)

HOLLOW SHAFT MODELS
DH, DHM, DHMQ
(Refer to Double Reduction
Basic Unit Components)

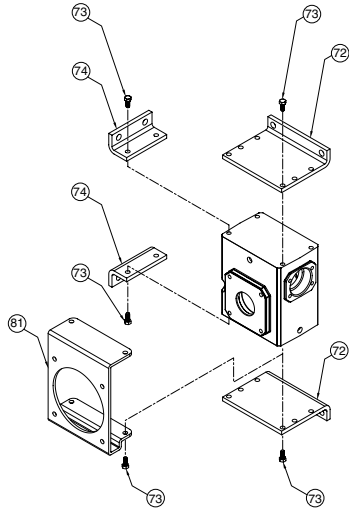


TECHNICAL INFORMATION

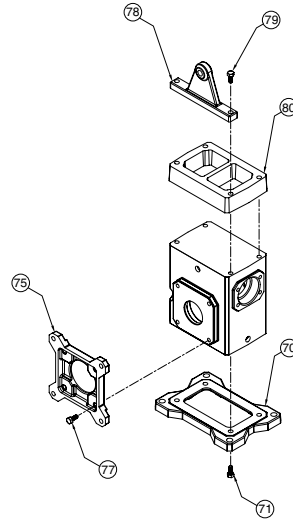


OHIO GEAR™

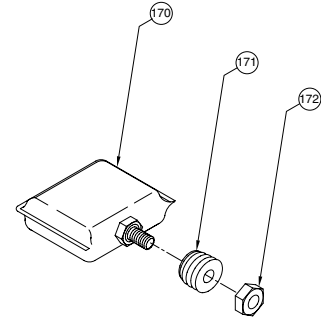
STEEL MOUNTING ACCESSORIES



CAST MOUNTING ACCESSORIES



ENVIROSEAL



MOUNTING BRACKET OPTIONS

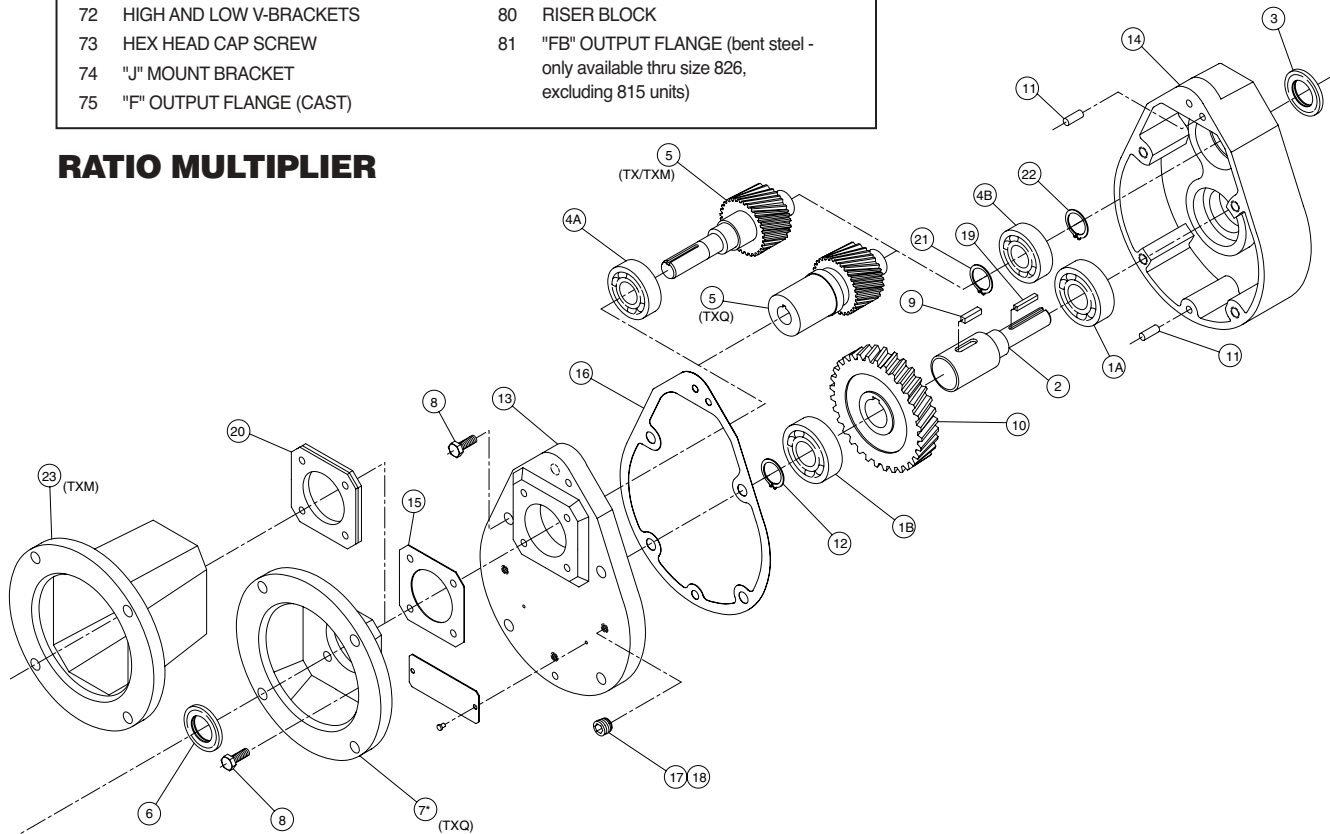
- 70 HORIZONTAL MOUNTING BASE
- 71 CAP SCREW
- 72 HIGH AND LOW V-BRACKETS
- 73 HEX HEAD CAP SCREW
- 74 "J" MOUNT BRACKET
- 75 "F" OUTPUT FLANGE (CAST)

- 77 HEX HEAD CAP SCREW
- 78 TORQUE BRACKET
- 79 HEX HEAD CAP SCREW
- 80 RISER BLOCK
- 81 "FB" OUTPUT FLANGE (bent steel - only available thru size 826, excluding 815 units)

INTERNAL PRESSURE COMPENSATION CHAMBER ASSEMBLY

- 170 INTERNAL PRESSURE COMPENSATION CHAMBER
- 171 INTERNAL PRESSURE COMPENSATION CHAMBER STEM PLUG
- 172 INTERNAL PRESSURE COMPENSATION CHAMBER STEM NUT

RATIO MULTIPLIER



DOUBLE REDUCTION UNIT (DMQ-STYLE)

ITEM # DESCRIPTION

- 1A BEARING, OUTPUT - EXTENSION END
- 1B BEARING, OUTPUT - INBOARD END
- 2 SHAFT, OUTPUT (state output frame size)
- 3 OIL SEAL, OUTPUT

- 4A BEARING, INPUT - EXTENSION END (n/a for TXQ)
- 4B BEARING, INPUT - INBOARD END
- 5 SHAFT, INPUT
- *7 FLANGE, MOTOR (TXQ only)
- 8 HEX HEAD CAP SCREW
- 9 KEY, GEAR

- 10 GEAR, OUTPUT
- 11 PIN, DOWEL
- 12 SPACER, LOW SPEED
- 13 COVER, HOUSING
- 14 HOUSING
- 15 GASKET, INPUT COVER
- 16 GASKET, HOUSING
- 17 PLUG, PIPE
- 18 PLUG, VENT

- 19 KEY, OUTPUT SHAFT
 - 20 COVER, INPUT, SEAL RETAINER
 - 21 RING, RETAINING, INTERNAL, INPUT SHAFT
 - 22 RING, RETAINING, EXTERNAL, INPUT SHAFT
 - 23 FLANGE, MOTOR (TXM only)
- *MOTOR FLANGE REPLACES INPUT COVER ON "TXQ" MODEL