

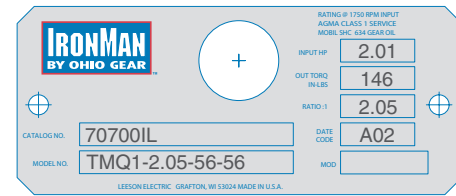


STOCK RATIO MULTIPLIER MODEL NUMBER SYSTEM



OHIO GEAR™

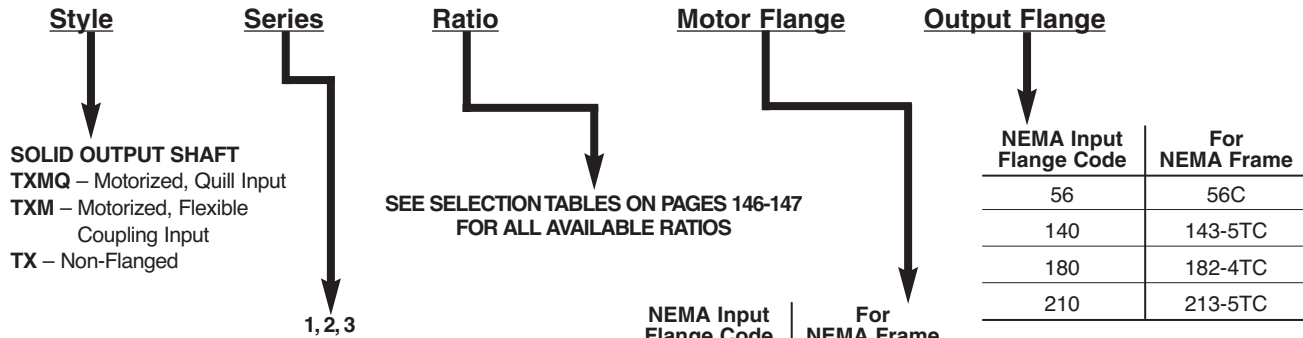
TYPICAL NAMEPLATE



LEESON 800 Series Gear Reducer Model Number Nomenclature

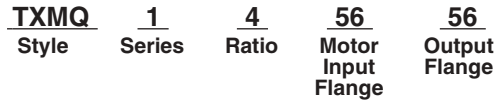
All stock and custom 800 series reducers are identified by a model number. The model number appears on the nameplate and describes pertinent features of the reducer. An example follows, along with a listing of the various letters and positions used.

NOTE: All ratio multipliers also have a catalog number—for example 707012L. Reducers and renewal parts should be ordered by catalog number. Accessories that are field installed will not be noted on the nameplate.



Sample Model Number

Motorized Quill Input Series 1; 4:1 Ratio, 5/8" Input Bore with NEMA 56C Flange, and 56C output flange.

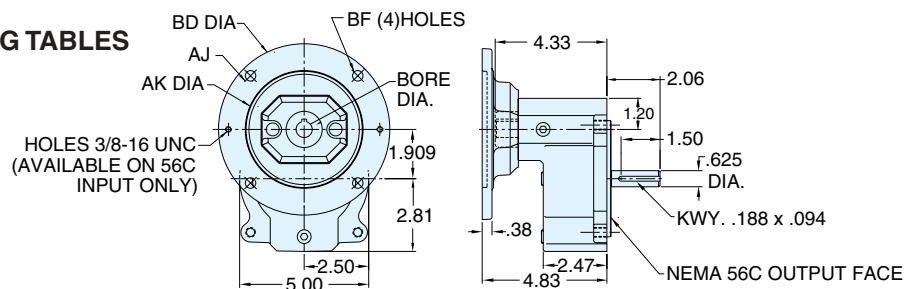


NEMA Input Flange Code	For NEMA Frame
48	48CZ
56	56C
140	143-5TC
180	182-4TC
210	213-5TC
250	254-6TC
N	Non-motorized input

RATIO MULTIPLIER

DIMENSIONS • MAXIMUM RATING TABLES

SERIES 1



SERIES 1 DIMENSIONS (Inches)

Style	Frame Combinations (Input - Output)	AJ	AK	BD	BF	Input Bore	Input Keyway*	Weight (lbs.)
TXMQ	48CZ - 56C	3.75	3.00	4.36	0.28	.500	1/8 X 1/16	19
	56C - 56C	5.88	4.50	6.64	0.41	.625	3/16 X 3/32	19

* Keyway width by depth

SERIES 1 • MAXIMUM RATINGS

Exact Ratio	Input R.P.M.	Output R.P.M.	Input H.P.	Output H.P.	Output TQ. (lb-in.)	Overhung Load (lbs.)
2.056	1750	851	2.01	1.97	146	222
2.929	1750	598	1.43	1.41	148	265
4.000	1750	438	1.20	1.18	170	300
5.111	1750	342	1.03	1.01	186	300
7.462	1750	235	0.75	0.73	196	300

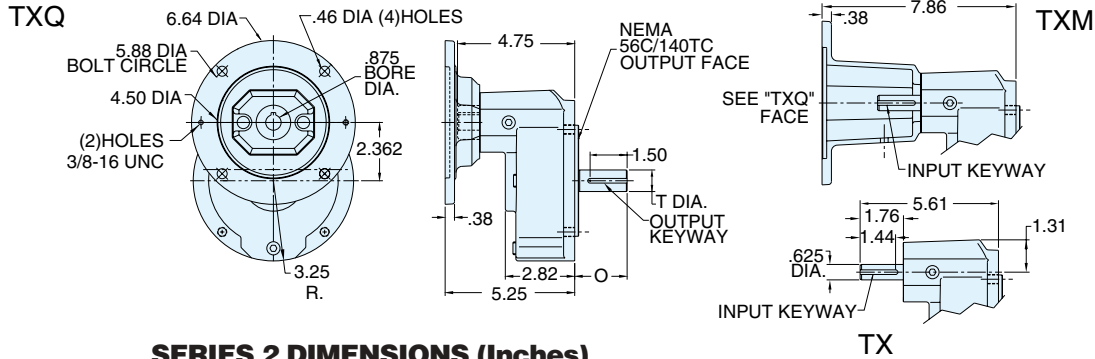


OHIO GEAR™

SERIES 2

RATIO MULTIPLIER

DIMENSIONS • MAXIMUM RATING TABLES



SERIES 2 DIMENSIONS (Inches)

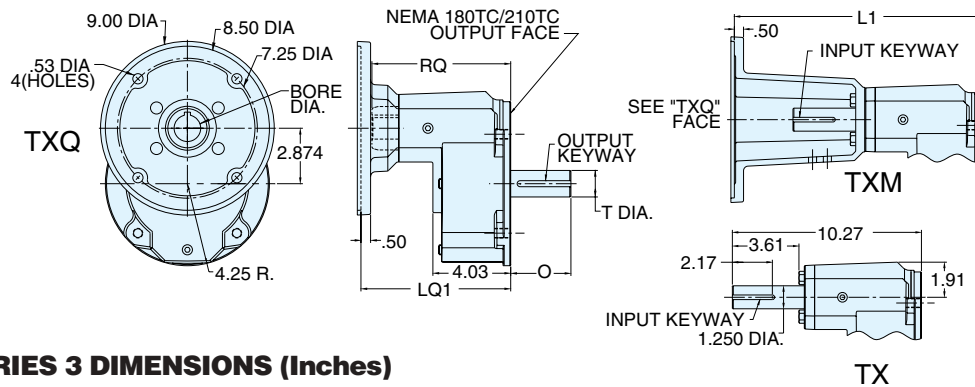
Style	Frame Combinations (Input - Output)	Input Keyway*	O	T +0.000 -0.0015	Output Keyway*	Weight (lbs.)
TXMQ, TXM, TX	140TC - 56C	.188 x .094	2.06	0.625	.188 x .094	22
	140TC - 140TC	.188 x .094	2.13	0.875	.188 x .094	22

* Keyway width by depth

SERIES 2 • MAXIMUM RATINGS

Exact Ratio	Input R.P.M.	Output R.P.M.	Input H.P.	Output H.P.	Output TQ. (lb-in.)	Overhung Load 56C Output (lbs.)	Overhung Load 140TC Output (lbs.)
2.000	1750	875	6.00	5.88	424	358	358
2.913	1750	601	4.21	4.13	433	375	434
4.000	1750	438	3.63	3.55	511	375	455
5.000	1750	350	3.00	2.94	529	375	455
7.182	1750	244	2.62	2.57	664	375	455

STYLE 3



SERIES 3 DIMENSIONS (Inches)

Style	Frame Combinations (Input - Output)	Input Bore	L1	LQ1	O	RQ	T +0.000 -0.0015	Input Keyway*	Output Keyway*	Weight (lbs.)
TXMQ, TXM, TX	180TC - 180TC	1.125	13.45	7.76	2.62	7.25	1.125	.250 x .125	.250 x .125 x 1.80	45
	210TC - 180TC	1.375	13.45	7.76	2.62	7.25	1.125	.312 x .156**	.250 x .125 x 1.80	45
	250TC - 180TC	1.625	14.01	8.32	2.62	7.65	1.125	.375 x .188**	.250 x .125 x 1.80	45
	180TC - 210TC	1.125	13.45	7.76	3.12	7.25	1.375	.250 x .125	.312 x .156 x 2.63	45
	210TC - 210TC	1.375	13.45	7.76	3.12	7.25	1.375	.312 x .156**	.312 x .156 x 2.63	45
	250TC - 210TC	1.625	14.01	8.32	3.12	7.65	1.375	.375 x .188**	.312 x .156 x 2.63	45

* Keyway width by depth

** Input keyway for styles TXM & TX is .250 x .125

SERIES 3 • MAXIMUM RATINGS

Exact Ratio	Input R.P.M.	Output R.P.M.	Input H.P.	Output H.P.	Output TQ. (lb-in.)	Overhung Load (lbs.)
2.000	1750	875	20.00	19.60	1412	900
2.964	1750	590	12.98	12.72	1357	900
4.045	1750	433	11.35	11.13	1621	900
5.167	1750	339	10.07	9.87	1836	900
7.538	1750	232	5.80	5.69	1544	900

Ratio Multipliers