

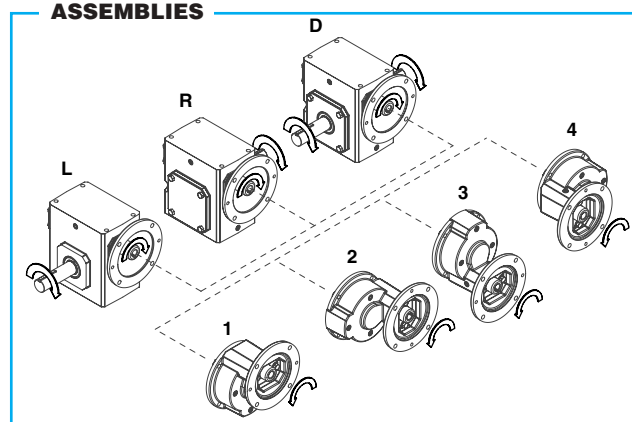
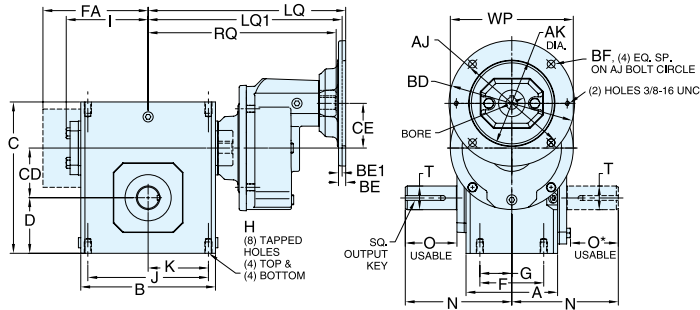


DOUBLE REDUCTION • HELICAL / WORM DIMENSIONS



OHIO GEAR™

STYLE DXMQ



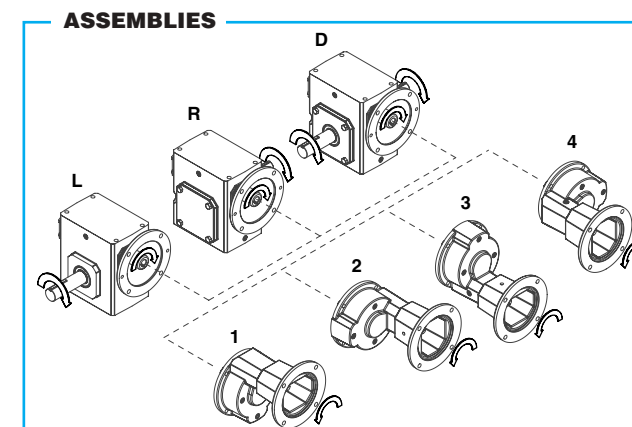
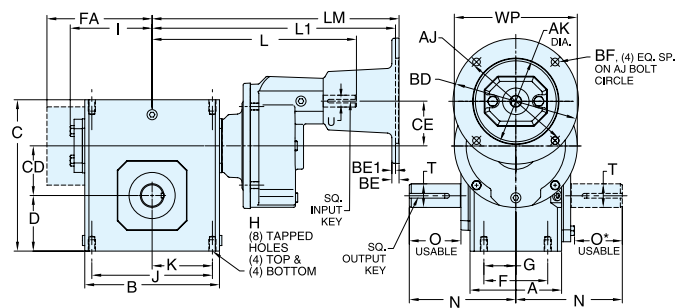
REVERSE ALL ARROWS FOR OPPOSITE INPUT SHAFT ROTATION. CONTACT FACTORY FOR OTHER MOUNTINGS OR ASSEMBLY POSITIONS.

STYLE DXMQ DIMENSIONS (Inches)

Series	A	B	C	CD	CE	D	F	G	H		I	J	K	N	O	O*	T +0.000 -0.0015	WP	Output Key
									Tap Size	Depth									
813	2.82	3.80	4.66	1.33	1.91	1.72	2.00	1.00	5/16-18	0.50	2.61	3.25	1.63	4.00	2.16	1.94	0.625	5.00	3/16 X 1.38
815	3.44	4.88	5.38	1.54	1.91	1.91	2.75	1.38	5/16-18	0.63	3.14	4.19	2.09	4.31	2.11	1.90	0.750	5.00	3/16 X 1.38
818	3.56	5.06	5.75	1.75	1.91	2.06	2.75	1.38	5/16-18	0.63	3.24	4.19	2.09	4.31	2.05	1.84	0.875	5.00	3/16 X 1.38
821	3.81	5.80	6.38	2.06	1.91	2.28	3.00	1.50	5/16-18	0.63	3.61	4.75	2.38	4.68	2.29	2.08	1.000	5.00	1/4 X 1.44
824	4.06	6.12	6.94	2.38	2.36	2.50	2.88	1.44	3/8-16	0.69	3.77	5.00	2.50	5.14	2.66	2.44	1.125	6.50	1/4 X 1.44
826	4.84	7.12	8.00	2.63	2.36	2.94	3.38	1.69	3/8-16	0.69	4.34	6.38	3.19	5.63	2.73	2.52	1.250	6.50	1/4 X 1.44
830	5.25	8.12	8.88	3.00	2.36	3.25	4.00	2.00	7/16-14	0.88	4.84	7.00	3.50	6.75	3.60	3.36	1.250	6.50	1/4 X 1.56
832	5.75	8.50	9.38	3.25	2.36	3.50	4.00	2.00	7/16-14	0.88	5.02	7.50	3.75	7.06	3.66	3.42	1.500	6.50	3/8 X 2.50
842	6.13	10.25	11.38	4.25	2.87	4.44	5.00	2.50	5/8-11	1.00	6.10	8.50	4.25	8.12	4.50	4.21	1.875	8.50	1/2 X 2.50
852	7.19	13.00	14.00	5.25	2.87	5.12	5.81	2.91	5/8-11	1.25	7.50	11.00	5.50	9.06	4.78	4.53	2.000	8.50	1/2 X 2.50
860**	8.13	14.25	16.50	6.00	2.87	6.50	6.38	3.19	5/8-11	1.00	N/A	12.75	6.38	10.00	4.65	4.65	2.500	8.50	5/8 X 4.00

Double Reduction Helical/Worm Gear Reducers

STYLE DXM



REVERSE ALL ARROWS FOR OPPOSITE INPUT SHAFT ROTATION. CONTACT FACTORY FOR OTHER MOUNTINGS OR ASSEMBLY POSITIONS.

STYLE DXM DIMENSIONS (Inches)

Series	A	B	C	CD	CE	D	F	G	H		I	J	K	L	N	O	O*	T +0.000 -0.0015	U +0.000 -0.0015	WP	Input Key	Output Key
									Tap Size	Depth												
824	4.06	6.12	6.94	2.38	2.32	2.50	2.88	1.44	3/8-16	0.69	3.77	5.00	2.50	10.24	5.14	2.66	2.44	1.125	0.625	6.50	3/16 X 1.63	1/4 X 1.44
826	4.84	7.12	8.00	2.63	2.36	2.94	3.38	1.69	3/8-16	0.69	4.34	6.38	3.19	10.80	5.63	2.73	2.52	1.250	0.625	6.50	3/16 X 1.63	1/4 X 1.44
830	5.25	8.12	8.88	3.00	2.36	3.25	4.00	2.00	7/16-14	0.88	4.84	7.00	3.50	11.30	6.75	3.60	3.36	1.250	0.625	6.50	3/16 X 1.63	1/4 X 1.56
832	5.75	8.50	9.38	3.25	2.36	3.50	4.00	2.00	7/16-14	0.88	5.02	7.50	3.75	11.49	7.06	3.66	3.42	1.500	0.625	6.50	3/16 X 1.63	3/8 X 2.50
842	6.13	10.25	11.38	4.25	2.87	4.44	5.00	2.50	5/8-11	1.00	6.10	8.50	4.25	16.72	8.12	4.50	4.21	1.875	1.250	8.50	1/4 X 2.50	1/2 X 2.50
852	7.19	13.00	14.00	5.25	2.87	5.12	5.81	2.91	5/8-11	1.25	7.50	11.00	5.50	18.12	9.06	4.78	4.53	2.000	1.250	8.50	1/4 X 3.00	1/2 X 2.50
860**	8.13	14.25	16.50	6.00	2.87	6.50	6.38	3.19	5/8-11	1.00	N/A	12.75	6.38	20.72	10.00	4.65	4.65	2.500	1.250	8.50	3/8 X 3.00	5/8 X 4.00

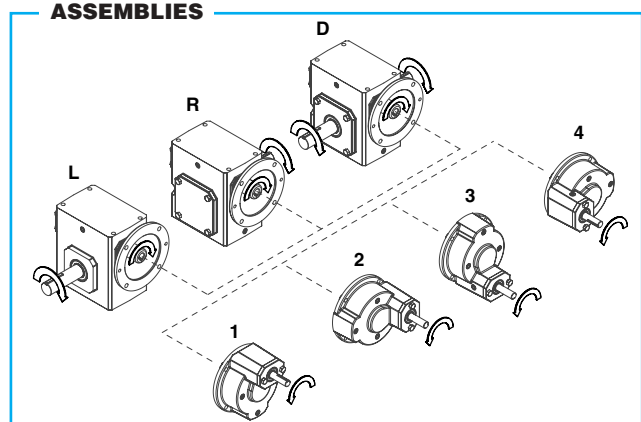
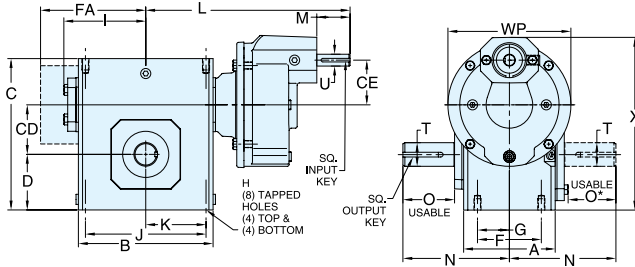


DOUBLE REDUCTION • HELICAL / WORM DIMENSIONS



OHIO GEAR™

STYLE DX



REVERSE ALL ARROWS FOR OPPOSITE INPUT SHAFT ROTATION. CONTACT FACTORY FOR OTHER MOUNTINGS OR ASSEMBLY POSITIONS.

STYLE DX DIMENSIONS (Inches)

Series	A	B	C	CD	CE	D	F	G	H		I	J	K	L	M	N	O	O*	T	U	WP	X	Input Key	Output Key
									Tap Size	Depth									+0.000 -0.0015	+0.000 -0.0015				
824	4.06	6.12	6.94	2.38	2.36	2.50	2.88	1.44	3/8-16	0.69	3.77	5.00	2.50	10.24	1.76	5.14	2.66	2.44	1.125	0.625	6.50	8.55	3/16 X 1.63	1/4 X 1.44
826	4.84	7.12	8.00	2.63	2.36	2.94	3.38	1.69	3/8-16	0.69	4.34	6.38	3.19	10.80	1.76	5.63	2.73	2.52	1.250	0.625	6.50	9.24	3/16 X 1.63	1/4 X 1.44
830	5.25	8.12	8.88	3.00	2.36	3.25	4.00	2.00	7/16-14	0.88	4.84	7.00	3.50	11.30	1.76	6.75	3.60	3.36	1.250	0.625	6.50	9.92	3/16 X 1.63	1/4 X 1.56
832	5.75	8.50	9.38	3.25	2.36	3.50	4.00	2.00	7/16-14	0.88	5.02	7.50	3.75	11.49	1.76	7.06	3.66	3.42	1.500	0.625	6.50	10.42	3/16 X 1.63	3/8 X 2.50
842	6.13	10.25	11.38	4.25	2.87	4.44	5.00	2.50	5/8-11	1.00	6.10	8.50	4.25	16.72	3.61	8.12	4.50	4.21	1.875	1.250	8.50	13.47	1/4 X 2.50	1/2 X 2.50
852	7.19	13.00	14.00	5.25	2.87	5.12	5.81	2.91	5/8-11	1.25	7.50	11.00	5.50	18.12	3.61	9.06	4.78	4.53	2.000	1.250	8.50	15.15	1/4 X 3.00	1/2 X 2.50
860**	8.13	14.25	16.50	6.00	2.87	6.50	6.38	3.19	5/8-11	1.00	N/A	12.75	6.38	20.72	3.61	10.00	4.65	4.65	2.500	1.250	8.50	17.28	3/8 X 3.00	5/8 X 4.00

Double Reduction Helical/Worm Gear Reducers

MOTOR MOUNTING DIMENSIONS

NEMA DIMENSIONS (Inches)

Series	LM 56C/ 140TC	180TC/ 210TC	250TC	LQ 48CZ/ 56C/140TC	180TC	LQ1 210TC	250TC	RQ			
								48CZ/ 56C/140TC	180TC	210TC	250TC
813	8.71	N/A	N/A	8.29	N/A	N/A	N/A	7.79	N/A	N/A	N/A
815	9.24	N/A	N/A	8.82	N/A	N/A	N/A	8.32	N/A	N/A	N/A
818	9.34	N/A	N/A	8.92	N/A	N/A	N/A	8.42	N/A	N/A	N/A
821	9.71	N/A	N/A	9.29	N/A	N/A	N/A	8.79	N/A	N/A	N/A
824	9.88	18.51	N/A	9.88*	12.82	N/A	N/A	9.38◆	12.31	N/A	N/A
826	10.44	19.07	N/A	10.44*	13.38	N/A	N/A	9.94◆	12.87	N/A	N/A
830	10.94	19.57	20.01	10.94*	13.88	14.32	N/A	10.44◆	13.37	13.81	N/A
832	11.13	19.76	20.20	11.13*	14.07	14.51	N/A	10.63◆	13.56	14.00	N/A
842	11.70	20.66	20.66	21.78	14.97	14.97	16.09	N/A	14.46	14.46	15.42
852	13.10	22.06	22.06	23.18	16.37	16.37	17.49	N/A	15.86	15.86	16.82
860	15.70	22.78	22.78	23.95	17.09	17.09	18.26	N/A	16.58	16.58	17.59

Frame	AJ	AK	BD	BE	BE1	Bore Dia.	Keyway▲	BF
48CZ	3.75	3.00	4.36	0.38	N/A	0.500	1/8 X 1/16	0.28
56C	5.88	4.50	6.64	0.38	N/A	0.625	3/16 X 3/32	0.41
140TC	5.88	4.50	6.64	0.38	N/A	0.875	3/16 X 3/32	0.41
180TC	7.25	8.50	9.00	N/A	0.50	1.125	1/4 X 1/8	0.53
210TC	7.25	8.50	9.00	N/A	0.50	1.375	5/16 X 5/32	0.53
250TC	7.25	8.50	9.00	N/A	0.50	1.625	3/8 X 3/16	0.53

IEC DIMENSIONS (Inches)◆

Series	D63D	D71D	D80D	LQ1			D132D	RQ					
				D90D	D100LD■	D100LD■		D63D	D71D	D80D	D90D	D100LD■	D132D
813	2.62	2.65	2.89	N/A	N/A	N/A	N/A	2.45	2.47	2.71	N/A	N/A	N/A
815	3.15	3.18	3.42	N/A	N/A	N/A	N/A	2.98	3.00	3.24	N/A	N/A	N/A
818	3.25	3.28	3.52	N/A	N/A	N/A	N/A	2.95	2.97	3.21	N/A	N/A	N/A
821	3.62	3.65	3.89	N/A	N/A	N/A	N/A	3.43	3.44	3.68	N/A	N/A	N/A
824	N/A	3.72	4.34	N/A	N/A	N/A	N/A	3.46	3.71	N/A	N/A	N/A	N/A
826	N/A	4.28	4.90	4.90	5.30	N/A	N/A	4.09	4.72	4.72	5.07	N/A	N/A
830	N/A	4.78	5.41	5.41	5.80	N/A	N/A	4.59	5.22	5.22	5.57	N/A	N/A
832	N/A	4.97	5.59	5.59	5.99	N/A	N/A	4.78	5.41	5.41	5.76	N/A	N/A
842	N/A	N/A	N/A	6.38	6.39	7.17	N/A	N/A	N/A	6.16	6.14	6.93	N/A
852	N/A	N/A	N/A	7.78	7.78	8.57	N/A	N/A	N/A	7.46	7.45	8.24	N/A

Frame●	AJ	AK	BD	BE	Bore Dia.	Keyway▲	BFTAP	OD
D63D	115	95	117	10	11	4 X 2	M8 X 1.25	131
D71D	130	110	132	11	14	5 X 2.5	M8 X 1.25	146
D80D	165	130	165	15	19	6 X 3	M10 X 1.50	184
D90D	165	130	165	15	24	8 X 3.5	M10 X 1.50	184
D100LD■	215	180	216	18	28	8 X 3.5	M12 X 1.75	237
D132D	265	230	267	18	38	10 X 4	M12 X 1.75	290

- * Applies to double output shaft
- ** Series 860 reducers are supplied with a fan. Dimension FA=11.13"
- ▲ Keyway width by depth
- ◆ Metric input flange options are available on quill input styles only.
- ◆ 48CZ not available
- Also applies to frame size D112MD
- Dimensions in millimeters (mm).

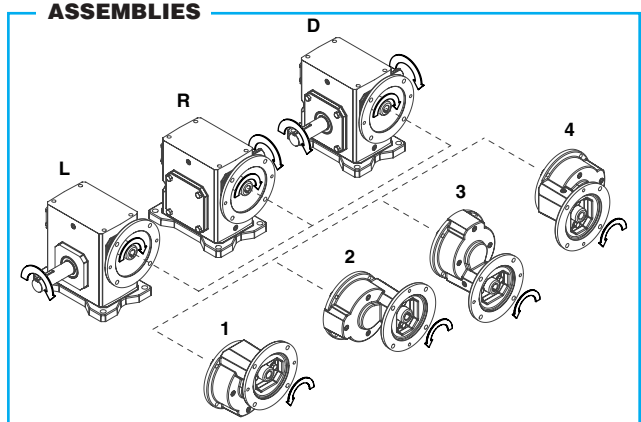
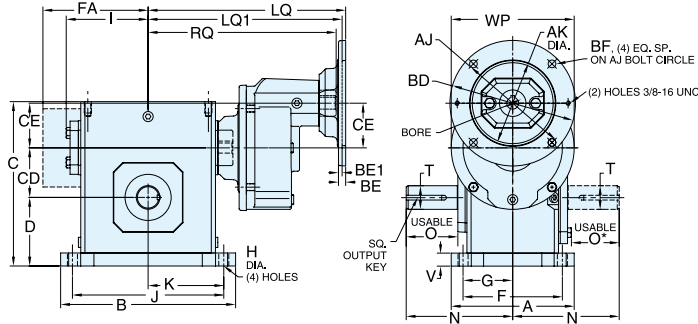


DOUBLE REDUCTION • HELICAL / WORM DIMENSIONS



OHIO GEAR™

STYLE DXTMQ



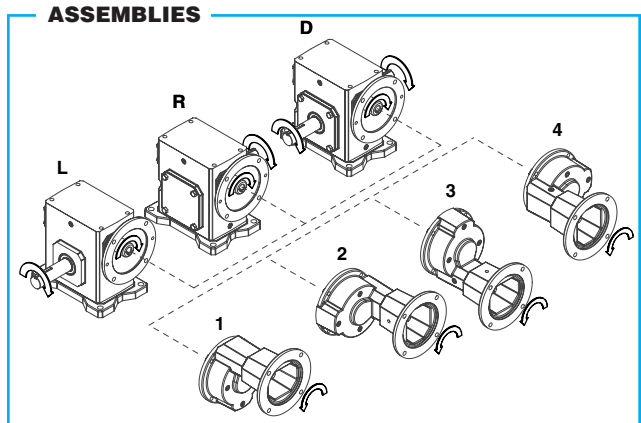
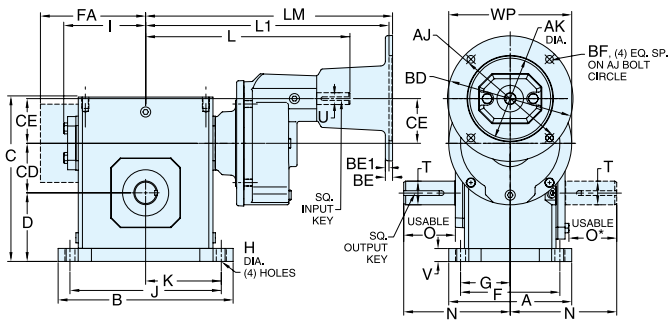
REVERSE ALL ARROWS FOR OPPOSITE INPUT SHAFT ROTATION. CONTACT FACTORY FOR OTHER MOUNTINGS OR ASSEMBLY POSITIONS.

STYLE DXTMQ DIMENSIONS (Inches)

Series	A	B	C	CD	CE	D	F	G	H	I	J	K	N	O	O*	T +0.000 -0.0015	V	WP	Output Key
813	5.38	5.37	5.19	1.33	1.91	2.25	3.31	1.66	0.34	2.61	4.37	2.19	4.00	2.16	1.94	0.625	0.53	5.00	3/16 X 1.38
815	5.56	6.50	5.97	1.54	1.91	2.50	4.31	2.16	0.41	3.14	5.25	2.63	4.31	2.11	1.90	0.750	0.59	5.00	3/16 X 1.38
818	5.75	6.99	6.44	1.75	1.91	2.75	4.50	2.25	0.41	3.24	5.75	2.88	4.31	2.05	1.84	0.875	0.69	5.00	3/16 X 1.38
821	6.00	7.69	7.09	2.06	1.91	3.00	4.69	2.30	0.47	3.61	6.38	3.19	4.68	2.29	2.08	1.000	0.72	5.00	1/4 X 1.44
824	6.19	8.37	7.69	2.38	2.36	3.25	4.88	2.44	0.47	3.77	7.06	3.53	5.14	2.66	2.44	1.125	0.75	6.50	1/4 X 1.44
826	6.50	9.25	8.75	2.63	2.36	3.69	5.25	2.63	0.53	4.34	8.00	4.00	5.63	2.73	2.52	1.250	0.75	6.50	1/4 X 1.44
830	7.50	10.00	9.63	3.00	2.36	4.00	5.88	2.94	0.53	4.84	8.44	4.22	6.75	3.60	3.36	1.250	0.75	6.50	1/4 X 1.56
832	7.75	11.12	10.25	3.25	2.36	4.38	6.13	3.06	0.53	5.02	9.50	4.75	7.06	3.66	3.42	1.500	0.88	6.50	3/8 X 2.50
842	9.75	13.24	12.38	4.25	2.87	5.44	7.63	3.81	0.66	6.10	11.12	5.56	8.12	4.50	4.21	1.875	1.00	8.50	1/2 X 2.50
852	10.50	16.24	15.13	5.25	2.87	6.25	8.38	4.19	0.78	7.50	14.12	7.06	9.06	4.78	4.53	2.000	1.13	8.50	1/2 X 2.50
860**	12.00	18.99	17.75	6.00	2.87	7.75	9.50	4.75	0.91	N/A	16.49	8.25	10.00	4.65	4.65	2.500	1.25	8.50	5/8 X 4.00

Double Reduction Helical/Worm Gear Reducers

STYLE DXTM



REVERSE ALL ARROWS FOR OPPOSITE INPUT SHAFT ROTATION. CONTACT FACTORY FOR OTHER MOUNTINGS OR ASSEMBLY POSITIONS.

STYLE DXTM DIMENSIONS (Inches)

Series	A	B	C	CD	CE	D	F	G	H	I	J	K	L	N	O	O*	T +0.000 -0.0015	U +0.000 -0.0015	V	WP	Input Key	Output Key
824	6.19	8.37	7.69	2.38	2.36	3.25	4.88	2.44	0.47	3.77	7.06	3.53	10.24	5.14	2.66	2.44	1.125	0.625	0.75	6.50	3/16 X 1.63	1/4 X 1.44
826	6.50	9.25	8.75	2.63	2.36	3.69	5.25	2.63	0.53	4.34	8.00	4.00	10.80	5.63	2.73	2.52	1.250	0.625	0.75	6.50	3/16 X 1.63	1/4 X 1.44
830	7.50	10.00	9.63	3.00	2.36	4.00	5.88	2.94	0.53	4.84	8.44	4.22	11.30	6.75	3.60	3.36	1.250	0.625	0.75	6.50	3/16 X 1.63	1/4 X 1.56
832	7.75	11.12	10.25	3.25	2.36	4.38	6.13	3.06	0.53	5.02	9.50	4.75	11.49	7.06	3.66	3.42	1.500	0.625	0.88	6.50	3/16 X 1.63	3/8 X 2.50
842	9.75	13.24	12.38	4.25	2.87	5.44	7.63	3.81	0.66	6.10	11.12	5.56	16.72	8.12	4.50	4.21	1.875	1.250	1.00	8.50	1/4 X 2.50	1/2 X 2.50
852	10.50	16.24	15.13	5.25	2.87	6.25	8.38	4.19	0.78	7.50	14.12	7.06	18.12	9.06	4.78	4.53	2.000	1.250	1.13	8.50	1/4 X 3.00	1/2 X 2.50
860**	12.00	18.99	17.75	6.00	2.87	7.75	9.50	4.75	0.91	N/A	16.49	8.25	20.72	10.00	4.65	4.65	2.500	1.250	1.25	8.50	3/8 X 3.00	5/8 X 4.00

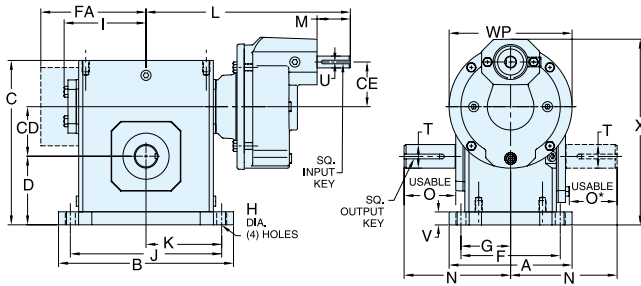


DOUBLE REDUCTION • HELICAL / WORM DIMENSIONS

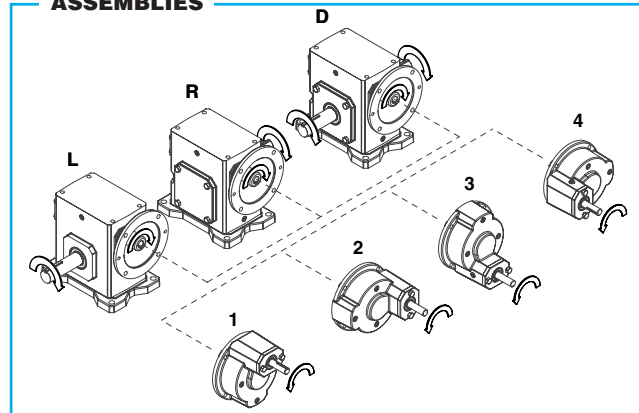


OHIO GEAR™

STYLE DXT



ASSEMBLIES



REVERSE ALL ARROWS FOR OPPOSITE INPUT SHAFT ROTATION. CONTACT FACTORY FOR OTHER MOUNTINGS OR ASSEMBLY POSITIONS.

STYLE DXT DIMENSIONS (Inches)

Series	A	B	C	CD	CE	D	F	G	H	I	J	K	L	M	N	O	O*	T +0.000 -0.0015	U +0.000 -0.0015	V	WP	X	Input Key	Output Key
824	6.19	8.37	7.69	2.38	2.36	3.25	4.88	2.44	0.47	3.77	7.06	3.53	10.24	1.76	5.14	2.66	2.44	1.125	0.625	0.75	6.50	8.55	3/16 X 1.63	1/4 X 1.44
826	6.50	9.25	8.75	2.63	2.36	3.69	5.25	2.63	0.53	4.34	8.00	4.00	10.80	1.76	5.63	2.73	2.52	1.250	0.625	0.75	6.50	9.24	3/16 X 1.63	1/4 X 1.44
830	7.50	10.00	9.63	3.00	2.36	4.00	5.88	2.94	0.53	4.84	8.44	4.22	11.30	1.76	6.75	3.60	3.36	1.250	0.625	0.75	6.50	9.92	3/16 X 1.63	1/4 X 1.56
832	7.75	11.12	10.25	3.25	2.36	4.38	6.13	3.06	0.53	5.02	9.50	4.75	11.49	1.76	7.06	3.66	3.42	1.500	0.625	0.88	6.50	10.42	3/16 X 1.63	3/8 X 2.50
842	9.75	13.24	12.38	4.25	2.87	5.44	7.63	3.81	0.66	6.10	11.12	5.56	16.72	3.61	8.12	4.50	4.21	1.875	1.250	1.00	8.50	13.47	1/4 X 2.50	1/2 X 2.50
852	10.50	16.24	15.13	5.25	2.87	6.25	8.38	4.19	0.78	7.50	14.12	7.06	18.12	3.61	9.06	4.78	4.53	2.000	1.250	1.13	8.50	15.15	1/4 X 3.00	1/2 X 2.50
860**	12.00	18.99	17.75	6.00	2.87	7.75	9.50	4.75	0.91	N/A	16.49	8.25	20.72	3.61	10.00	4.65	4.65	2.500	1.250	1.25	8.50	17.28	3/8 X 3.00	5/8 X 4.00

Double Reduction Helical/Worm Gear Reducers

MOTOR MOUNTING DIMENSIONS

NEMA DIMENSIONS (Inches)

Series	LM 56C/ 140TC	L1			LQ 48CZ/ 56C/140TC	LQ1			RQ			
		180TC/	210TC	250TC		180TC	210TC	250TC	180TC	210TC	250TC	
813	8.71	N/A	N/A	N/A	8.29	N/A	N/A	N/A	7.79	N/A	N/A	N/A
815	9.24	N/A	N/A	N/A	8.82	N/A	N/A	N/A	8.32	N/A	N/A	N/A
818	9.34	N/A	N/A	N/A	8.92	N/A	N/A	N/A	8.42	N/A	N/A	N/A
821	9.71	N/A	N/A	N/A	9.29	N/A	N/A	N/A	8.79	N/A	N/A	N/A
824	9.88	18.51	N/A	N/A	9.88*	12.82	N/A	N/A	9.38♦	12.31	N/A	N/A
826	10.44	19.07	N/A	N/A	10.44*	13.38	N/A	N/A	9.94♦	12.87	N/A	N/A
830	10.94	19.57	20.01	N/A	10.94*	13.88	14.32	N/A	10.44♦	13.37	13.81	N/A
832	11.13	19.76	20.20	N/A	11.13*	14.07	14.51	N/A	10.63♦	13.56	14.00	N/A
842	11.70	20.66	20.66	21.78	N/A	14.97	14.97	16.09	N/A	14.46	14.46	15.42
852	13.10	22.06	22.06	23.18	N/A	16.37	16.37	17.49	N/A	15.86	15.86	16.82
860	15.70	22.78	22.78	23.95	N/A	17.09	17.09	18.26	N/A	16.58	16.58	17.59

Frame	AJ	AK	BD	BE	BE1	Bore Dia.	Keyway▲	BF
48CZ	3.75	3.00	4.36	0.38	N/A	0.500	1/8 X 1/16	0.28
56C	5.88	4.50	6.64	0.38	N/A	0.625	3/16 X 3/32	0.41
140TC	5.88	4.50	6.64	0.38	N/A	0.875	3/16 X 3/32	0.41
180TC	7.25	8.50	9.00	N/A	0.50	1.125	1/4 X 1/8	0.53
210TC	7.25	8.50	9.00	N/A	0.50	1.375	5/16 X 5/32	0.53
250TC	7.25	8.50	9.00	N/A	0.50	1.625	3/8 X 3/16	0.53

IEC DIMENSIONS (Inches)❖

Series	LQ1						RQ					
	D63D	D71D	D80D	D90D	D100LD■	D132D	D63D	D71D	D80D	D90D	D100LD■	D132D
813	2.62	2.65	2.89	N/A	N/A	N/A	2.45	2.47	2.71	N/A	N/A	N/A
815	3.15	3.18	3.42	N/A	N/A	N/A	2.98	3.00	3.24	N/A	N/A	N/A
818	3.25	3.28	3.52	N/A	N/A	N/A	2.95	2.97	3.21	N/A	N/A	N/A
821	3.62	3.65	3.89	N/A	N/A	N/A	3.43	3.44	3.68	N/A	N/A	N/A
824	N/A	3.72	4.34	N/A	N/A	N/A	N/A	3.46	3.71	N/A	N/A	N/A
826	N/A	4.28	4.90	4.90	5.30	N/A	N/A	4.09	4.72	4.72	5.07	N/A
830	N/A	4.78	5.41	5.41	5.80	N/A	N/A	4.59	5.22	5.22	5.57	N/A
832	N/A	4.97	5.59	5.59	5.99	N/A	N/A	4.78	5.41	5.41	5.76	N/A
842	N/A	N/A	N/A	6.38	6.39	7.17	N/A	N/A	N/A	6.16	6.14	6.93
852	N/A	N/A	N/A	7.78	7.78	8.57	N/A	N/A	N/A	7.46	7.45	8.24

Frame●	AJ	AK	BD	BE	Bore Dia.	Keyway▲	BF TAP	OD
D63D	115	95	117	10	11	4 X 2	M8 X 1.25	131
D71D	130	110	132	11	14	5 X 2.5	M8 X 1.25	146
D80D	165	130	165	15	19	6 X 3	M10 X 1.50	184
D90D	165	130	165	15	24	8 X 3.5	M10 X 1.50	184
D100LD■	215	180	216	18	28	8 X 3.5	M12 X 1.75	237
D132D	265	230	267	18	38	10 X 4	M12 X 1.75	290

* Applies to double output shaft

** Series 860 reducers are supplied with a fan. Dimension FA=11.13".

▲ Keyway width by depth

❖ Metric input flange options are available on quill input styles only.

♦ 48CZ not available

■ Also applies to frame size D112MD

● Dimensions in millimeters (mm).