



**Gearmotors**

**Gear Reducers**

**Motors**

**GROVE GEAR**

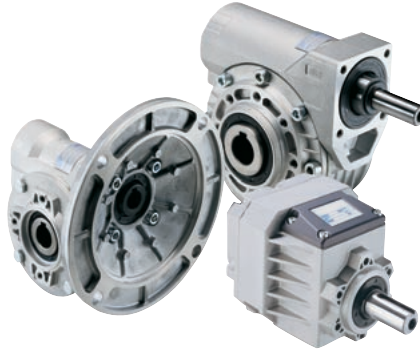
*Driven to be the Best*

# Premium Gear



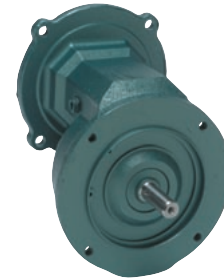
## Series 200 Flexaline™ and O.E. Series™ Worm Gear Speed Reducers

- 14 sizes available with input horsepower ratings up to 104HP.
- Available in single, double and triple reduction with ratios from 5:1 to 216,000:1. Helical worm ratios from 25:1 to 600:1.
- Non-compressible metal shims maintain factory settings and gear alignment throughout product life.
- Unique quill seal guard protects against input seal damage during motor installation.
- O.E. Series™ features compact narrow designs to fit new or existing space allocations.



## Lightning™ Aluminum Speed Reducers

- Five sizes available of worm gear reducers with input horsepower ratings up to 7.5HP and in ratios from 7:1 to 70:1.
- Four sizes available of in-line gear reducers with input horsepower ratings up to 15hp and in ratios from 3.5:1 to 280:1.
- Fits into small spaces. Up to one third smaller than other brands.
- Sealed for life, never change or add oil!
- OEM design for lightweight requirements.



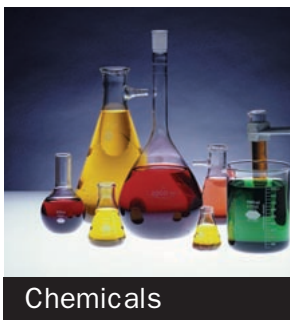
## Ratio Multipliers

- Three sizes available with input horsepower ratings up to 20HP.
- Available in single reduction with ratios from 2:1 to 7.5:1.
- High efficiency design using helical gearing. The ideal solution to solve high speed problems.
- Units come with factory installed lubrication and are 100% run and leak tested.

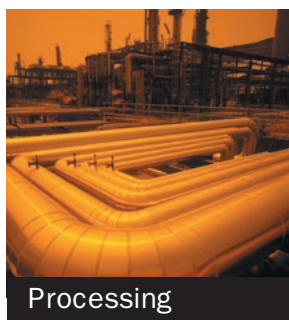
# Quality

*Superior Design and Precision Manufacturing*

## A Multitude of Applications



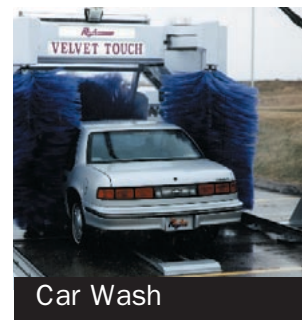
Chemicals



Processing



Meat



Car Wash

**GROVE GEAR**

# Reducers, Motors and



## TorqueLine™ Helical Bevel Gearmotors and Reducers

- Five sizes available in reducer and gearmotor designs with input horsepower ratings up to 53HP.
- Available in triple and quintuple reduction with ratios from 6.2:1 to 3400:1.
- Double-lip spring loaded seals provide increased life and resistance to high temperatures, abrasion and chemicals.
- Precision carburized and hardened spiral bevel gearing and crowned helical gearing combine to give you quiet, efficient, right angle speed reduction.



## TorqueLine™ Helical Worm Gearmotors and Reducers

- Four sizes available in reducer and gearmotor designs with input horsepower ratings up to 17HP.
- Available in double, triple and quadruple reduction with ratios from 7:1 to 3400:1.
- Units arrive from the factory already filled to the proper level with the right lubricant.
- Efficiency of helical gearing with the simplicity of worm design.



## TorqueLine™ Helical Concentric Gearmotors and Reducers

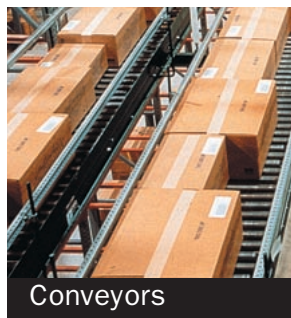
- Six sizes available in reducer and gearmotor designs with input horsepower ratings up to 104HP.
- Available in double, triple and quadruple reduction with ratios from 2.2:1 to 3700:1.
- Oversized bearings together with an oversized steel output shaft provide superior overhung load and high ratings.

# Interchangeability

*Replace all major brands with Grove Gear*



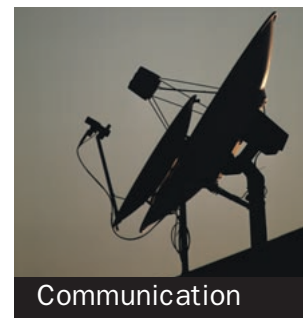
Food Processing



Conveyors



Specialty Lifts



Communication

**GROVE GEAR**

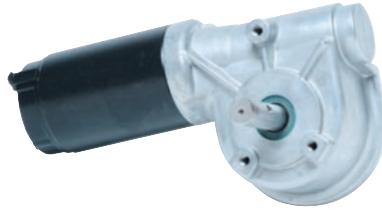
# Gearmotors



## Stainless Steel Gear Drives

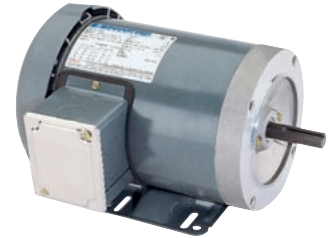
- Six sizes available with input horsepower ratings up to 17HP.
- Available in single and double reduction with ratios from 5:1 to 3600:1.
- All 316 stainless steel exterior includes cast stainless steel housing, seals, shims, nameplate, hardware and shafts.
- Internal compensating system keeps pressure down, oil in the box and contaminants out.
- Worms are cut, heat-treated, ground, and polished to provide efficient, quiet operation.

## Package Solutions From Grove Gear



## Custom Motorized Gear Reducers Solutions

- Grove Gear can provide the whole package—not just gearboxes!
- Unmatched manufacturing facilities provide low cost solutions for your gearing needs.
- From inexpensive designs to elaborate transmissions, miniature gearmotors to gearboxes rated for hundreds of horsepower, Grove Gear can solve your toughest transmission needs.
- From design, to manufacturing, to testing and documentation, quality is assured at Grove Gear.



## Performance-Matched Motors

- Through partnerships with other REGAL-BELOIT CORPORATION divisions, Grove Gear can provide Lincoln Motors™, LEESON Electric™ or Marathon Electric™ motors to meet any application requirements.
- Performance-matched motors with TorqueLine™ reducers provide quiet, efficient and low cost speed reduction.
- Best variable speed products in the industry—from simple inverter duty and vector duty motors to permanent magnet DC motors.

# Reliability

*Trust Grove Gear for years of trouble-free service*



Petroleum



Dairy



Medical



Bottling

**GROVE GEAR**

# Driven to be the Best



## A Team Dedicated to Customer Satisfaction

The entire GROVE GEAR team is committed to providing superior customer service and engineering support, exceptional design, manufacturing quality, competitive pricing and one of the best lead times in the industry.

Our focus on

quality combined with our state-of-the-art machinery, software, quality assurance systems and testing equipment has positioned us as a leading solutions provider in today's fast-paced industrial environment.

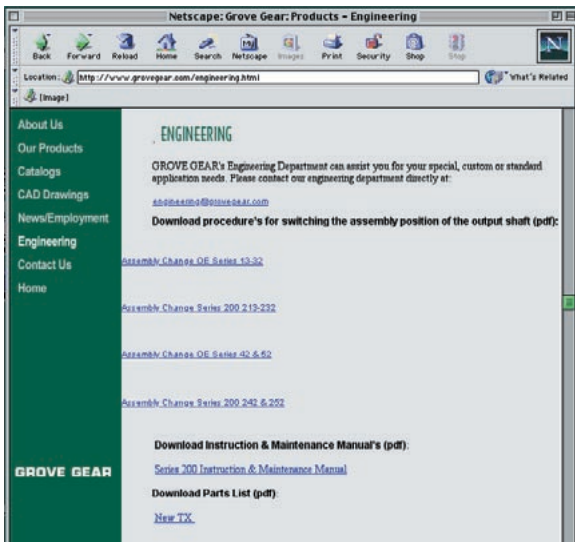


## Engineering Support is Just a Click Away

[www.grovegear.com/engineering](http://www.grovegear.com/engineering)

Download:

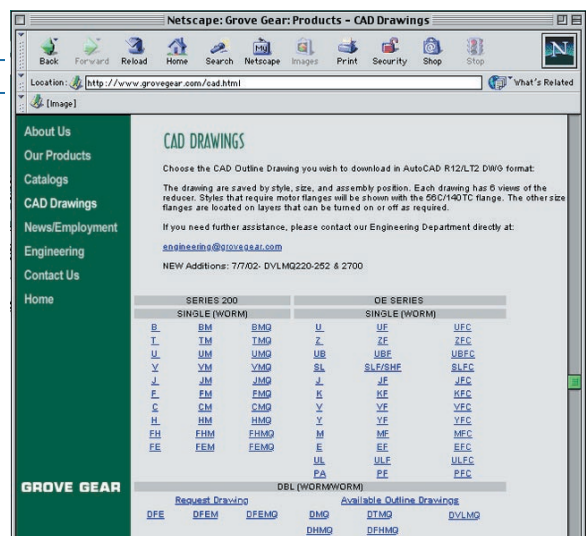
- Assembly change procedures
- Instruction manuals
- Maintenance manuals
- Parts list



## [www.grovegear.com/cad](http://www.grovegear.com/cad)

Download drawings for most every GROVE GEAR product:

- Provided in the AutoCad R12/LT2 DWG format.
- Sorted by style, size and assembly position with 6 views of the reducer.



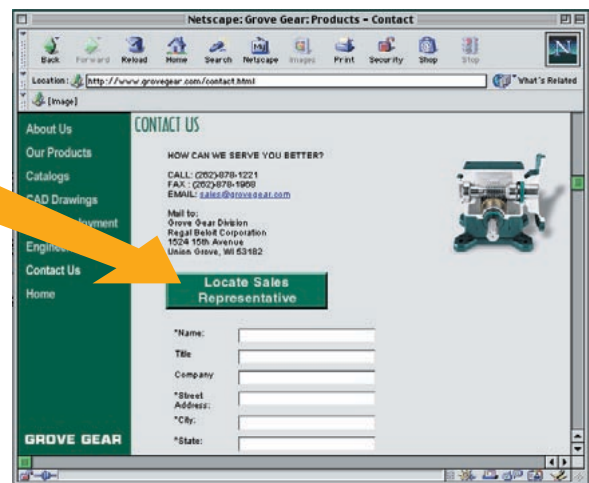
# Assembly Distribution Centers Strategically Positioned To Serve You



## Contact Information

With Internet access you can locate a local GROVE GEAR field salesperson by visiting:

**[www.groovegear.com/contact](http://www.groovegear.com/contact)**



1524 15th Avenue • Union Grove, WI 53182  
Call 262-878-1221 • Fax 262-878-1968

**GROVE GEAR**  
A REGAL-BELOIT Company

**[www.groovegear.com](http://www.groovegear.com) • [sales@groovegear.com](mailto:sales@groovegear.com)**