

[Industry Solutions](#)[Product Information](#)[Customer Support](#)[Partners & Affiliates](#)[Contact Us](#)[Home](#) -> [Industry Solutions](#) -> [Application Stories](#) ->[\[Search\]](#)

Think & Do Featured Applications

Semiconductor Fab Application

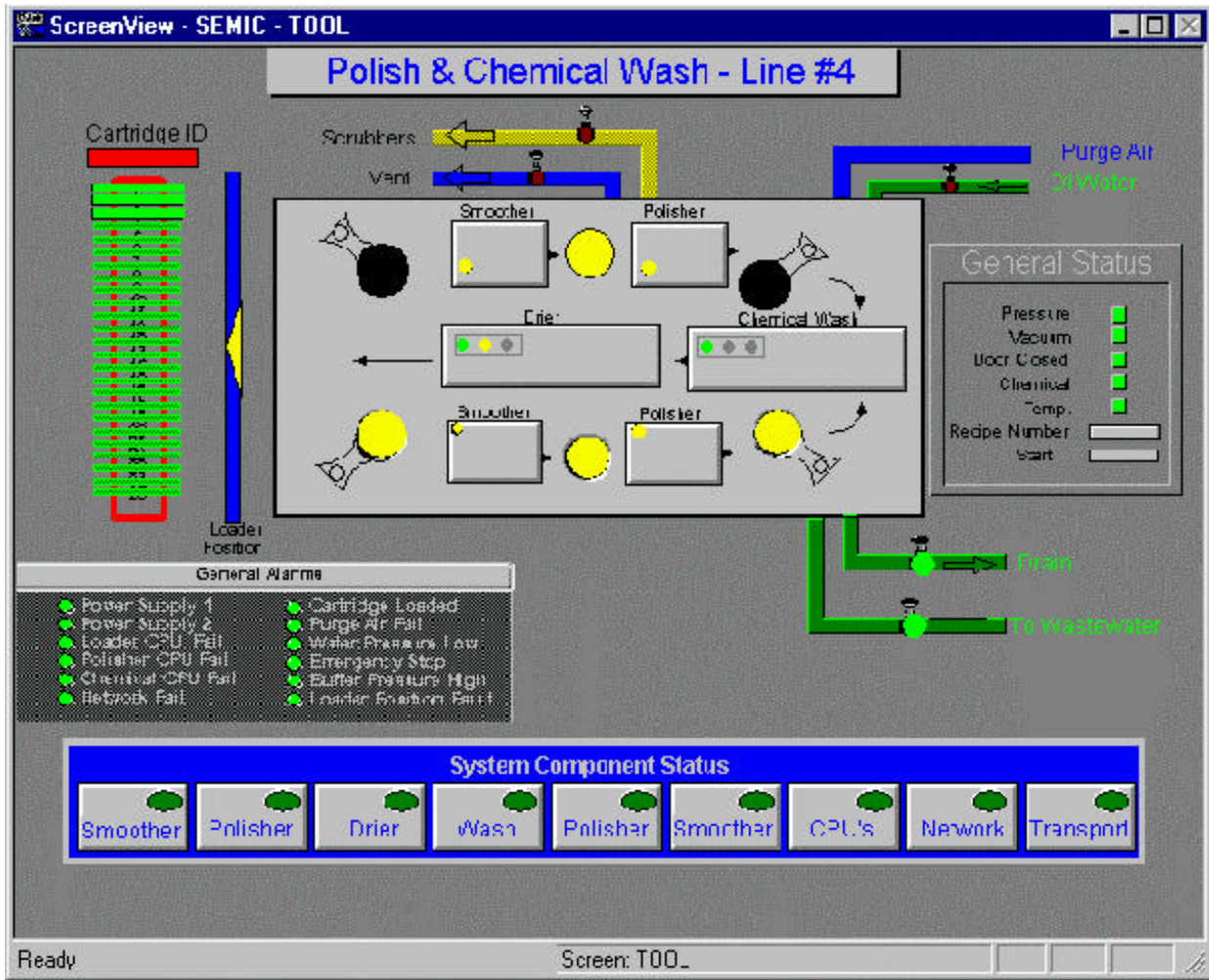
Semiconductor fab application controls can be quickly programmed with easy to learn, fun to use Think & Do flowchart logic. The control logic can be broken down into many separate flowcharts to ease programming and maintenance. Plant personnel can readily analyze and debug production operations using the Think & Do graphical debugging tools, including EasyTrac, a revolutionary control logic analyzer that actually lets you watch your flowcharts run in real time! To give you even more power to see what's going on in your application, Think & Do software allows you to single-step through your program by individual block, flowchart or scan.

Fab Line Control

Think & Do Software can be used for high-level monitoring and control of the various processes used in wafer fab operations. Operator displays can provide information on the status of various production stations or cluster tools as well as information on the auxiliary processes such as DI water, plant air, boilers and scrubbers. Production data and status information, such as yields, production rates and reject conditions, can be displayed, logged, or even transferred to other Windows packages, such as Excel or Access, for further analysis.

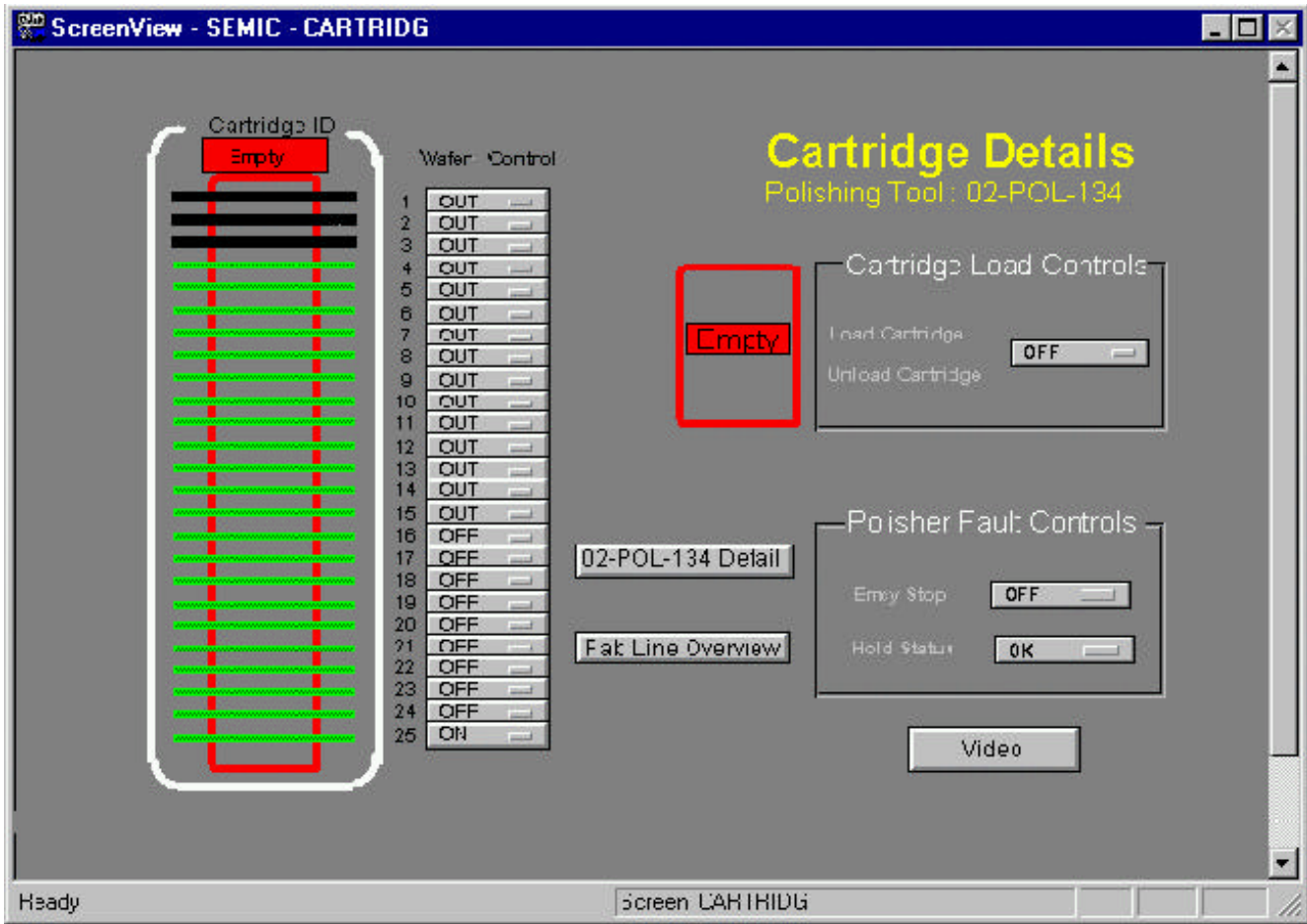
Polish and Chemical Wash Station

Control of Polish and Chemical Wash Stations in a fab line is a typical application for Think & Do Software. In the application shown here, the operator screen allows operators to quickly check production alarms and device status. In addition, this particular application allows the operator to easily review and change the station recipe parameters with the push of a button.



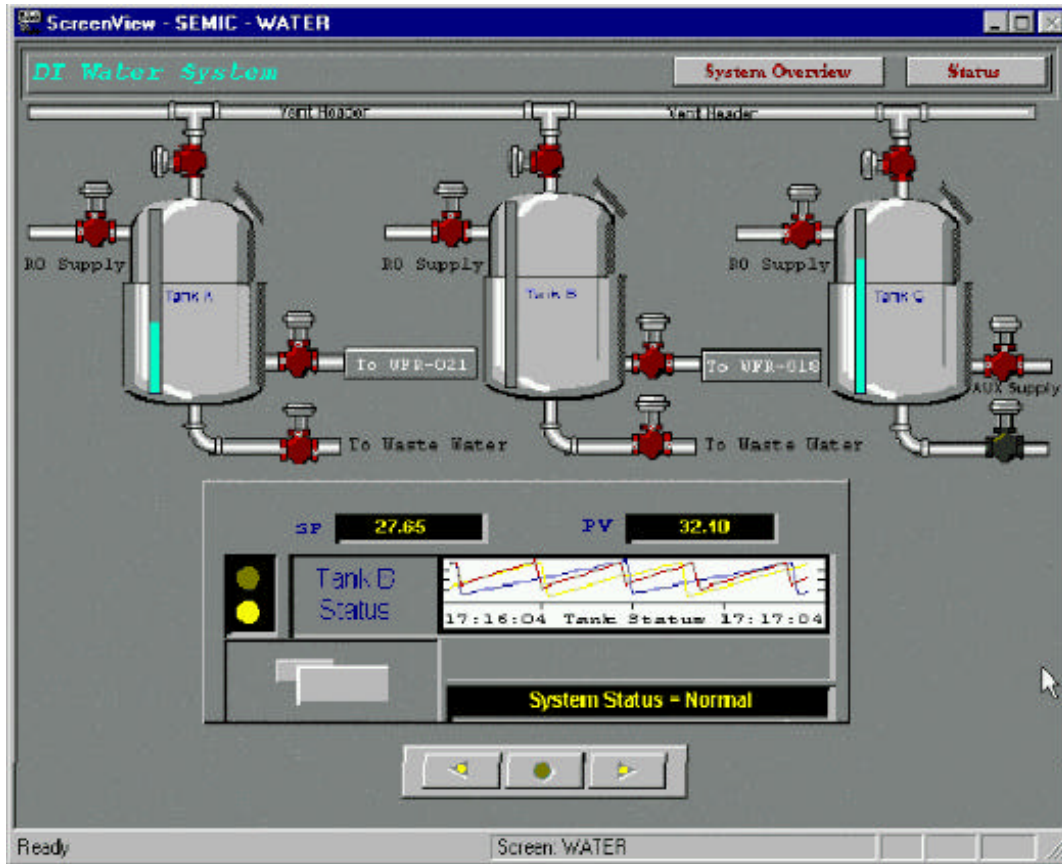
An alarm panel provides a high-level view of general alarm conditions while a separate status panel covers overall operating information. Through touch-screen buttons along the bottom of the screen the operator also has immediate access to detailed information about different processing stations in the line.

The status of one of the polishing stations is shown in the following operator display. Screen animation indicates the loading and unloading status of a cartridge holding up to 25 wafers. The material handling of the cartridge is easily controlled and monitored through Think & Do Software flowcharts.



Auxiliary Systems Control

With built-in PID control loops, Think & Do Software can also be used to control a wide range of auxiliary systems supporting semiconductor fab operations, including gas cabinets and DI water systems. With Think & Do HMI screens, system operators can monitor (and if necessary control) pumps and valves and other equipment associated with the process. Loop parameters such as setpoint, process variable and output can be displayed, trended and changed under password control. Tuning parameters can also become part of the recipe or production parameters and adjusted automatically by the flowchart logic. In this particular system, screen navigation is accomplished with mouse controls located below the trend chart panel. Buttons are provided to move to the next screen, the previous screen and to return to the main screen.



More Think & Do Software Application Stories

Here are some more **Think & Do Software** Application Stories you may find interesting:

- [Think & Do - Batch Processing of Starch Slurry](#)
- [Application Stories - Tray Filling with Vision Inspection](#)
- [Application Stories - Inspection with X-Y Motion and Vision](#)
- [Application Stories - Semiconductor Material Handling](#)
- [Application Stories - Semiconductor Fab Application](#)
- [Application Stories - Sorting and Conveyor Application](#)
- [Application Stories - Railroad Classification Yard](#)
- [Application Stories - Flexible Spring Manufacturing Machine](#)
- [Application Stories - Transfer Line Station with RF Tag Reader](#)
- [Application Stories - Packaging with Vision Inspection](#)
- [Application Stories - A "Cool" Application](#)
- [Application Stories - Waste Water Treatment](#)
- [Application Stories - Video Cassette Packaging](#)
- [Application Stories - Chemical Processing Control](#)
- [Application Stories - Corrugated Box Application](#)
- [Application Stories - Hadley Design - Robot Pharmacy](#)
Also as PDF

Do **YOU** have a **Think & Do Software** Application that you think is something special? [Tell us about it!](#)

[\[Home\]](#) [\[Industry Solutions\]](#) [\[Product Information\]](#) [\[Customer Support\]](#) [\[Partners & Affiliates\]](#) [\[Contact Think & Do\]](#)
[\[Sitemap/Search\]](#)